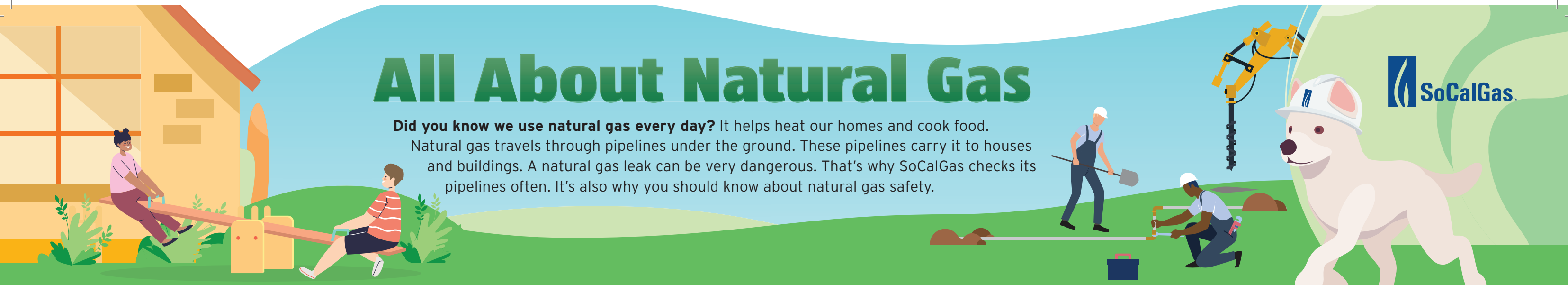


All About Natural Gas

Did you know we use natural gas every day? It helps heat our homes and cook food. Natural gas travels through pipelines under the ground. These pipelines carry it to houses and buildings. A natural gas leak can be very dangerous. That's why SoCalGas checks its pipelines often. It's also why you should know about natural gas safety.



811 Makes Safety Fun

An adult should always contact 811 at least two business days before you start a digging project. They can go online at california811.org, or dial 811. Workers will come place flags where there are pipes and wires underneath. But what do the flags mean? Each type of underground line has its own color. **Unscramble the letters to learn what each color means. Then color the flags. And remember! Leave the flags in place until you're done digging!**



Electric lines
DRE



Natural gas, oil or steam
EWOYLL



Communications
RANOGE



Water
LBEU



Reclaimed water
RPLEPU



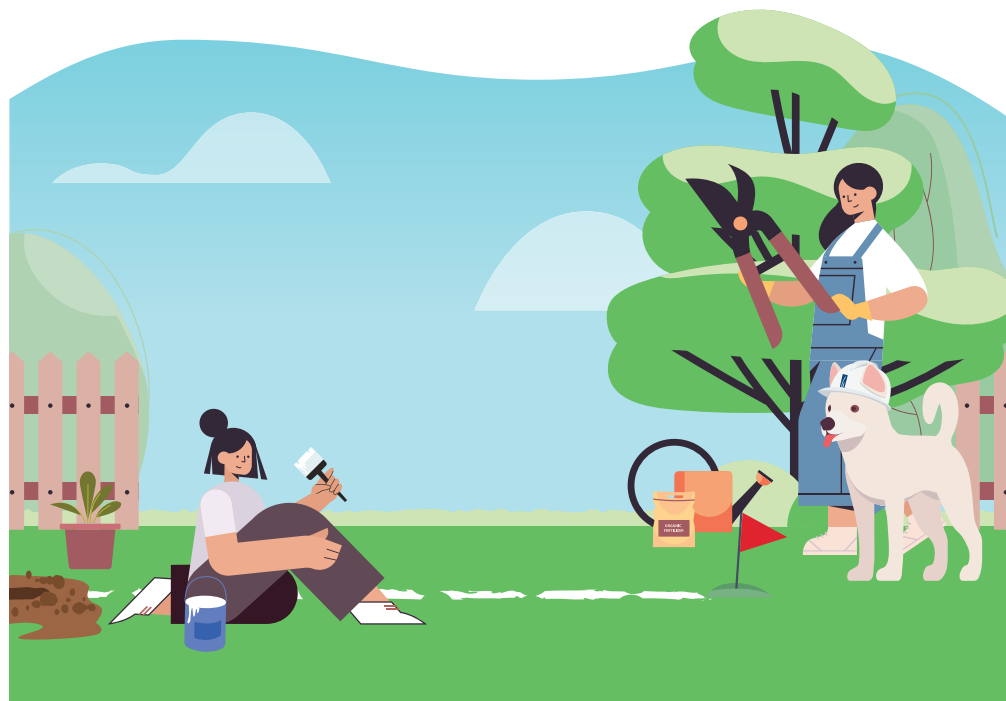
Sewer
EENGR



Temporary markings
IKNP

Find the Differences

The family in the pictures contacted 811 so they could plant a garden. These pictures don't match. **Find the 10 differences and circle them.**



How to Dig Safely

Safe digging starts with 811, but it doesn't end there. Once the flags are in place, you need to choose the right tool. Large machines can accidentally hit a natural gas pipe if you dig too close to a flag. Within 24 inches of a flag, only use smaller hand tools. **There are three large machines and three hand tools hidden in these pages. See if you can find them all!**

Signs of a Natural Gas Leak

It's important to get away from a natural gas leak quickly. To do that, you need to recognize the signs. Fill in the blanks using the words in the word bank to learn how.

Look with your _____. A natural gas leak can cause dirt or _____ to blow into the air. Dead or dying plants, _____ or weeds near a natural gas meter or pipeline may also be a sign.

Use your ears. Natural gas leaks can make unusual _____. They may sound like a hiss or _____. Strange _____ coming from things that use natural gas - like a _____ - could be a sign of a leak.

Use your nose. Natural _____ has a distinctive smell, but you may not always smell it. Sometimes other smells cover it up, or the odor may fade. A stuffy _____ can also make it hard to smell.

Word Bank

- EYES
- GAS
- GRASS
- NOISES
- NOSE
- SOUNDS
- STOVE
- WATER
- WHISTLE

To Call or Not to Call?

Look at each picture and decide whether there may be signs of a natural gas leak that need to be reported. If there are, circle "Yes." If not, circle "No." Even if you're not sure, you should always ask an adult to report a possible natural gas leak to help you stay safe.



YES

NO



YES

NO



YES

NO



Learn more at [socalgas.com/safety](https://www.socalgas.com/safety)