

SED-265
SS-25 Well Sketch
I.19-06-016
ALJs: Hecht/Poirier
Date Served: May 3, 2021

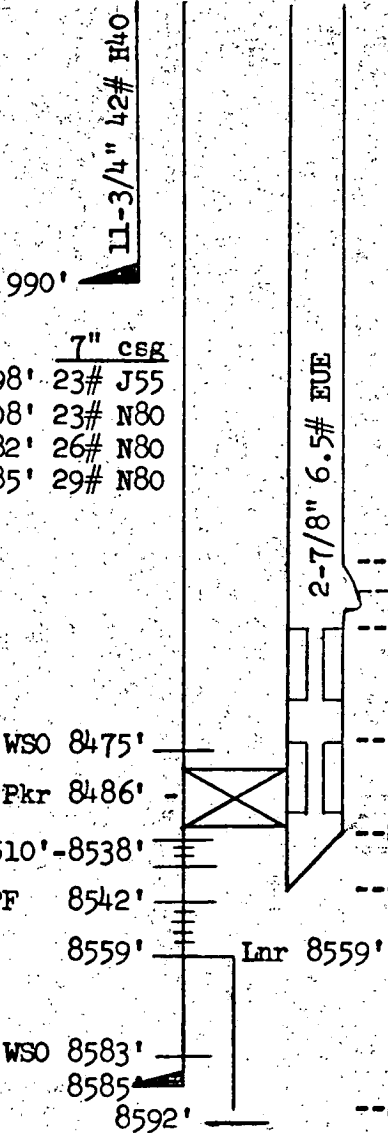
Elevation: 827"
 DF: 6'

Standard Sesnon 25

Surface choke: _____

Casing flow string

10/1/53 - Well spud
 2/25/54 - Well completed
 893' of 4-1/2" drill pipe +
 Johnston tester side tracked -
 old TD 4948' plugged back 3860'
 5/24/73 - 6/6/73 Cleaned out
 to 8748', pressure tested csg,
 perforated for conversion to
 gas storage, ran tbg with gas
 lift valves
 6/25/76 - 7/9/76 Cleaned out
 to 8748', ran tbg with SSSV
 2/16/79-2/20/79 Replaced
 safety system



2-7/8" 6.5# EUE

7" CSF

- 0-2398' 23# J55
- 6308' 23# N80
- 8282' 26# N80
- 8585' 29# N80

- (8327')(-5400')
- 8397' MMG
- 8451' Camco 2 1/2" SSSV
(8451') 2.313" ID
- 8472' Otis "XN" 2.205" ID
(8472')
- 8487'
- 8496'
- 8583' WSO
- 8585' WSO
- 8590' (8590')

- WSO 8475'
- Pkr 8486'
- 8510'-8538'
- 4-1/2" JSPF 8542'
- 8559'
- WSO 8583'
- 8585'

Lnr 8559'

5-1/2" 20# J55 FJ 120 mesh

8749' TD 8748'
 (SS - 5822')

NOTE: Unable to use lower nipple - use M-lock for SSSV nipple. See wireline tickets.

WELL VOLUME

	Cu.Ft.	Bbl.
Tubing	276	49
Csg/Lnr.	37	7
Annulus	1469	262

6/12/84