

SED-274

Estimated Well Conditions (as of 11-10-15)

I.19-06-016

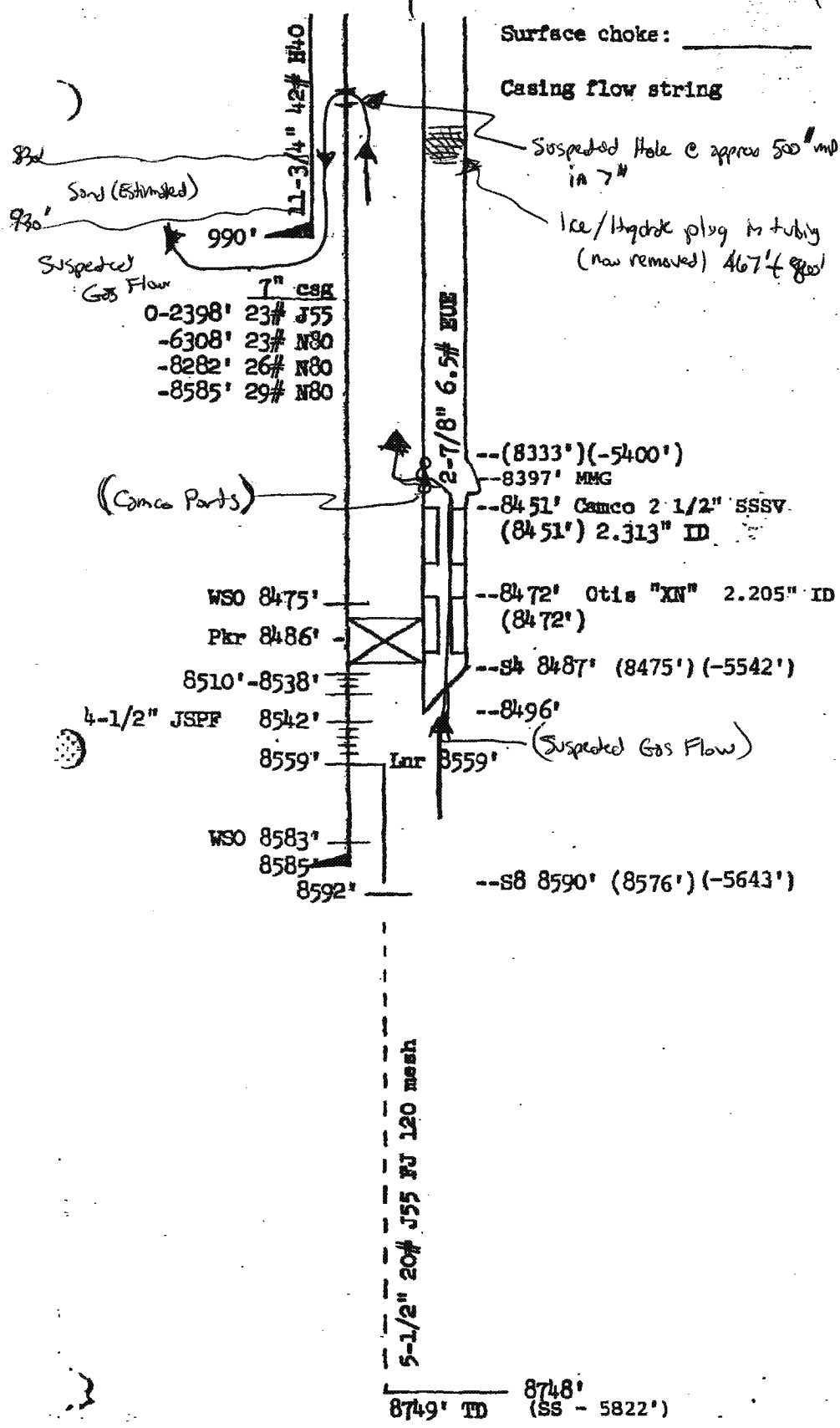
ALJs: Hecht/Poirier

Date Served: May 3, 2021

ESTIMATED WELL CONDITIONS (As of 11-10-15)

Elevation: 2927" G.L.
DF: 6'

Standard Season 25



10/1/53 - Well spud
2/25/54 - Well completed
893' of 4-1/2" drill pipe + Johnston tester side tracked - old TD 4948' plugged back 3860'
5/24/73 - 6/6/73 Cleaned out to 8748', pressure tested csg, perforated for conversion to gas storage, ran tbg with gas lift valves.
6/25/76 - 7/9/76 Cleaned out to 8748', ran tbg with SSSV
2/16/79-2/20/79 Replaced safety system

NOTE: Unable to use lower nipple - use M-lock for SSSV nipple. See wire-line tickets.

WELL VOLUME

	Cu.Ft.	Bbl.
Tubing	276	49
Csg/Lnr.	37	7
Annulus	1469	262

6-16-86