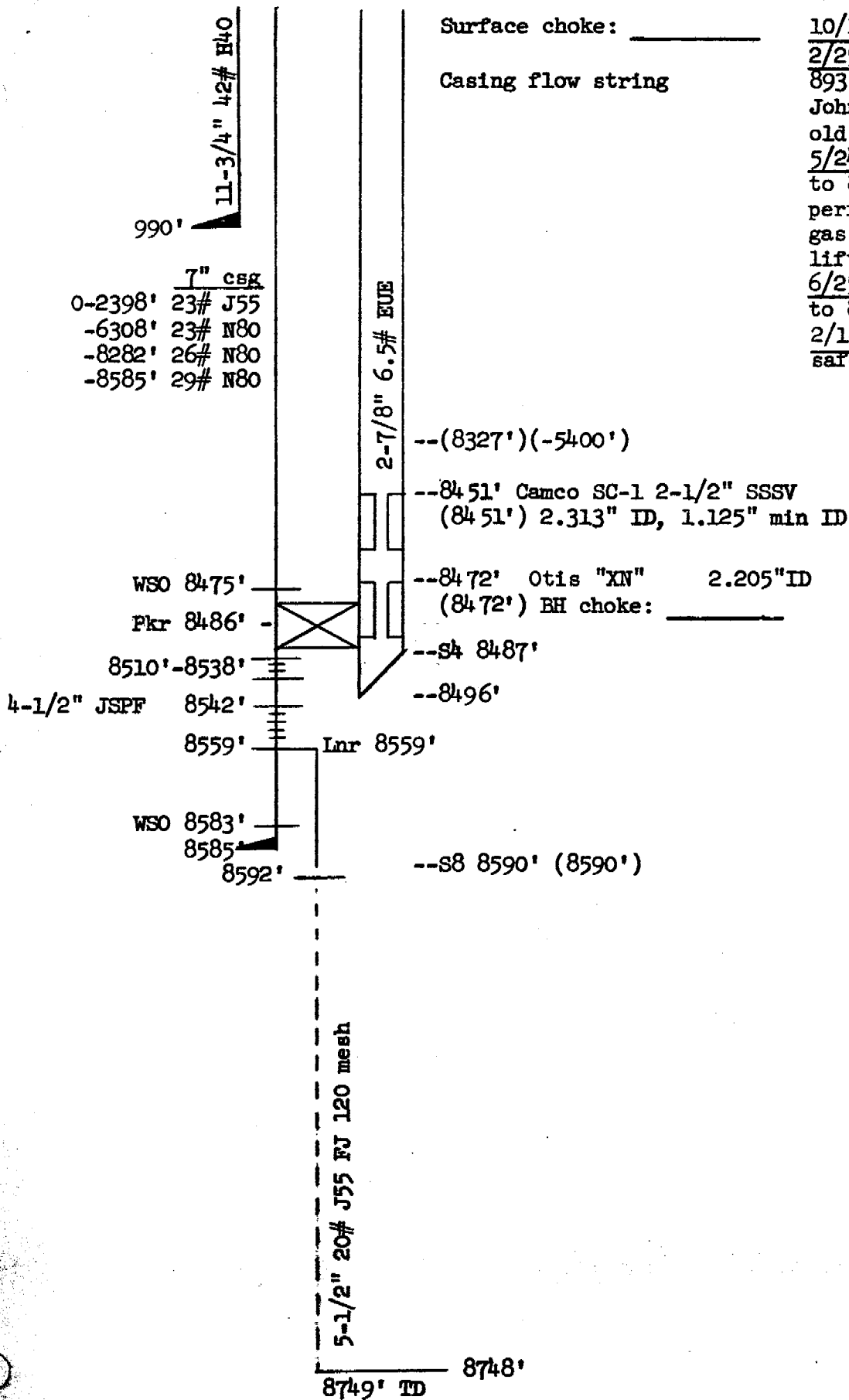


SED-298
1979 SS-25 Well Sketch
I.19-06-016
ALJs: Hecht/Poirier
Date Served: May 4, 2021

Elevation: 2997"
DF: 6'

Standard Sesnon 25



Surface choke: _____

Casing flow string

10/1/53 - Well spud
 2/25/54 - Well completed
 893' of 4-1/2" drill pipe + Johnston tester side tracked - old TD 4948' plugged back 3860'
 5/24/73 - 6/6/73 Cleaned out to 8748', pressure tested csg, perforated for conversion to gas storage, ran tbg with gas lift valves
 6/25/76 - 7/9/76 Cleaned out to 8748', ran tbg with SSSV
 2/16/79-2/20/79 Replaced safety system

7" csg
 0-2398' 23# J55
 -6308' 23# N80
 -8282' 26# N80
 -8585' 29# N80

2-7/8" 6.5# EUE

--(8327')(-5400')

--8451' Camco SC-1 2-1/2" SSSV
(8451') 2.313" ID, 1.125" min ID

WSO 8475'
 Pkr 8486' -
 --8472' Otis "XN" 2.205" ID
 (8472') BH choke: _____

8510'-8538' ---8487'

4-1/2" JSPF 8542' ---8496'

8559' Lnr 8559'

WSO 8583'
 8585'
 8592' ---s8 8590' (8590')

5-1/2" 20# J55 FJ 120 mesh

8749' TD 8748'