



Sid Newsom
Tariff Manager
Rates, Revenues & Tariffs

555 W. Fifth Street, GT14D6
Los Angeles, CA 90013
Tel: 213.244.2846
Fax: 213.244.4957
SNewsom@semprautilities.com

October 15, 2009

Mr. Honesto Gatchalian
Energy Division
California Public Utilities Commission
505 Van Ness Avenue
San Francisco, CA 94102

Re: Gas Market OIR Report on Receipt Point Utilization of SDG&E and SoCalGas

Dear Mr. Gatchalian:

As required by Ordering Paragraph 4 of Decision (D.) 06-09-039, Southern California Gas Company (SoCalGas) and San Diego Gas & Electric Company (SDG&E) hereby file the attached report that: describes the historical utilization of receipt points; requests for expansion of receipt points; and describes actions currently underway regarding the expansion of receipt points.

Ordering Paragraph No. 4 of D.06-09-039 stated:

SoCalGas shall monitor the use of the receipt points on its backbone system and provide semi-annual reports to the Commission showing the extent to which shippers are (or are not) seeking access at levels above available capacity. In addition, it is required to explain, in each report, why the company should or should not pursue receipt point expansion in response to existing or forecast constraints. In addition to filing these reports at the Commission, SoCalGas shall serve copies of the reports on any parties to this proceeding requesting service.

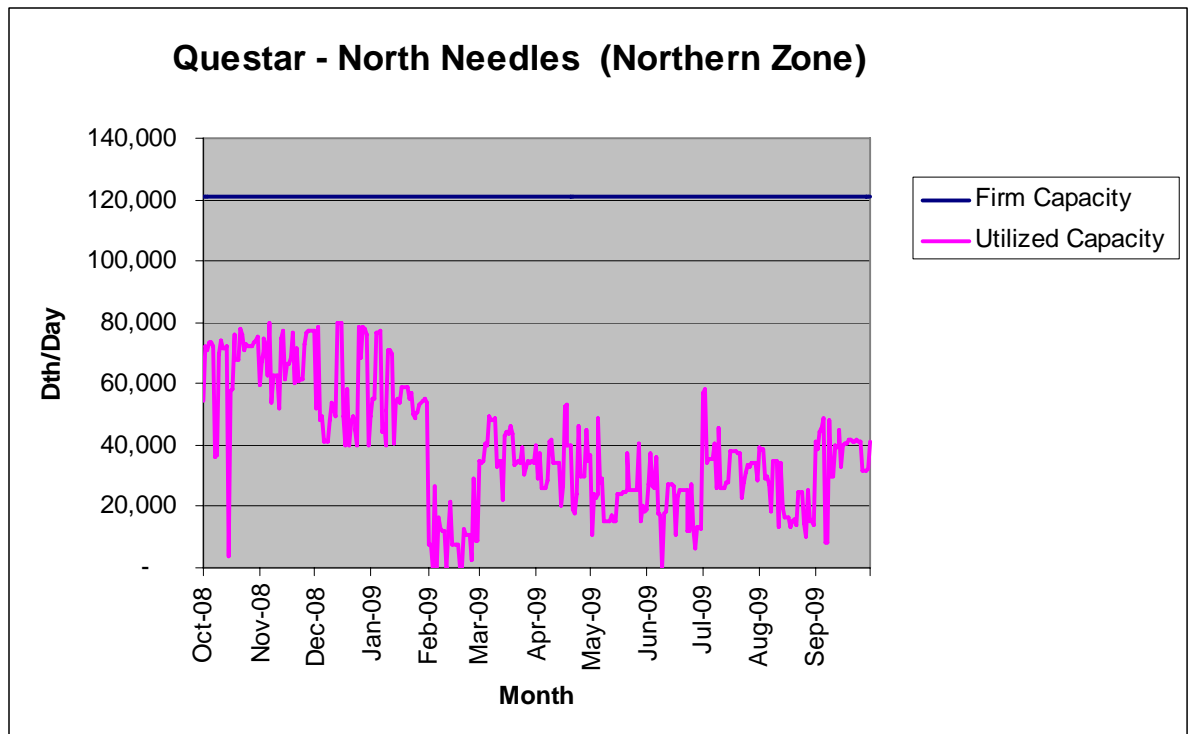
Historical Usage

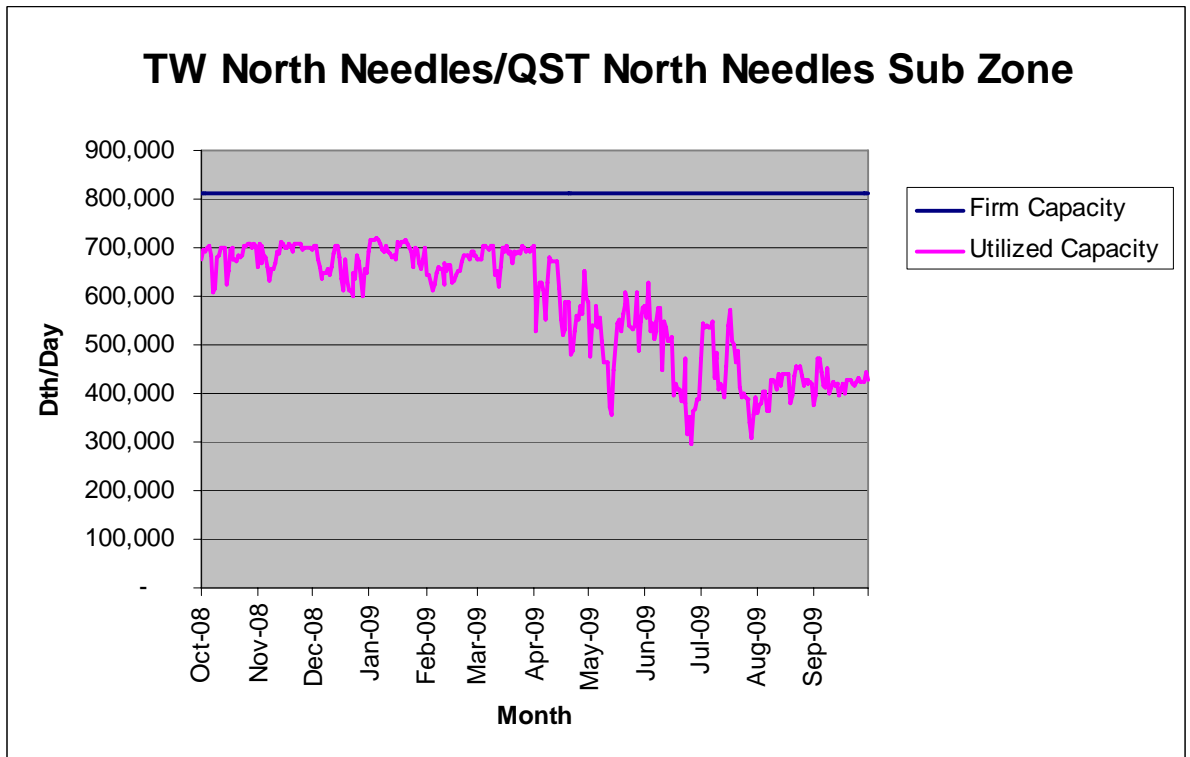
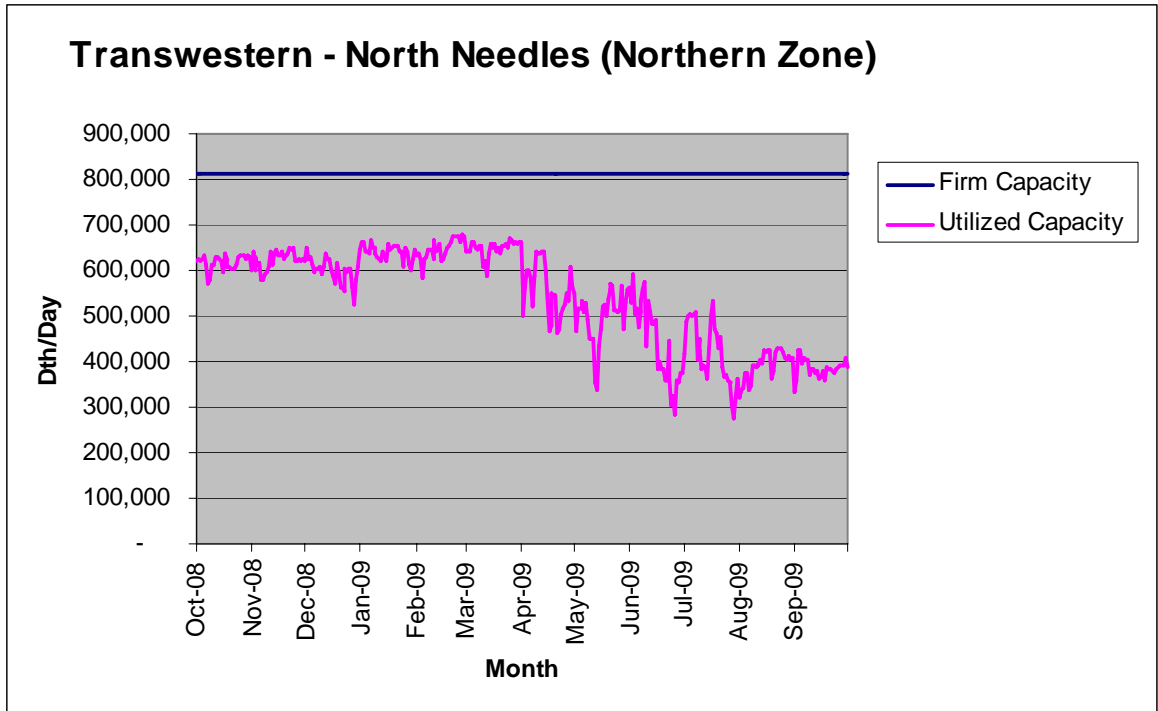
The historical usage (October 2008 – September 2009) of the SDG&E/SoCalGas receipt points has shown that none of the points has been fully utilized throughout the year. SDG&E/SoCalGas have evaluated the stated Annual Firm Receipt Point Capacity and the Annual Firm Transmission Zone Capacity as compared to the daily Scheduled Quantities to determine the utilization of each receipt point. The Firm

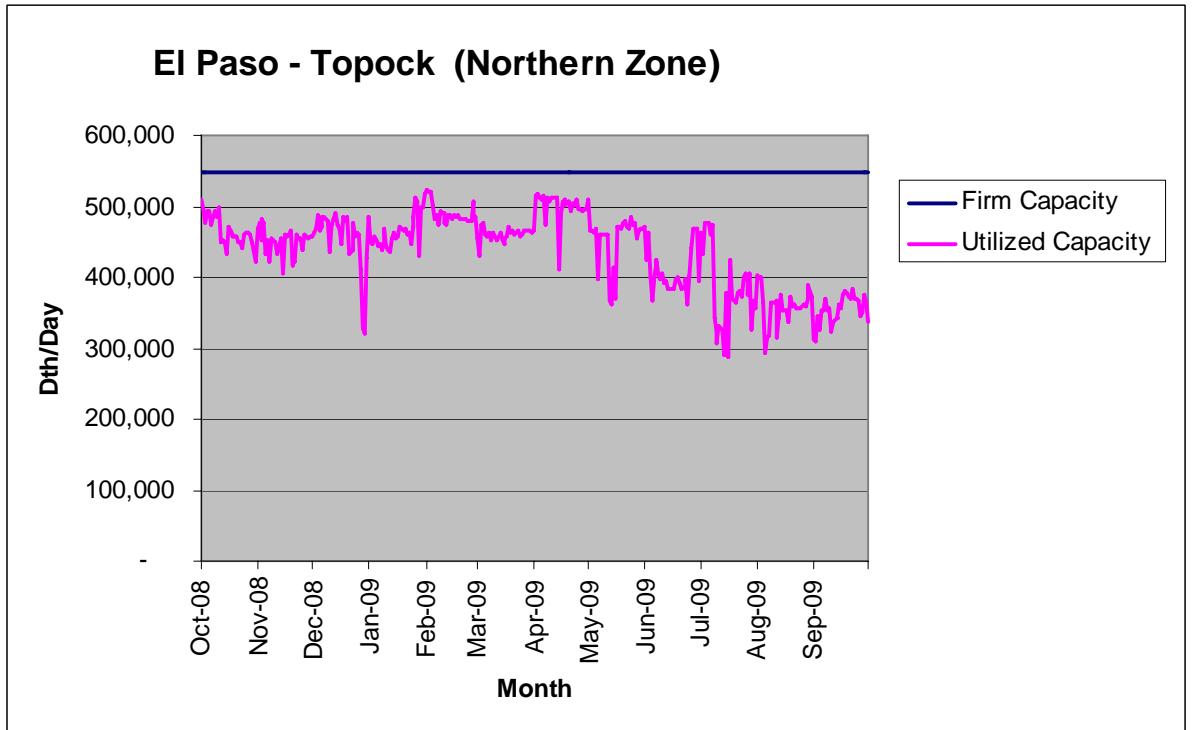
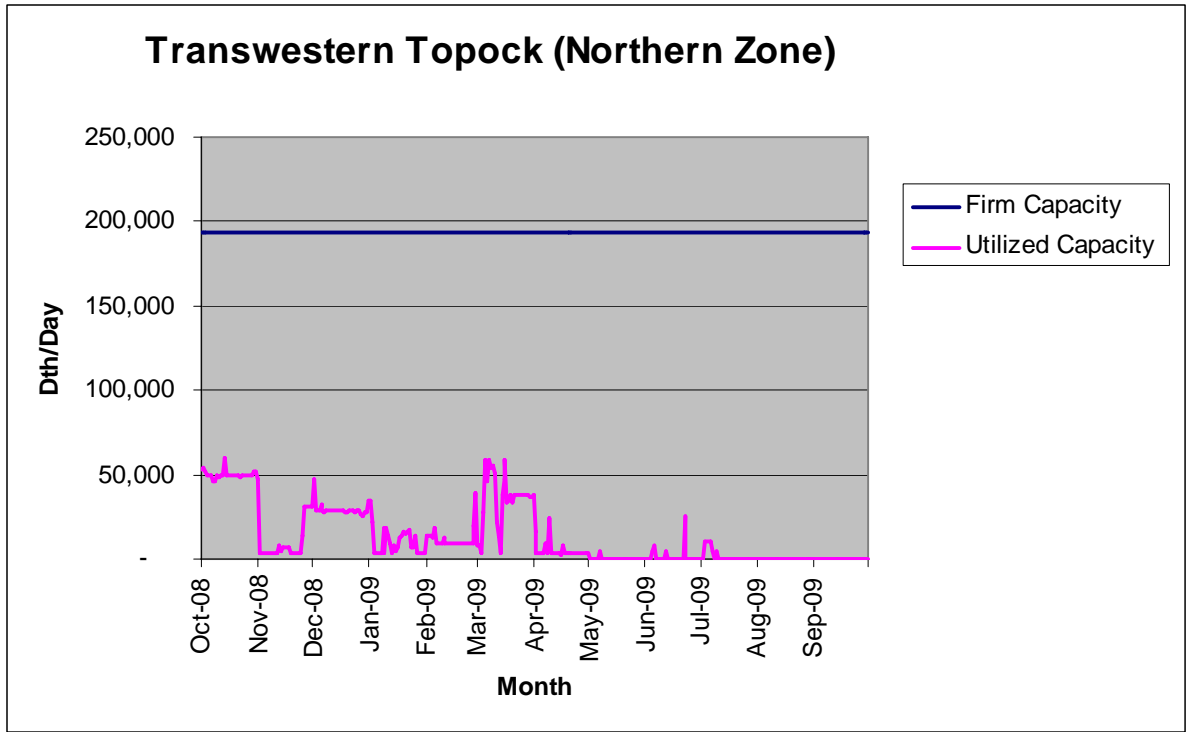
Receipt Point Capacity is the firm capacity determined by SDG&E/SoCalGas which sets the maximum quantity of gas SDG&E/SoCalGas can receive from the upstream pipeline on a firm basis.

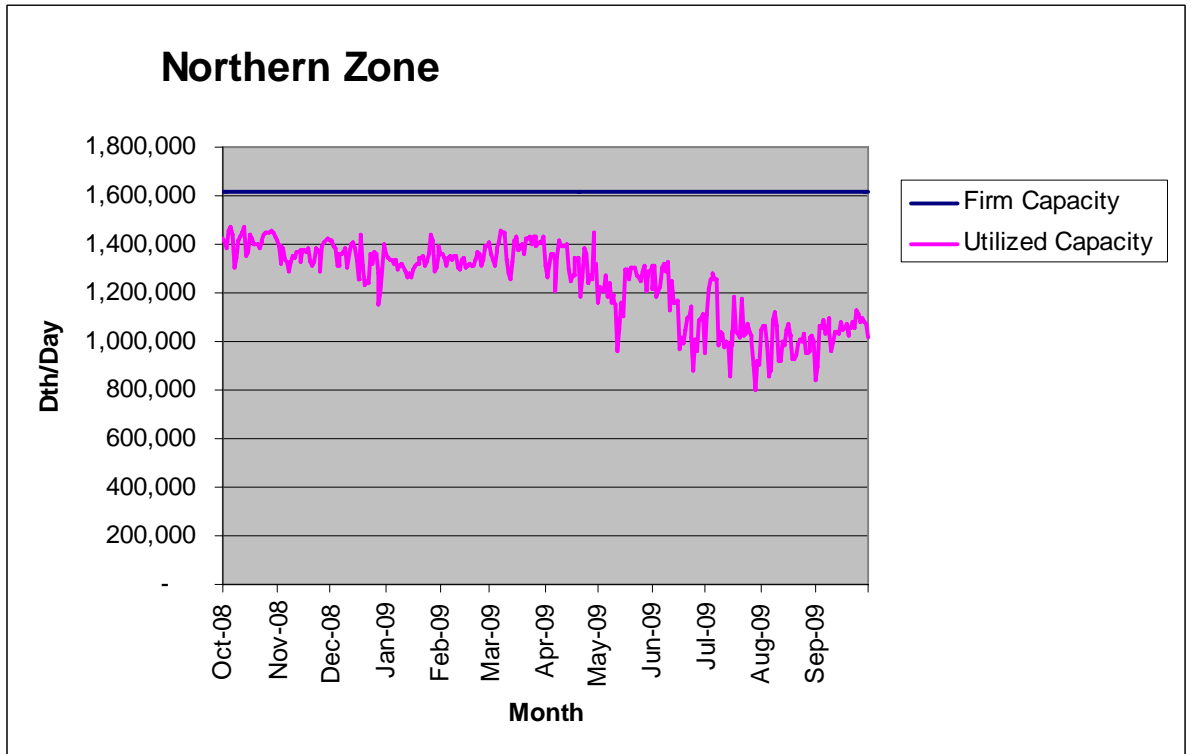
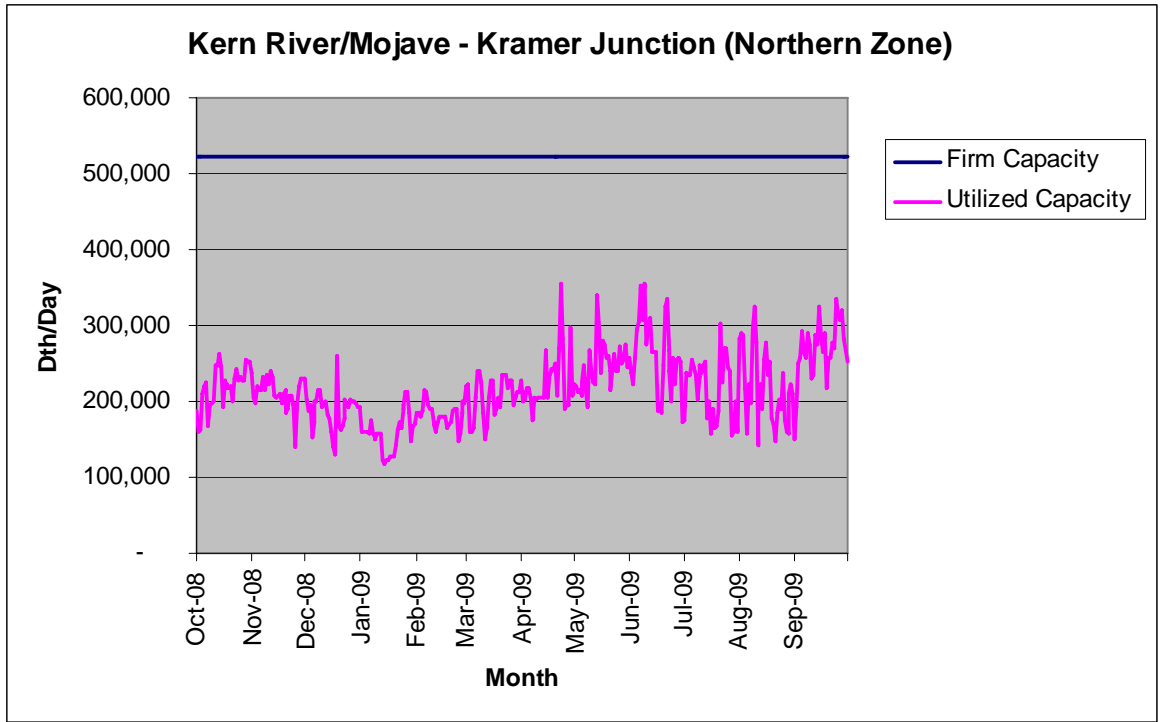
The Firm Capacity for a Transmission Zone is the volume of gas that can be transported from all the individual receipt points within the Transmission Zone on a firm basis. The Scheduled Quantities are the gas volumes that were scheduled by the upstream pipeline through the individual receipt point or the Transmission Zone.

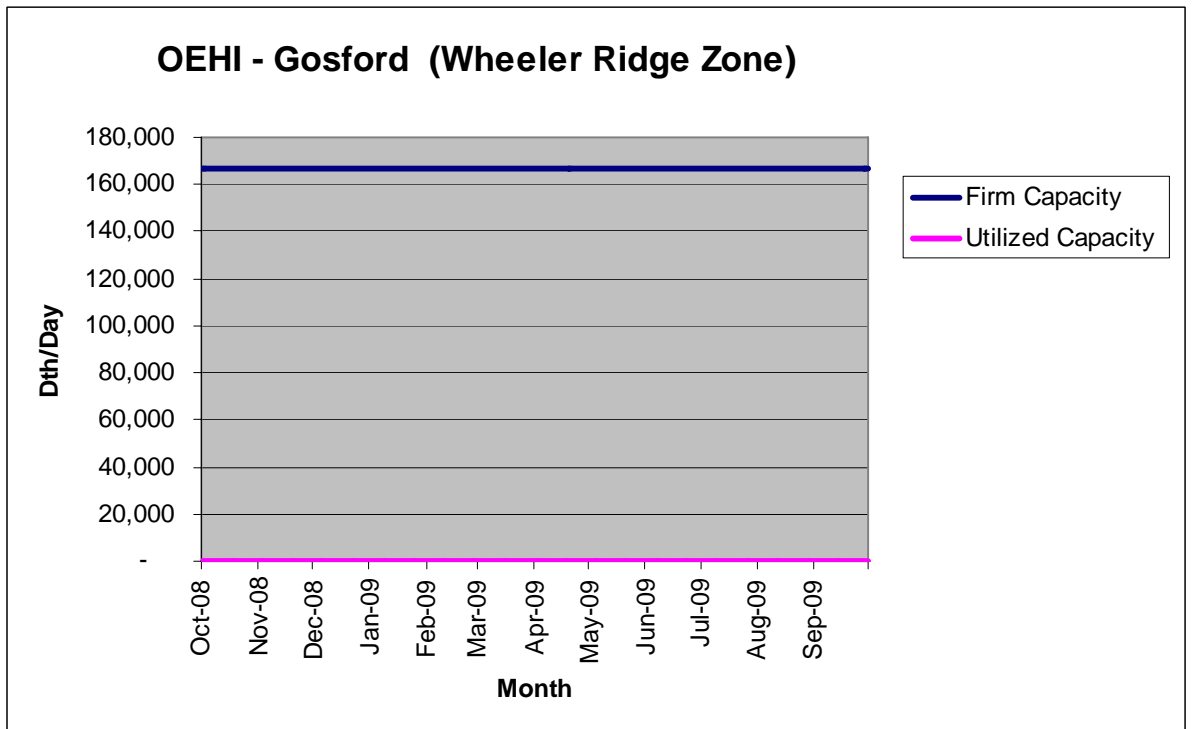
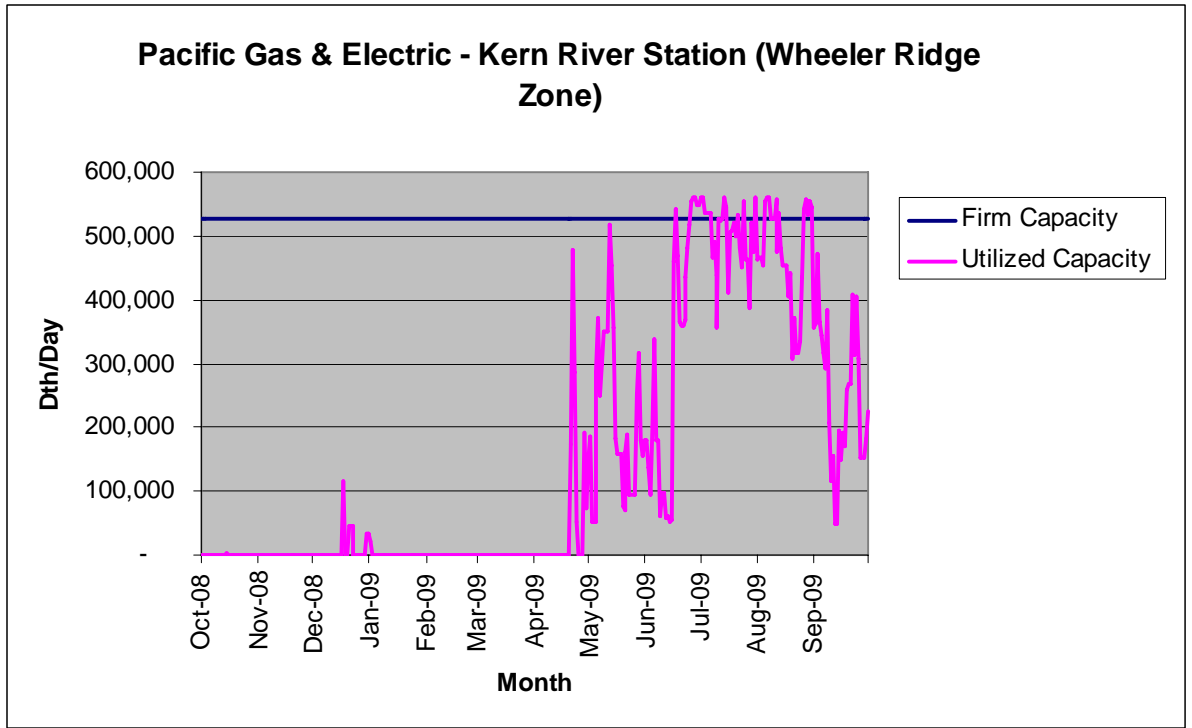
The following graphs show the historical utilization of the receipt points and zones on the SDG&E/SoCalGas system for the 12-month period October 2008 through September 2009. In addition, the last graph shows the total receipt point capacity versus utilization for the system. A system map is also included.

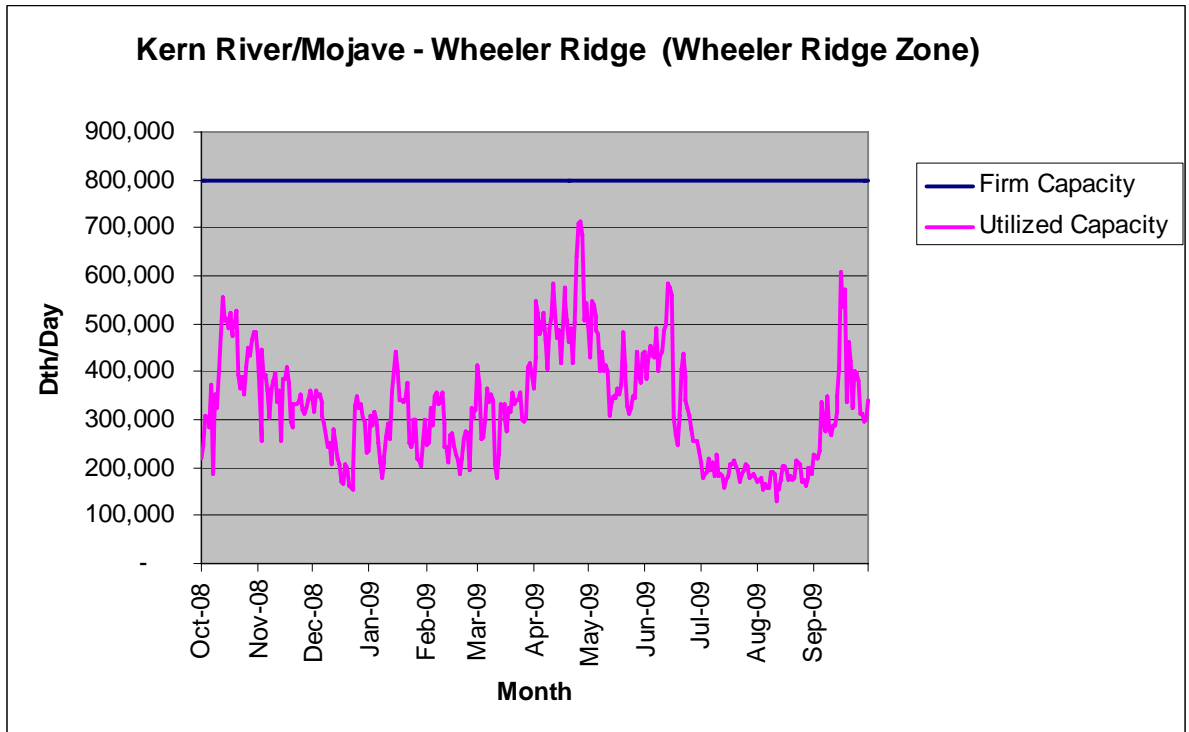
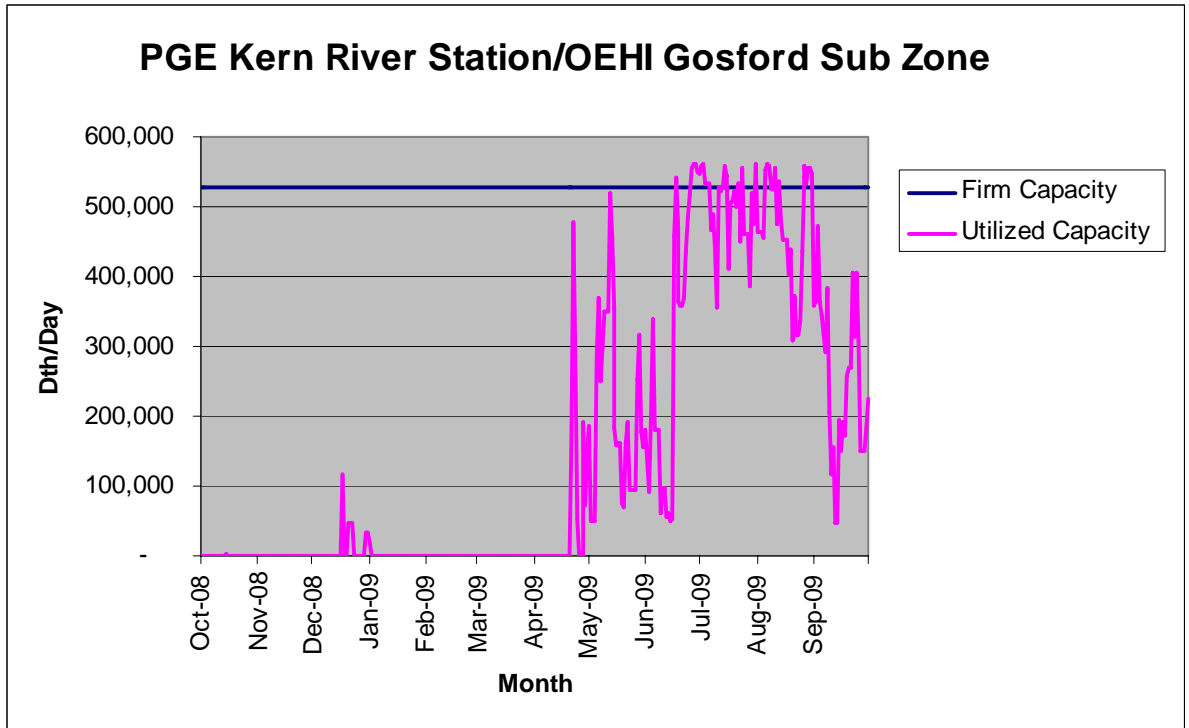


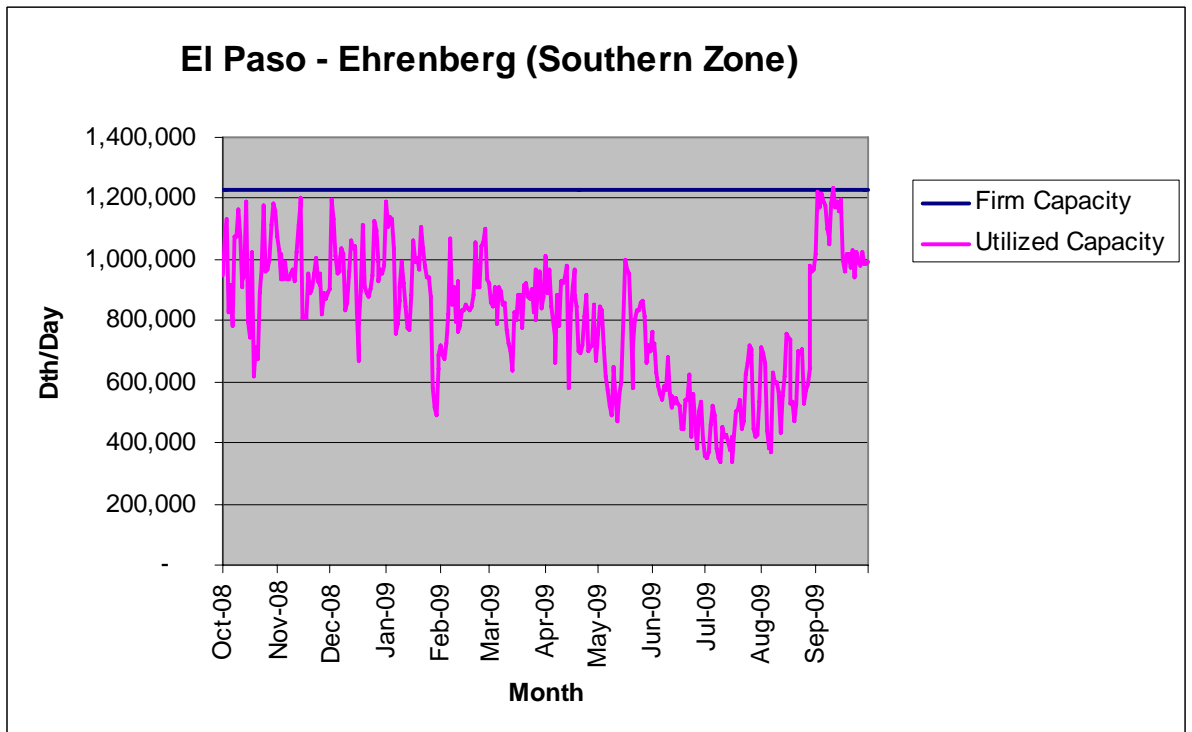
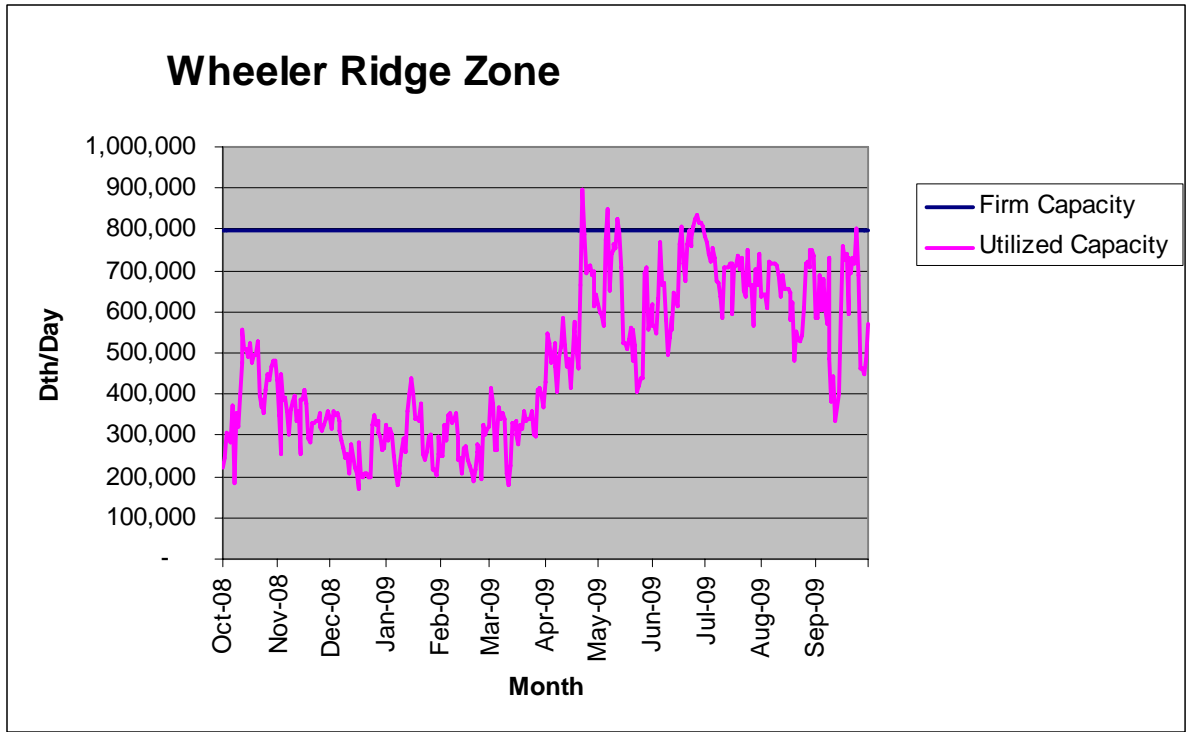


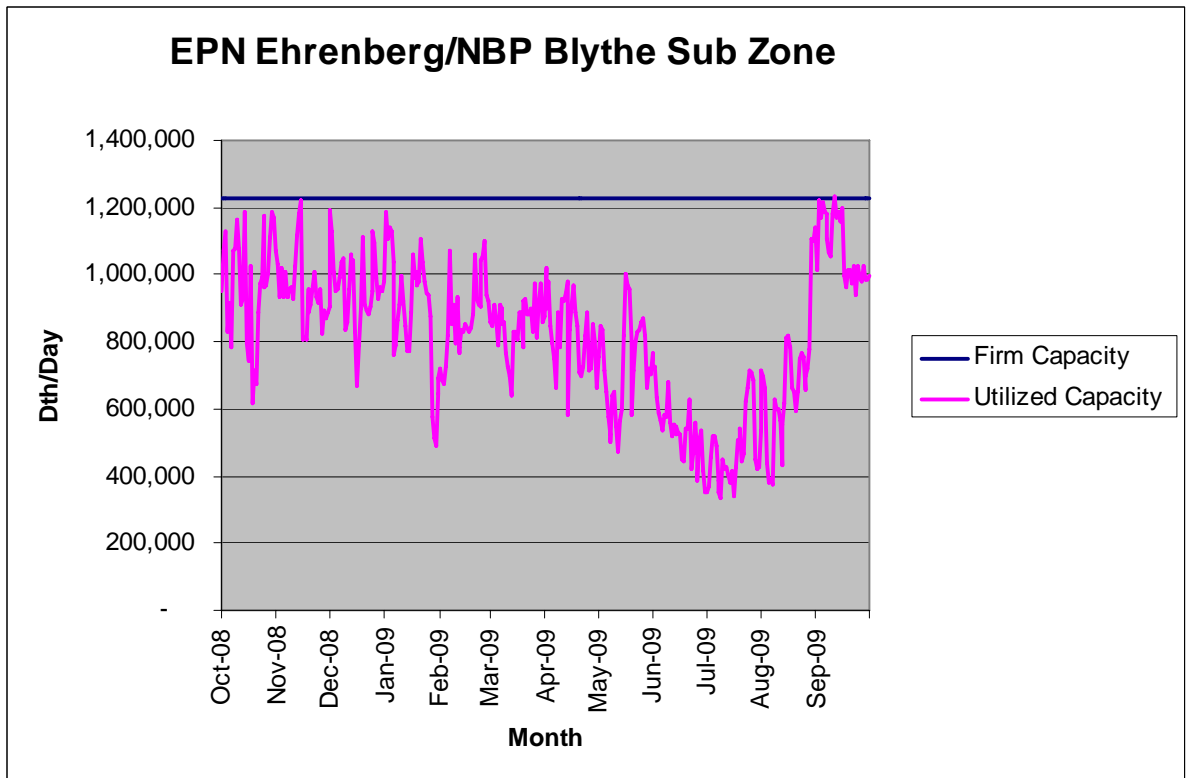
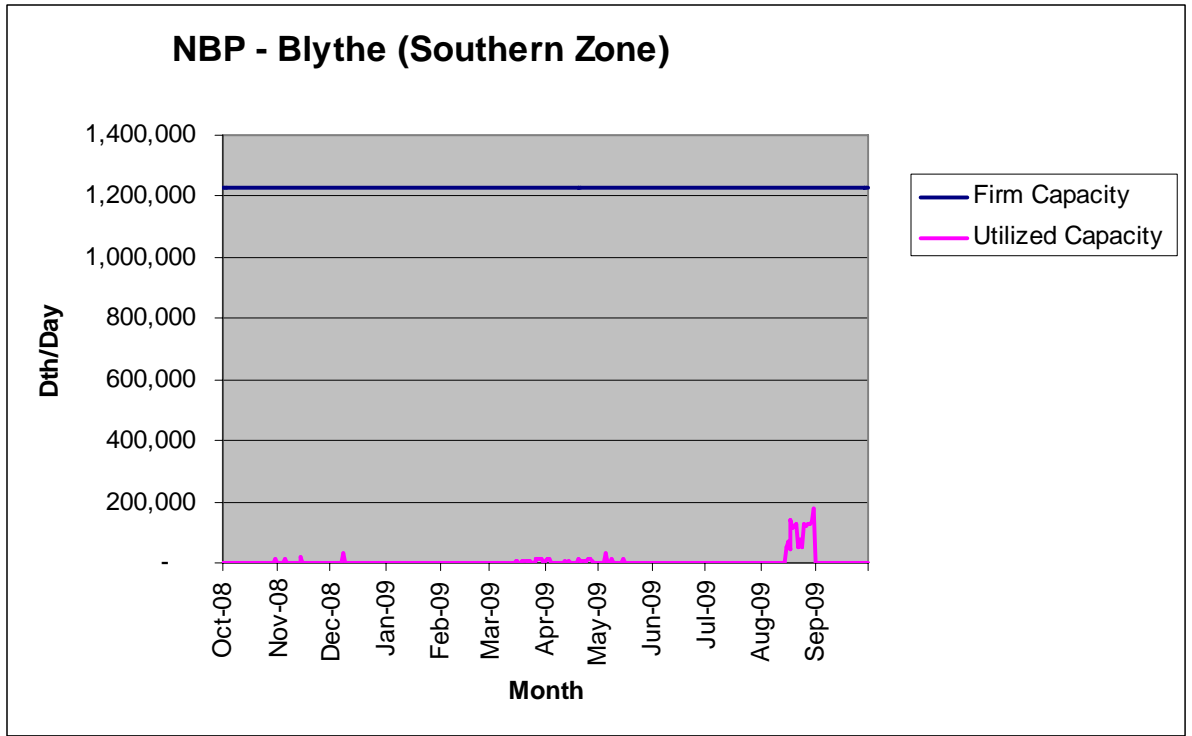


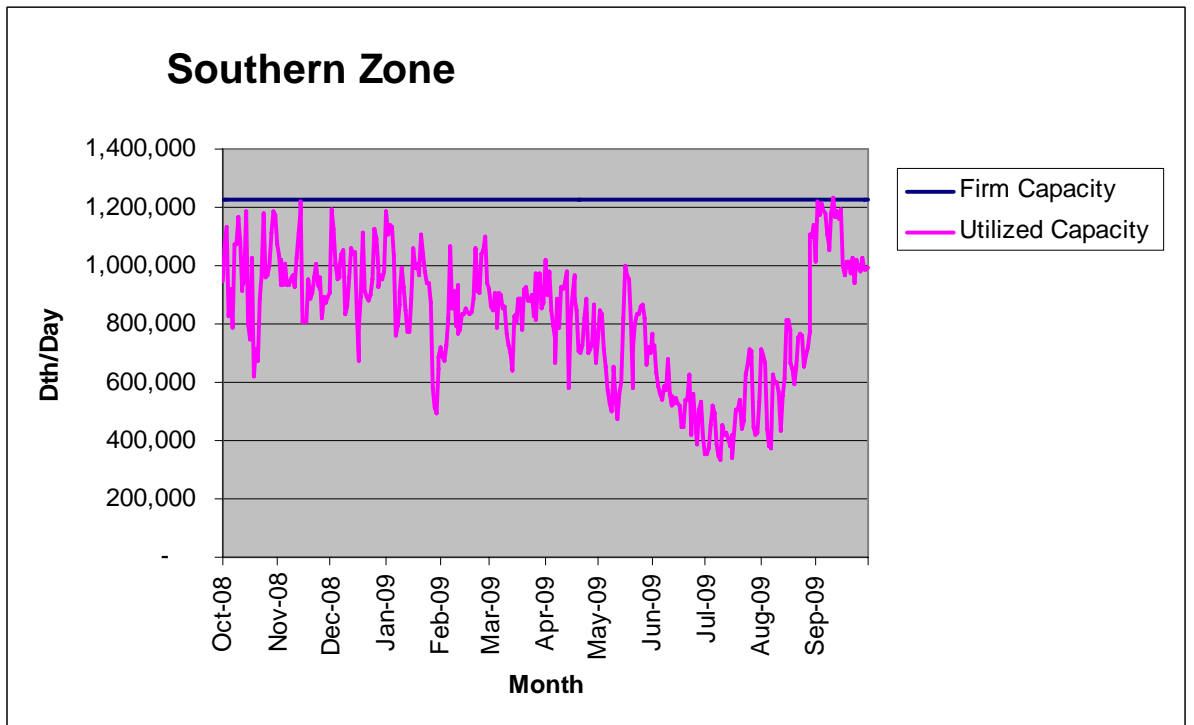
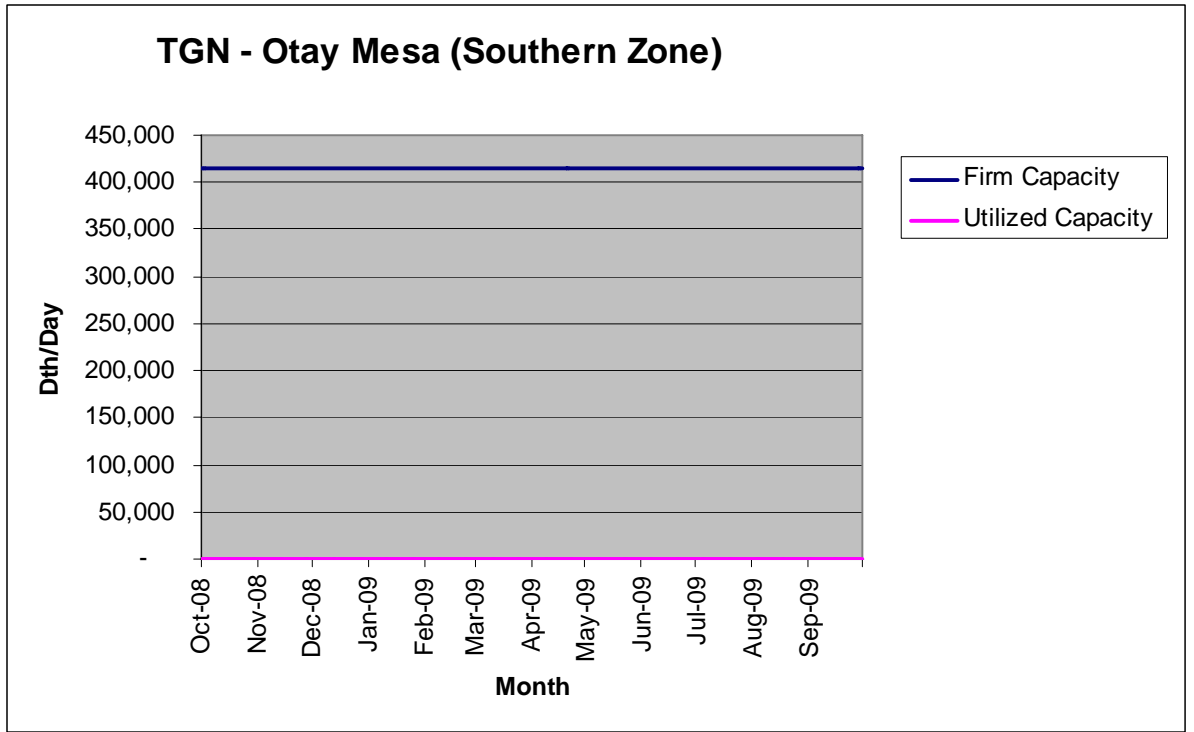


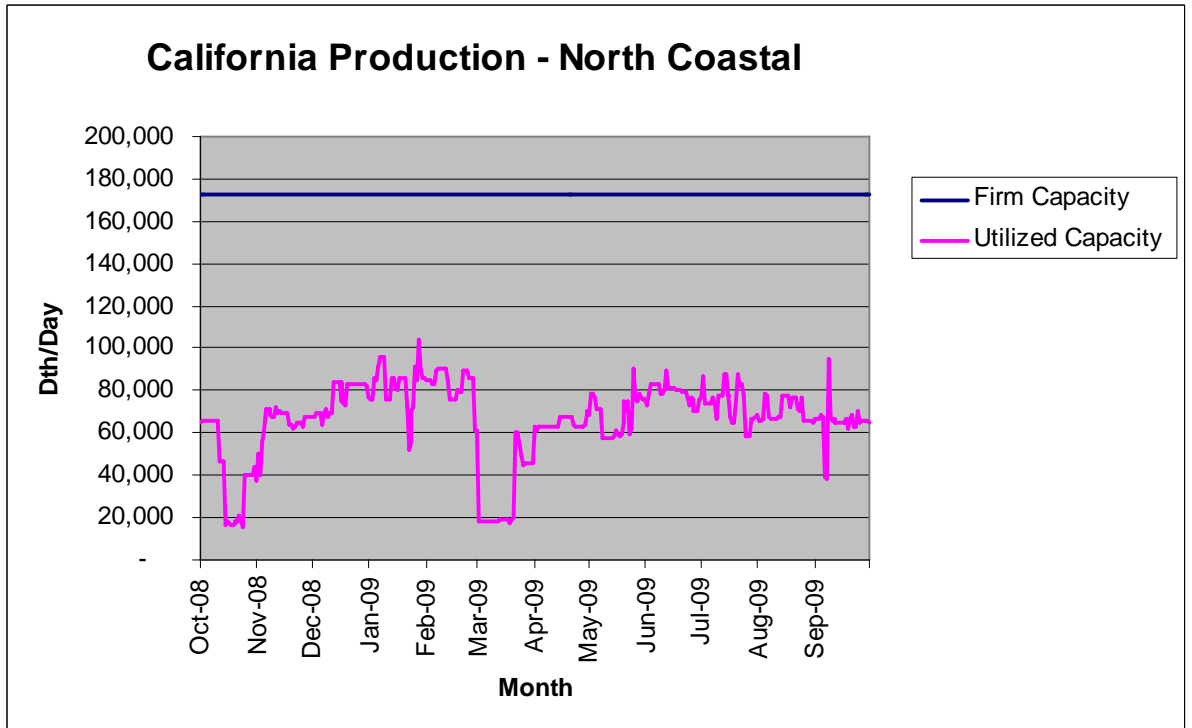
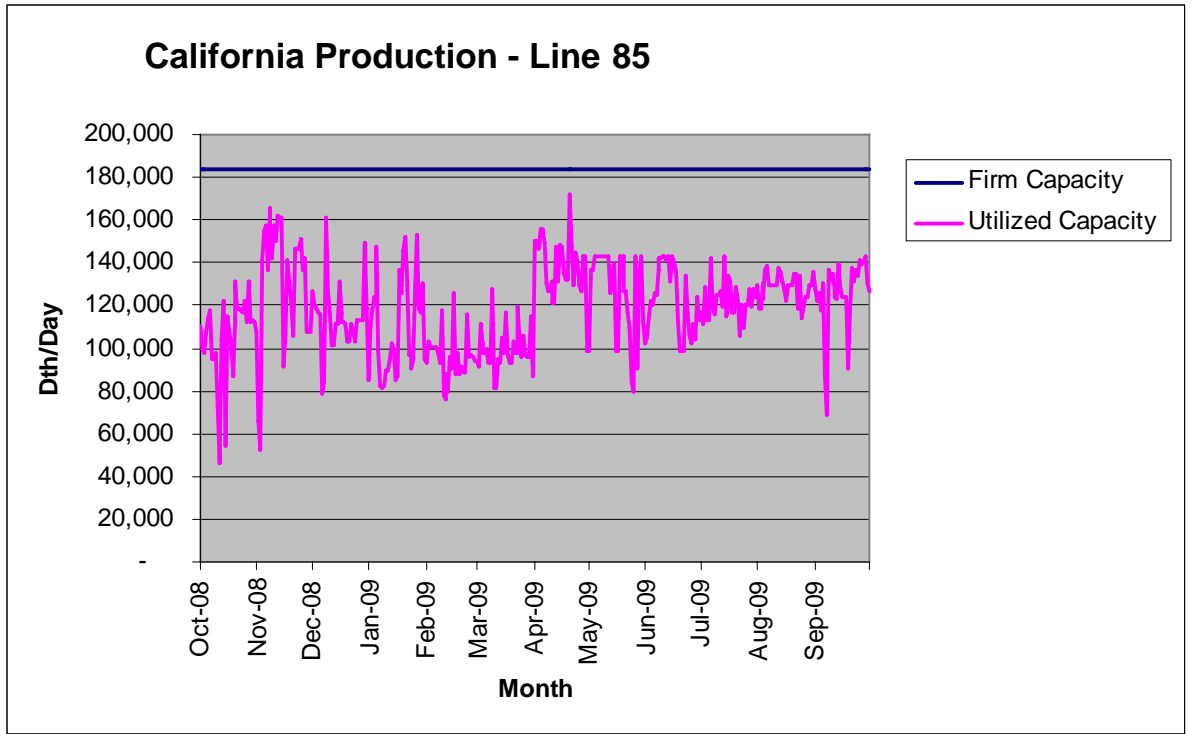


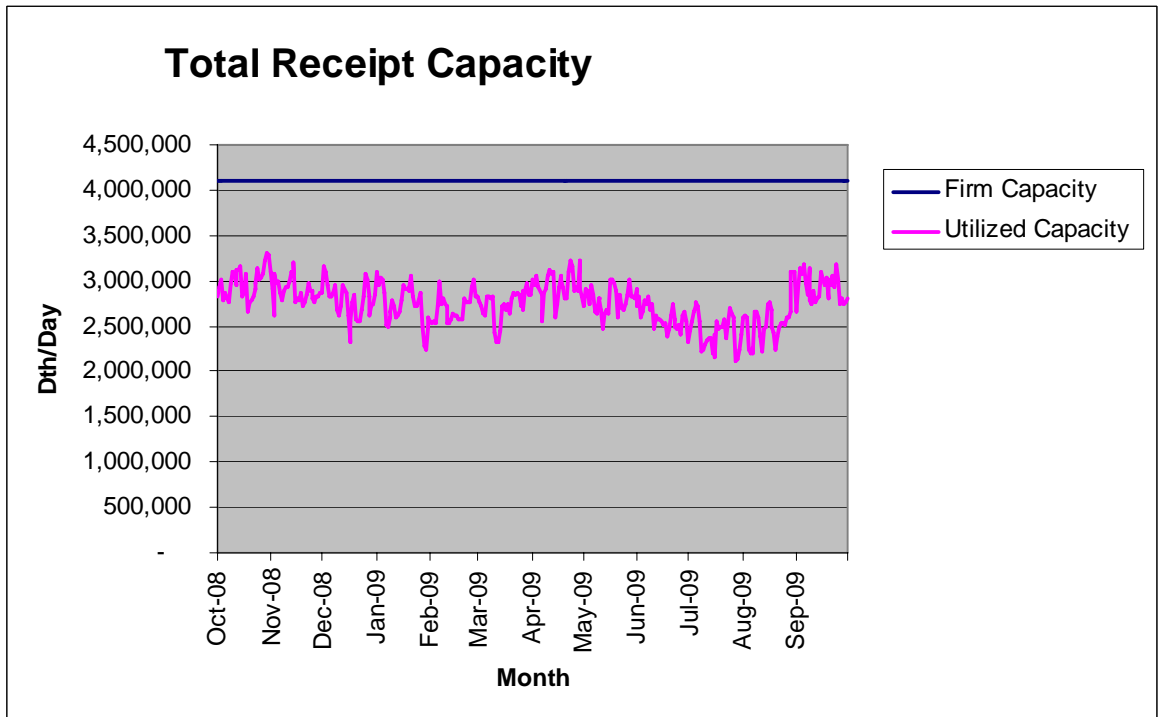
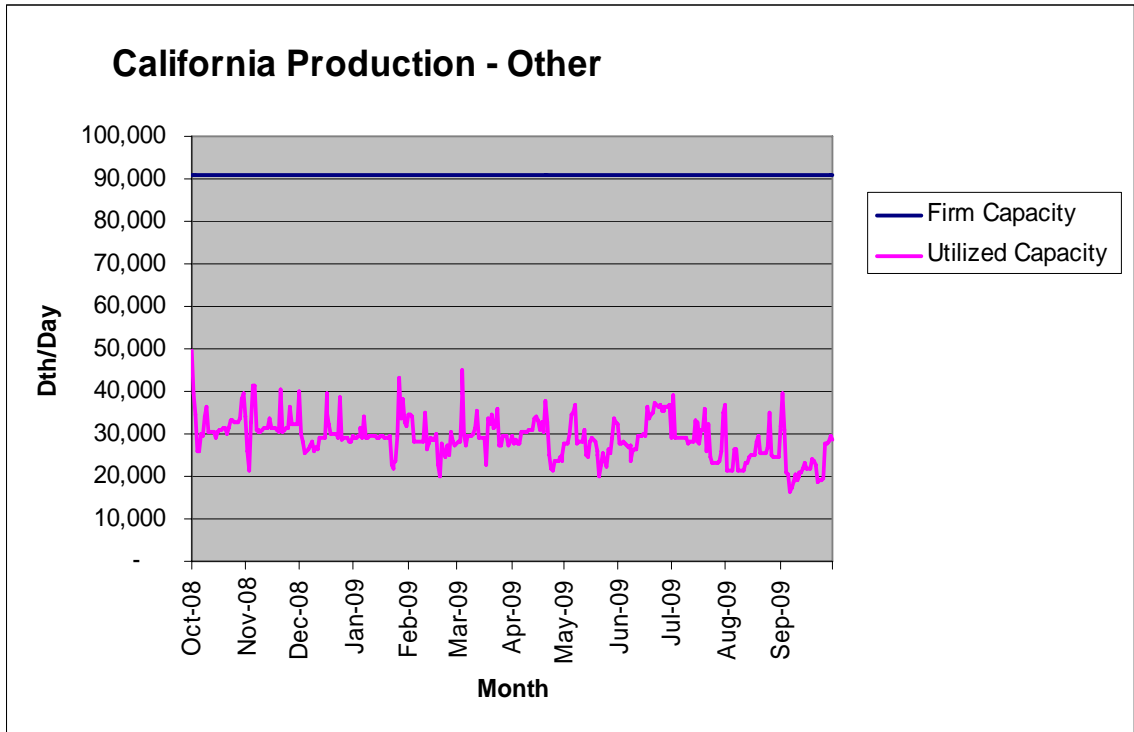






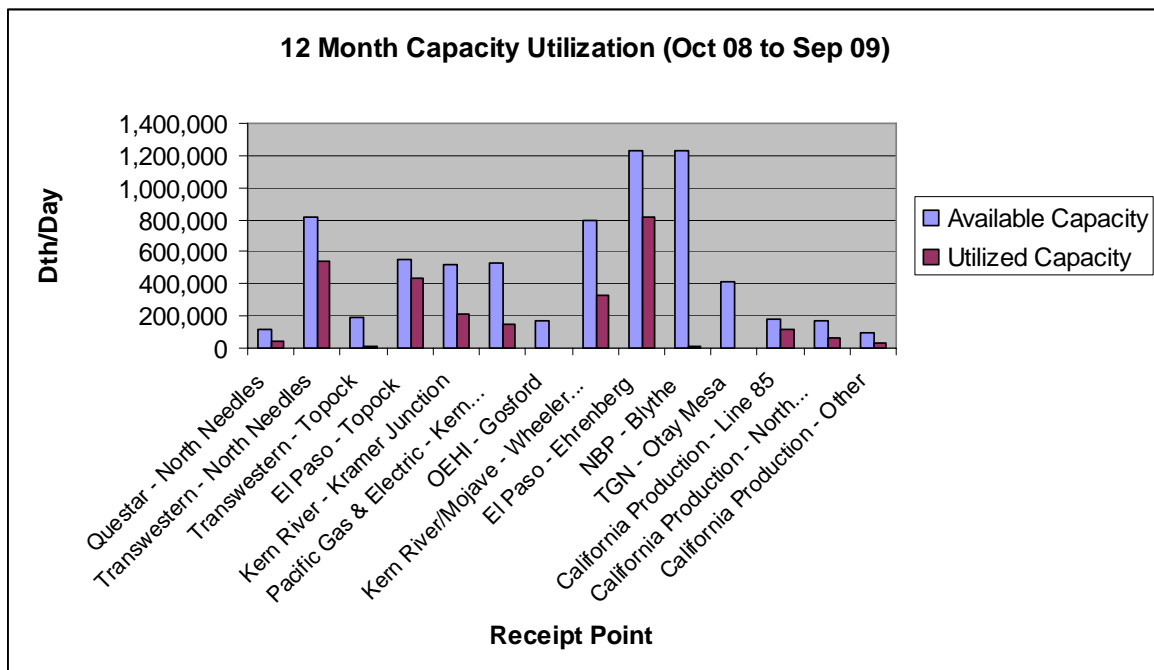




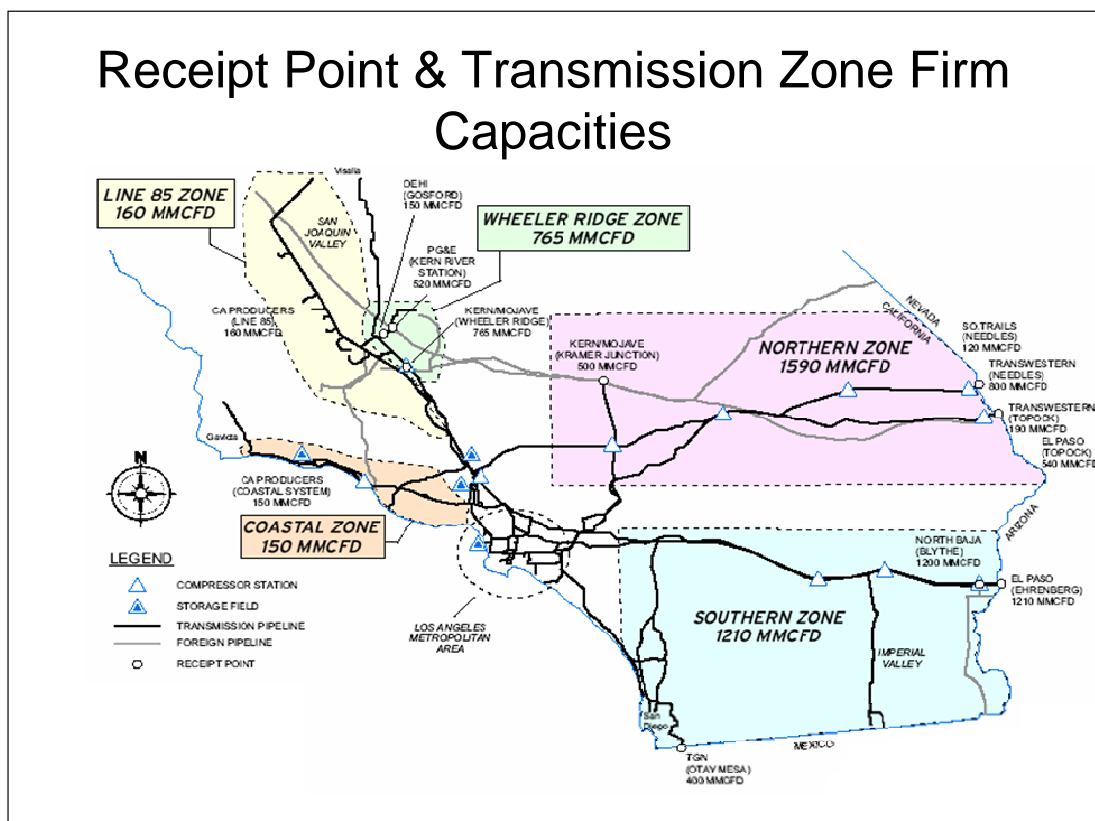


The following table and graph identify locations and summarize the data for SDG&E/SoCalGas' receipt points, sub zones and zones for the 12-month period, October 2008 through September 2009:

RECEIPT POINT/ZONE/SUB ZONE	Available Capacity (Dth/Day)	Utilized Capacity (Dth/Day)	System-Wide Daily Average Utilization (% of Capacity)
Questar - North Needles	121,000	39,112	32%
Transwestern - North Needles	812,000	538,767	66%
TW North Needles/QST North Needles Sub Zone	812,000	577,879	71%
Transwestern - Topock	193,000	12,948	7%
El Paso - Topock	548,000	436,415	80%
Kern River - Kramer Junction	522,000	217,176	42%
Northern Zone	1,620,000	1,244,417	77%
Pacific Gas & Electric - Kern River Station	528,000	150,554	29%
OEHI - Gosford	167,000	0	0%
PGE Kern River Station/OEHI Gosford Sub Zone	528,000	150,554	29%
Kern River/Mojave - Wheeler Ridge	798,000	327,880	41%
Wheeler Ridge Zone	798,000	478,434	60%
El Paso - Ehrenberg	1,229,000	813,100	66%
NBP - Blythe	1,229,000	5,879	0.5%
EPN Ehrenberg/NBP Blythe Sub Zone	1,229,000	818,979	67%
TGN - Otay Mesa	414,000	0	0.0%
Southern Zone	1,229,000	818,978	67%
California Production - Line 85	184,000	118,221	64%
California Production - North Coastal	173,000	66,489	38%
California Production - Other	91,000	29,068	32%
Total Receipt Capacity	4,095,000	2,755,609	67.3%



The following map shows firm capacities of various receipt points and Zones.



Requests for Expansion

SDG&E/SoCalGas have not received any receipt point expansion requests. The Commission has adopted an incremental pricing presumption for expansion of receipt points as indicated by SoCalGas' Rule No. 39.

Action by SDG&E/SoCalGas

The historical capacity utilization for the various receipt points shows that there is no consistently high capacity utilization at any one receipt point that would justify SDG&E/SoCalGas' system expansion at this time. Therefore, SDG&E/SoCalGas are not currently planning to construct any receipt point expansions.

Respectfully submitted,

Sid Newsom
Tariff Manager

Mr. Honesto Gatchalian

October 15, 2009

Page 15

cc: Joyce Alfton, CPUC (email and hard copy)

Richard Myers, CPUC (email only)

James Loewen, CPUC (email only)

Catherine Yap, Barkovich & Yap (email only)

Greg Klatt, Douglass & Liddell (email only)

Dan Douglass, Douglass & Liddell (email only)

Joe Paul, Dynegy (email only)

Jeanne Armstrong, Goodin McBride (email only)

Norman Pedersen, Hanna & Morton (email only)

John Leslie, Luce Forward (email only)

Marcie Milner, Shell (email only)

Michael Alexander, SCE (email only)

Yvonne Gross, Sempra Global (email only)

Chris Hilen, Sierra Pacific (email only)