

Cold (1-in-10  
Likelihood) Yr  
Hdd  
1567

	Total System (MMcf/d)	Total System (MDth/d)	Total System (MMcf/Yr)	Total System (MDth/Yr)	Annual Reserve %
2006	#N/A	#N/A	#N/A	#N/A	
2007	#N/A	#N/A	#N/A	#N/A	
2008	2,642	2,722	967,005	996,208	47%
2009	2,642	2,722	964,416	993,541	47%
2010	2,639	2,719	963,385	992,480	47%
2011	2,624	2,704	957,924	986,854	48%
2012	2,630	2,710	962,636	991,708	47%
2013	2,631	2,710	960,215	989,213	47%
2014	2,632	2,711	960,670	989,682	47%
2015	2,636	2,715	962,099	991,154	47%
2016	2,640	2,720	966,409	995,595	47%
2017	2,666	2,747	973,183	1,002,573	45%
2018	2,662	2,743	971,775	1,001,123	46%
2019	2,671	2,752	974,944	1,004,387	45%
2020	2,677	2,758	979,730	1,009,318	45%
2021	2,721	2,803	993,183	1,023,178	42%
2022	2,786	2,870	1,016,882	1,047,592	39%
2023	2,797	2,882	1,021,064	1,051,900	39%
2024	2,832	2,917	1,036,385	1,067,684	37%
2025	2,884	2,971	1,052,610	1,084,399	34%

Dth/Mcf: 1.0302

Col# for  
"VlookUp"

1      2      3      4      5

Cold (1-in-10  
Likelihood) Yr  
Hdd  
1534

	Total System (MMcf/d)	Total System (MDth/d)	Total System (MMcf/Yr)	Total System (MDth/Yr)	Annual Reserve %
2006	#N/A	#N/A	#N/A	#N/A	
2007	#N/A	#N/A	#N/A	#N/A	
2008	330	335	120,621	122,729	91%
2009	355	362	129,702	131,969	77%
2010	365	371	133,257	135,586	73%
2011	336	342	122,616	124,759	88%
2012	336	342	123,019	125,169	87%
2013	337	343	123,089	125,240	87%
2014	334	340	121,847	123,977	89%
2015	332	338	121,085	123,201	90%
2016	332	338	121,535	123,659	90%
2017	335	340	122,142	124,277	88%
2018	336	342	122,677	124,821	87%
2019	338	344	123,310	125,465	86%
2020	339	345	123,957	126,123	86%
2021	346	352	126,359	128,568	82%
2022	353	359	128,795	131,046	79%
2023	360	366	131,280	133,575	75%
2024	365	372	133,769	136,106	72%
2025	377	384	137,583	139,988	67%

Dth/Mcf: 1.0175

Col# for  
"VlookUp"

1      2      3      4      5

GasResourcePlan\_PeakDayLoad(14Nov2007)4DMB\_1-in-35CoreOnly-Rev SoCalGas coincident\_1-in-35

12Mo Operating Year (Apr-Mar)	2006/7	2007/8	2008/9	2009/10	2010/11	2011/12	2012/13	2013/14	2014/15	2015/16	2016/17	2017/18	2018/19	2019/20	2020/21	2021/22	2022/23	2023/24	2024/25	2025/26?
	MMCFD	MMCFD	MMCFD	MMCFD	MMCFD	MMCFD	MMCFD	MMCFD	MMCFD	MMCFD	MMCFD	MMCFD	MMCFD	MMCFD	MMCFD	MMCFD	MMCFD	MMCFD	MMCFD	MMCFD
core (Bruce)	3120	3106	3083	3082	3086	3089	3085	3078	3070	3063	3057	3046	3037	3030	3030	3029	3030	3033	3038	3045
noncore (Loan)	0	0	0	0	0	0	0	0	0	0	0	0	0	0	0	0	0	0	0	0
eor-Steam + CoGen(Sharon)	0	0	0	0	0	0	0	0	0	0	0	0	0	0	0	0	0	0	0	0
eg (UEG/EWG+Purpa50) (Jeff Huang)	0	0	0	0	0	0	0	0	0	0	0	0	0	0	0	0	0	0	0	0
SmCog+Ref-EG (Rose-Marie/Brenda)	0	0	0	0	0	0	0	0	0	0	0	0	0	0	0	0	0	0	0	0
sidge (Marjorie)	388	387	385	389	391	392	385.5	384.8	384	386	388	388	390	392	394	396	399	401	404	420
lb (Marjorie)	52	57	57	57	57	57	57	57	57	57	57	57	57	57	57	57	57	57	57	57
swg (Marjorie)	74	78	67	71	74	78	82	85	89	92	94	96	98	100	102	104	106	108	110	112
vernon (Marjorie)	5	5	5	5	5	5	5	5	5	5	5	5	5	5	5	5	5	5	5	5
ECO-Gas (Marjorie)	0	0	0	0	0	0	0	0	0	0	0	0	0	0	0	0	0	0	0	0
TOTAL	3639	3633	3599	3605	3613	3621	3615	3610	3605	3604	3601	3592	3587	3584	3588	3591	3597	3604	3614	3639
Noncore (Incl. Wholesale)	519	527	515	523	528	532	529	532	535	541	544	546	550	554	558	562	567	572	576	595
12Mo Operating Year (Apr-Mar)	2006/7	2007/8	2008/9	2009/10	2010/11	2011/12	2012/13	2013/14	2014/15	2015/16	2016/17	2017/18	2018/19	2019/20	2020/21	2021/22	2022/23	2023/24	2024/25	2025/26?
	MMCFD	MMCFD	MMCFD	MMCFD	MMCFD	MMCFD	MMCFD	MMCFD	MMCFD	MMCFD	MMCFD	MMCFD	MMCFD	MMCFD	MMCFD	MMCFD	MMCFD	MMCFD	MMCFD	MMCFD
core	3120	3106	3083	3082	3086	3089	3085	3078	3070	3063	3057	3046	3037	3030	3030	3029	3030	3033	3038	3045
noncore c&i *	0	0	0	0	0	0	0	0	0	0	0	0	0	0	0	0	0	0	0	0
eg **	0	0	0	0	0	0	0	0	0	0	0	0	0	0	0	0	0	0	0	0
wholesale ***	519	527	515	523	528	532	529	532	535	541	544	546	550	554	558	562	567	572	576	595
TOTAL	3639	3633	3599	3605	3613	3621	3615	3610	3605	3604	3601	3592	3587	3584	3588	3591	3597	3604	3614	3639

\* includes eor-steaming and eor-cogen  
 \*\* excludes EOR cogeneration  
 \*\*\* includes international service and wholesale eg

<u>12Mo Operating Year (Apr-Mar)</u>	<u>2006/7</u>	<u>2007/8</u>	<u>2008/9</u>	<u>2009/10</u>	<u>2010/11</u>	<u>2011/12</u>	<u>2012/13</u>	<u>2013/14</u>	<u>2014/15</u>	<u>2015/16</u>	<u>2016/17</u>	<u>2017/18</u>	<u>2018/19</u>	<u>2019/20</u>	<u>2020/21</u>	<u>2021/22</u>	<u>2022/23</u>	<u>2023/24</u>	<u>2024/25</u>	<u>2025/26?</u>
	MMCFD	MMCFD	MMCFD	MMCFD	MMCFD	MMCFD	MMCFD	MMCFD	MMCFD	MMCFD	MMCFD	MMCFD	MMCFD	MMCFD	MMCFD	MMCFD	MMCFD	MMCFD	MMCFD	MMCFD
<b>core (Bruce)</b>	388	387	386	390	391	392	386	385	385	387	388	389	390	392	394	397	399	402	404	421
<b>noncore-nonEG <u>a/</u> (Loan)</b>	0	0	0	0	0	0	0	0	0	0	0	0	0	0	0	0	0	0	0	0
<b>noncore-CoGenEG <u>a/</u> (Loan)</b>	0	0	0	0	0	0	0	0	0	0	0	0	0	0	0	0	0	0	0	0
<b>EG Power-Plant <u>a/</u> (Marjorie/Jeff H.)</b>	0	0	0	0	0	0	0	0	0	0	0	0	0	0	0	0	0	0	0	0
<b>wholesale ***</b>	0	0	0	0	0	0	0	0	0	0	0	0	0	0	0	0	0	0	0	0
<b>TOTAL</b>	388.43	387	386	390	391	392	385.9	385.2	385	387	388	389	390	392	394	397	399	402	404	421
<b>Noncore</b>	0	0	0	0	0	0	0	0	0	0	0	0	0	0	0	0	0	0	0	0
<u>12Mo Operating Year (Apr-Mar)</u>	<u>2006/7</u>	<u>2007/8</u>	<u>2008/9</u>	<u>2009/10</u>	<u>2010/11</u>	<u>2011/12</u>	<u>2012/13</u>	<u>2013/14</u>	<u>2014/15</u>	<u>2015/16</u>	<u>2016/17</u>	<u>2017/18</u>	<u>2018/19</u>	<u>2019/20</u>	<u>2020/21</u>	<u>2021/22</u>	<u>2022/23</u>	<u>2023/24</u>	<u>2024/25</u>	<u>2025/26?</u>
	MMCFD	MMCFD	MMCFD	MMCFD	MMCFD	MMCFD	MMCFD	MMCFD	MMCFD	MMCFD	MMCFD	MMCFD	MMCFD	MMCFD	MMCFD	MMCFD	MMCFD	MMCFD	MMCFD	MMCFD
<b>core</b>	388	387	386	390	391	392	386	385	385	387	388	389	390	392	394	397	399	402	404	421
<b>noncore c&amp;i *</b>	0	0	0	0	0	0	0	0	0	0	0	0	0	0	0	0	0	0	0	0
<b>eg **</b>	0	0	0	0	0	0	0	0	0	0	0	0	0	0	0	0	0	0	0	0
<b>wholesale ***</b>	0	0	0	0	0	0	0	0	0	0	0	0	0	0	0	0	0	0	0	0
<b>TOTAL</b>	388	387	386	390	391	392	386	385	385	387	388	389	390	392	394	397	399	402	404	421

\* includes CoGenEG

\*\* Only Power-Plant Load (i.e., excludes cogeneration from above)

\*\*\* SDG&E does not provide wholesale gas service.

<sup>a/</sup> Gas demand forecasts for noncore commercial & industrial (C&I)

and electric generation (EG) customer classes do not distinguish between firm and interruptible noncore service.

Thus, for the purposes of this assessment, SDG&E assumed that all future peak loads elected firm noncore service,

until SDG&E has a mechanism to identify specific customer firm service requests beyond the current two-year firm noncore service election.

GasResourcePlan\_PeakDayLoad(14Nov2007)4DMB\_1-in-10 SoCalGas coincident\_1-in-10

12Mo Operating Year (Apr-Mar)	2006/7	2007/8	2008/9	2009/10	2010/11	2011/12	2012/13	2013/14	2014/15	2015/16	2016/17	2017/18	2018/19	2019/20	2020/21	2021/22	2022/23	2023/24	2024/25	2025/26?
	MMCFD	MMCFD	MMCFD	MMCFD	MMCFD	MMCFD	MMCFD	MMCFD	MMCFD	MMCFD	MMCFD	MMCFD	MMCFD	MMCFD	MMCFD	MMCFD	MMCFD	MMCFD	MMCFD	MMCFD
<b>core (Bruce)</b>	2888	2874	2853	2852	2856	2859	2856	2849	2842	2836	2830	2820	2811	2805	2805	2804	2806	2809	2813	2820
<b>noncore (Loan)</b>	453	438	426	421	421	421	414	415	415	416	416	415	412	411	409	408	408	407	406	406
<b>eor-Steam + CoGen(Sharon)</b>	111	101	86	39	39	39	29	29	29	29	29	29	29	29	29	29	29	29	29	29
<b>eg (UEG/EWG+Purpa50) (Jeff Huang)</b>	625	685	860	789	777	769	715	710	705	700	742	785	827	869	911	946	982	1018	1053	1089
<b>SmCog+Ref-EG (Rose-Marie/Brenda)</b>	104	98	98	98	98	98	105	105	106	107	107	108	108	108	108	108	108	109	109	109
<b>sdge (Marjorie)</b>	621	564	569	626	626	596	601	592	582	575	581	586	592	598	604	614	625	636	646	670
<b>lb (Marjorie)</b>	52	63	63	63	63	63	63	63	63	63	63	63	63	63	63	63	63	63	63	63
<b>swg (Marjorie)</b>	72	75	58	61	64	66	69	72	74	77	79	80	82	83	85	87	89	90	92	94
<b>vernon (Marjorie)</b>	22	22	33	33	33	23	23	23	23	23	23	23	23	23	23	23	23	23	23	23
<b>ECO-Gas (Marjorie)</b>	16	13	14	14	14	14	14	14	15	15	15	15	15	15	15	15	15	15	15	15
<b>TOTAL</b>	4965	4934	5060	4996	4991	4949	4890	4873	4855	4841	4884	4922	4961	5003	5052	5098	5147	5197	5250	5317
<b>Noncore (Incl. Wholesale)</b>	2077	2060	2207	2144	2135	2090	2034	2024	2013	2005	2054	2103	2150	2198	2247	2294	2341	2389	2437	2497
<b>12Mo Operating Year (Apr-Mar)</b>	<b>2006/7</b>	<b>2007/8</b>	<b>2008/9</b>	<b>2009/10</b>	<b>2010/11</b>	<b>2011/12</b>	<b>2012/13</b>	<b>2013/14</b>	<b>2014/15</b>	<b>2015/16</b>	<b>2016/17</b>	<b>2017/18</b>	<b>2018/19</b>	<b>2019/20</b>	<b>2020/21</b>	<b>2021/22</b>	<b>2022/23</b>	<b>2023/24</b>	<b>2024/25</b>	<b>2025/26?</b>
<b>core</b>	2888	2874	2853	2852	2856	2859	2856	2849	2842	2836	2830	2820	2811	2805	2805	2804	2806	2809	2813	2820
<b>noncore c&amp;i *</b>	563	539	512	460	460	459	443	444	444	445	445	444	441	440	438	437	437	436	435	435
<b>eg **</b>	730	783	958	887	875	867	820	816	811	807	850	892	934	976	1019	1054	1090	1126	1162	1198
<b>wholesale ***</b>	784	737	737	797	799	763	771	764	757	753	760	767	774	782	790	802	814	827	839	864
<b>TOTAL</b>	4965	4934	5060	4996	4991	4949	4890	4873	4855	4841	4884	4922	4961	5003	5052	5098	5147	5197	5250	5317

\* includes eor-steaming *and* eor-cogen  
 \*\* excludes EOR cogeneration  
 \*\*\* includes international service and wholesale eg

GasResourcePlan\_PeakDayLoad(14Nov2007)4DMB\_1-in-10 SDG&E coincident\_1-in-10

12Mo Operating Year (Apr-Mar)	2006/7	2007/8	2008/9	2009/10	2010/11	2011/12	2012/13	2013/14	2014/15	2015/16	2016/17	2017/18	2018/19	2019/20	2020/21	2021/22	2022/23	2023/24	2024/25	2025/26?
	MMCFD	MMCFD	MMCFD	MMCFD	MMCFD	MMCFD	MMCFD	MMCFD	MMCFD	MMCFD	MMCFD	MMCFD	MMCFD	MMCFD	MMCFD	MMCFD	MMCFD	MMCFD	MMCFD	MMCFD
core (Bruce)	364	362	361	365	366	367	361	360	360	362	363	364	365	367	369	371	373	376	378	393
noncore-nonEG <sup>a/</sup> (Loan)	10	11	11	11	11	11	10	10	10	10	10	11	11	11	11	11	11	11	11	12
noncore-CoGenEG <sup>a/</sup> (Loan)	52	52	52	53	53	54	54	54	55	55	56	56	57	57	57	58	58	59	59	60
EG Power-Plant <sup>a/</sup> (Marjorie/Jeff H.)	197	139	145	198	196	165	176	167	158	149	153	156	160	164	168	175	183	190	198	206
<b>wholesale ***</b>	0	0	0	0	0	0	0	0	0	0	0	0	0	0	0	0	0	0	0	0
<b>TOTAL</b>	622.12	564	569	626	626	596	602	592	583	576	581	587	592	598	605	615	626	636	647	670
<b>Noncore</b>	259	202	208	262	260	229	241	232	223	214	218	223	227	231	236	244	252	260	269	277
12Mo Operating Year (Apr-Mar)	2006/7	2007/8	2008/9	2009/10	2010/11	2011/12	2012/13	2013/14	2014/15	2015/16	2016/17	2017/18	2018/19	2019/20	2020/21	2021/22	2022/23	2023/24	2024/25	2025/26?
	MMCFD	MMCFD	MMCFD	MMCFD	MMCFD	MMCFD	MMCFD	MMCFD	MMCFD	MMCFD	MMCFD	MMCFD	MMCFD	MMCFD	MMCFD	MMCFD	MMCFD	MMCFD	MMCFD	MMCFD
core	364	362	361	365	366	367	361	360	360	362	363	364	365	367	369	371	373	376	378	393
noncore c&i *	62	64	64	64	64	64	64	65	65	65	66	67	67	68	68	69	69	70	71	71
eg **	197	139	145	198	196	165	176	167	158	149	153	156	160	164	168	175	183	190	198	206
<b>wholesale ***</b>	0	0	0	0	0	0	0	0	0	0	0	0	0	0	0	0	0	0	0	0
<b>TOTAL</b>	622	564	569	626	626	596	602	592	583	576	581	587	592	598	605	615	626	636	647	670

\* includes CoGenEG

\*\* Only Power-Plant Load (i.e., excludes cogeneration from above)

\*\*\* SDG&E does not provide wholesale gas service.

<sup>a/</sup> Gas demand forecasts for noncore commercial & industrial (C&I)

and electric generation (EG) customer classes do not distinguish between firm and interruptible noncore service.

Thus, for the purposes of this assessment, SDG&E assumed that all future peak loads elected firm noncore service,

until SDG&E has a mechanism to identify specific customer firm service requests beyond the current two-year firm noncore service election.

Rainbow Corridor forecast

	<u>Core</u>	<u>EG</u>	<u>Total</u>
	<u>MMcfd</u>	<u>MMcfd</u>	<u>MMcfd</u>
2009/10	86	109	195
2010/11	90	83	173
2011/12	95	112	207
2012/13	100	114	214
2013/14	105	114	219
2014/15	110	109	219
2015/16	116	114	230
2016/17	122	114	236
2017/18	128	114	242
2018/19	135	114	249
2019/20	142	114	256
2020/21	149	114	263
2021/22	157	114	271
2022/23	165	114	279
2023/24	173	114	287

SJV\_CoreSetAsideFcst(26Jun2007)ExtendedFurtherver2(SJV-Estimates(26Jun2007))

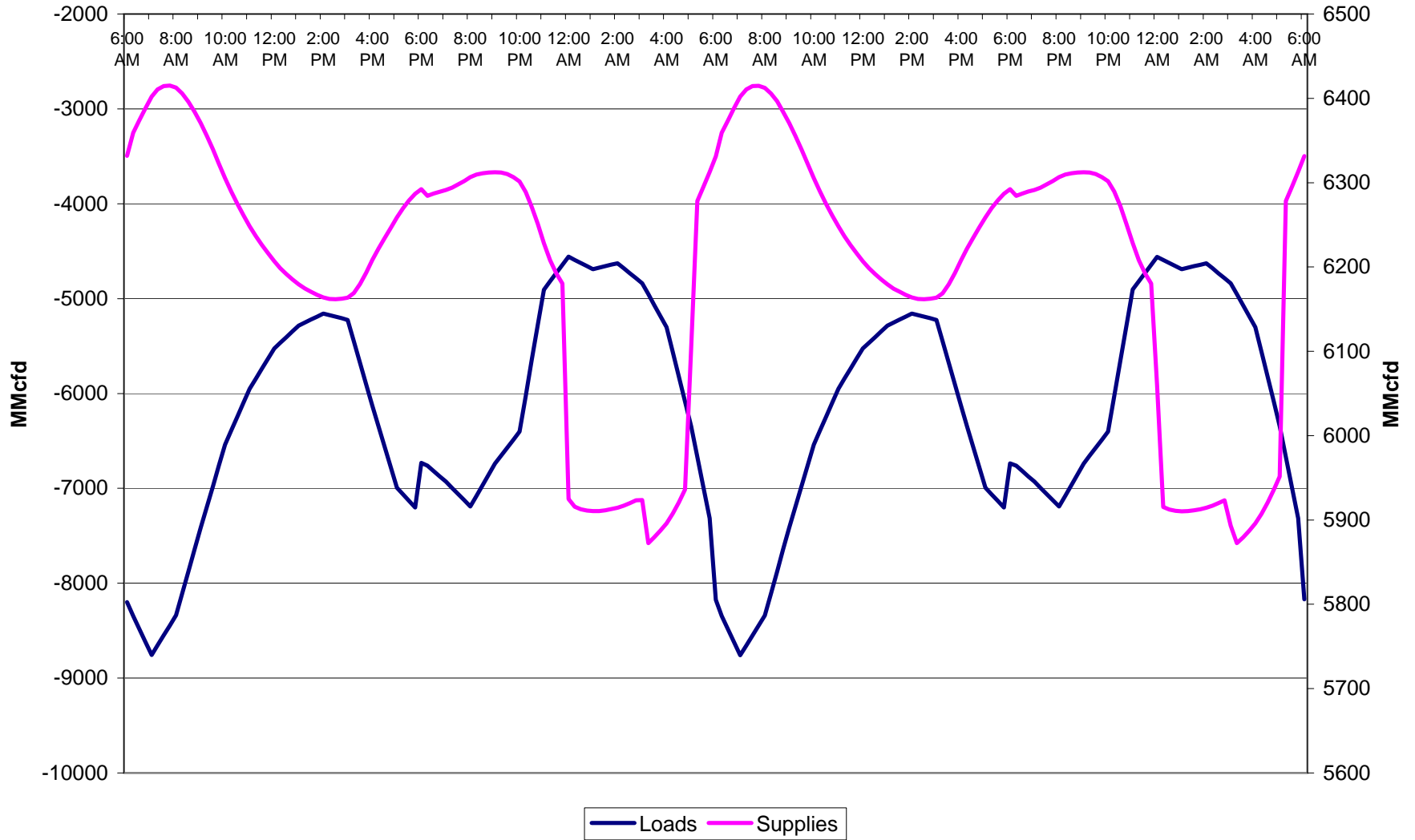
FINAL of Feb. 8th, 2007 and EXTENDED through March 2017

Month/ Year	month	year	Residen- tial (MDth/d)	G10&GEN (MDth/d)	NGV (MDth/d)	Total Core "Set- Aside"
Jan-06	1	2006	73.0	34.6	0.169	107.8
<b>Jan-07</b>	1	2007	<b>74.7</b>	<b>35.7</b>	<b>0.327</b>	<b>110.8</b>
<b>Jan-08</b>	1	2008	<b>76.3</b>	<b>36.9</b>	<b>0.327</b>	<b>113.5</b>
<b>Jan-09</b>	1	2009	<b>77.9</b>	<b>38.1</b>	<b>0.327</b>	<b>116.4</b>
<b>Jan-10</b>	1	2010	<b>79.7</b>	<b>39.3</b>	<b>0.327</b>	<b>119.3</b>
<b>Jan-11</b>	1	2011	<b>81.5</b>	<b>40.6</b>	<b>0.327</b>	<b>122.4</b>
<b>Jan-12</b>	1	2012	<b>83.3</b>	<b>41.9</b>	<b>0.311</b>	<b>125.5</b>
Jan-13	1	2013	85.1	43.3	0.297	128.7
Jan-14	1	2014	86.9	44.7	0.282	131.9
Jan-15	1	2015	88.8	46.2	0.269	135.2
Jan-16	1	2016	90.8	47.6	0.256	138.7
Jan-17	1	2017	92.7	49.2	0.244	142.2
Jan-18	1	2018	94.8	50.8	0.232	145.8
Jan-19	1	2019	96.8	52.4	0.221	149.5
Jan-20	1	2020	98.9	54.1	0.211	153.3
Jan-21	1	2021	101.1	55.9	0.201	157.2
Jan-22	1	2022	103.3	57.7	0.191	161.2
Jan-23	1	2023	105.5	59.6	0.182	165.3
Jan-24	1	2024	107.8	61.5	0.173	169.5
Jan-25	1	2025	110.2	63.5	0.165	173.9

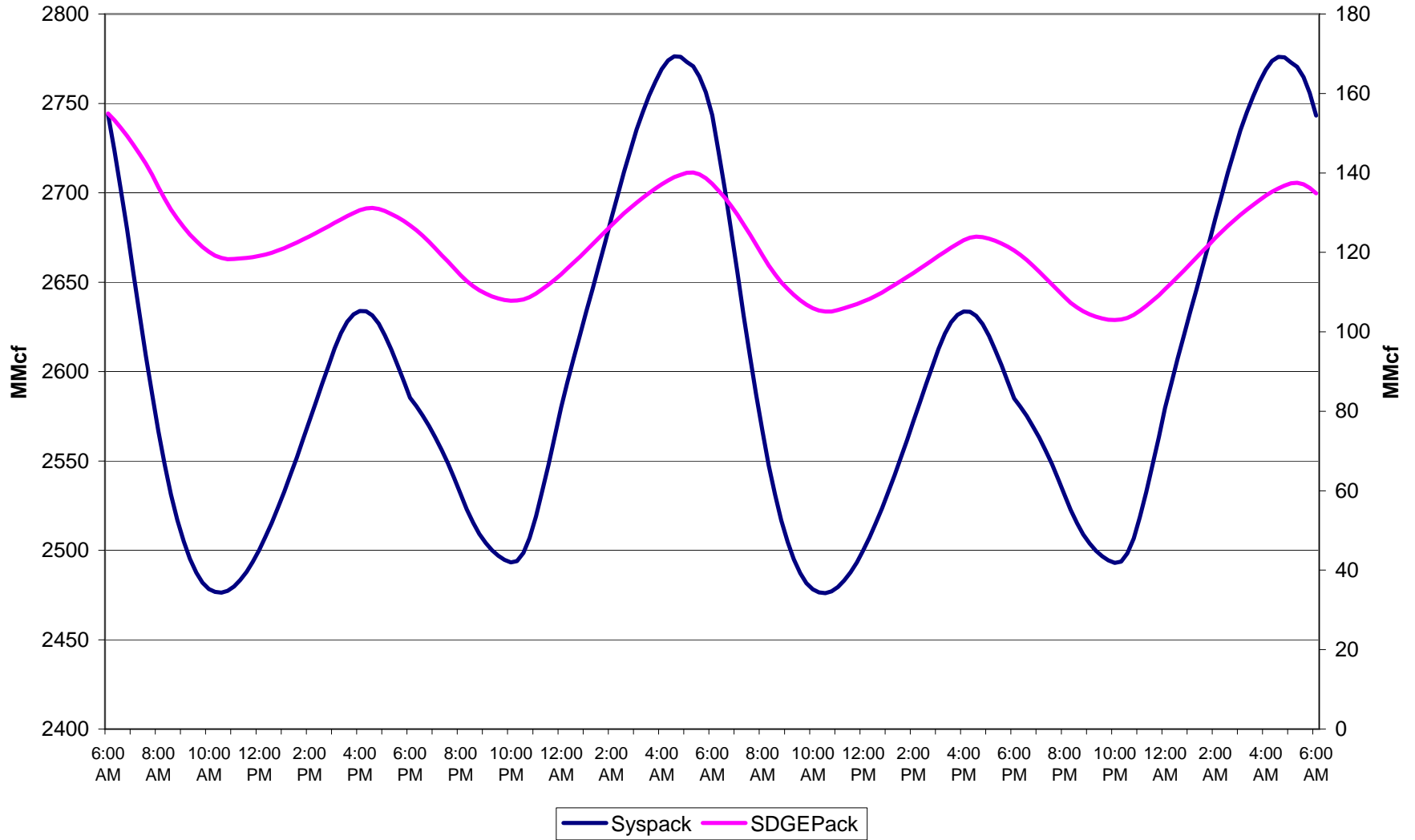
SJV Loading Forecast summary			
Year	Core	Non-core	Total
2009	116	42	158
2010	119	42	161
2011	122	42	164
2012	125	42	167
2013	129	42	171
2014	132	42	174
2015	135	42	177
2016	139	42	181
2017	142	42	184
2018	146	42	188
2019	149	42	191
2020	153	42	195
2021	157	42	199
2022	161	42	203
2023	165	42	207

# 1-in-10 Full System, 6 Bcf Sendout

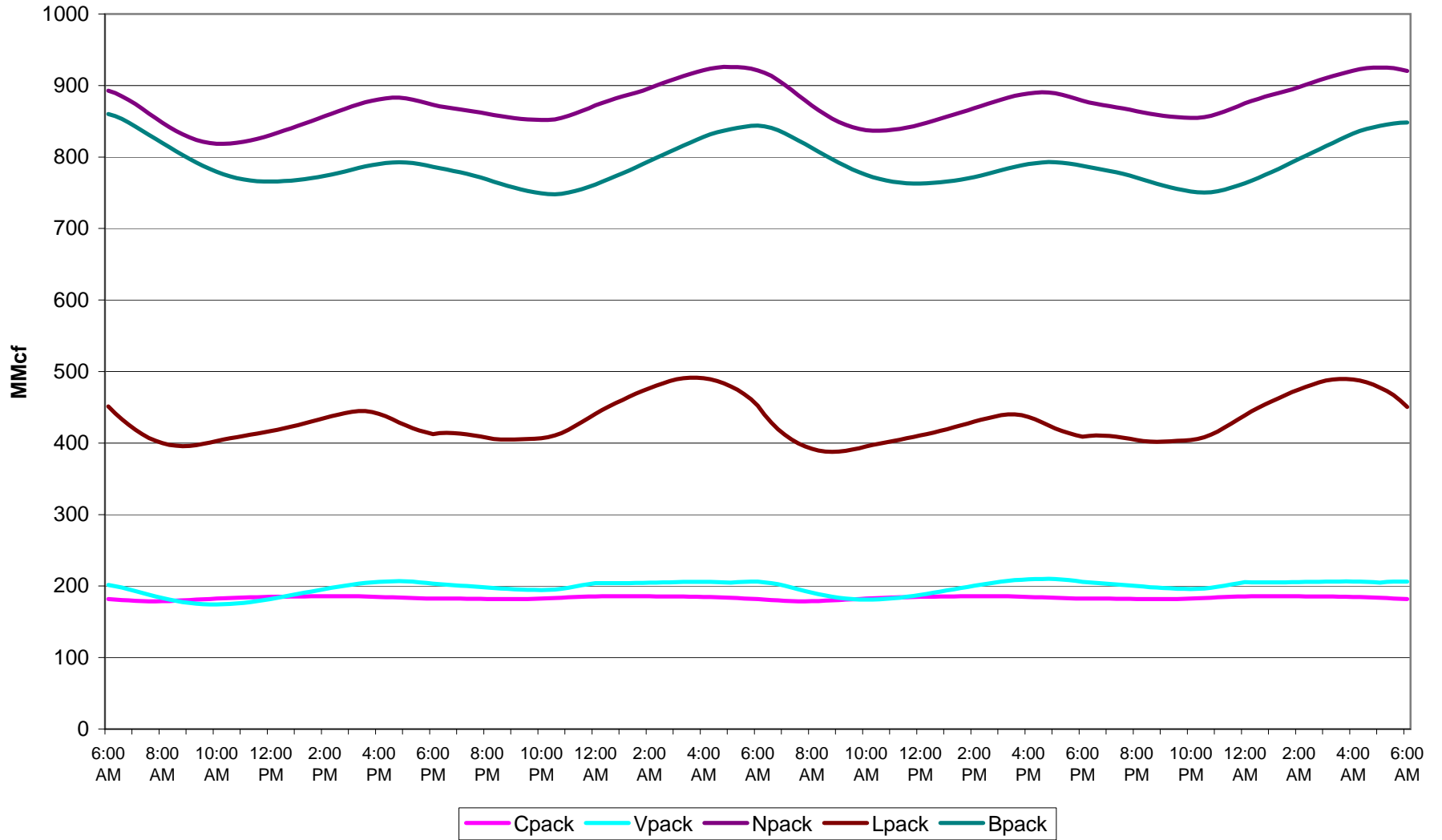
## Loads vs Supplies



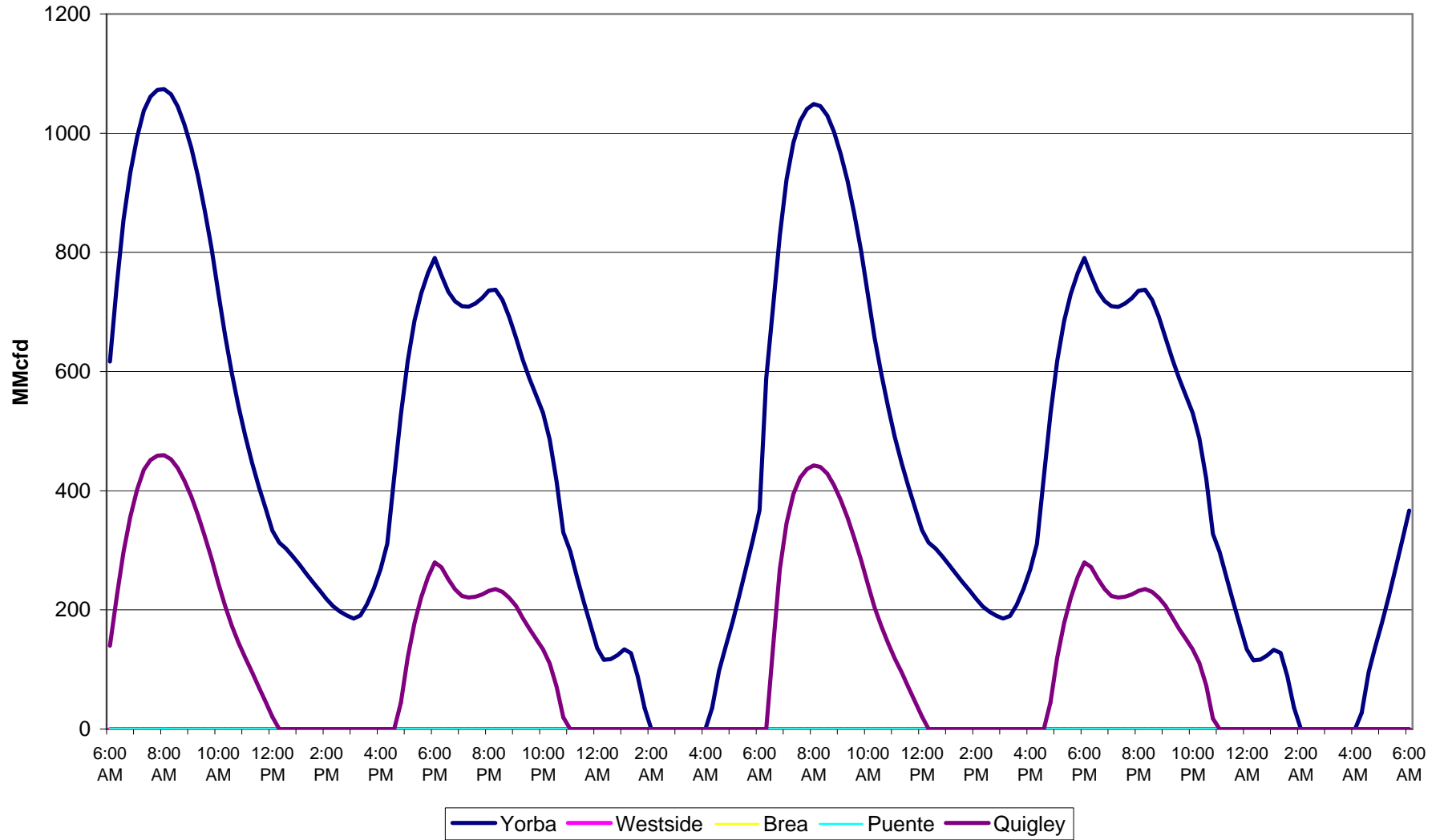
**1-in-10 Full System, 6 Bcf Sendout**  
System Pack & SDGE Pack



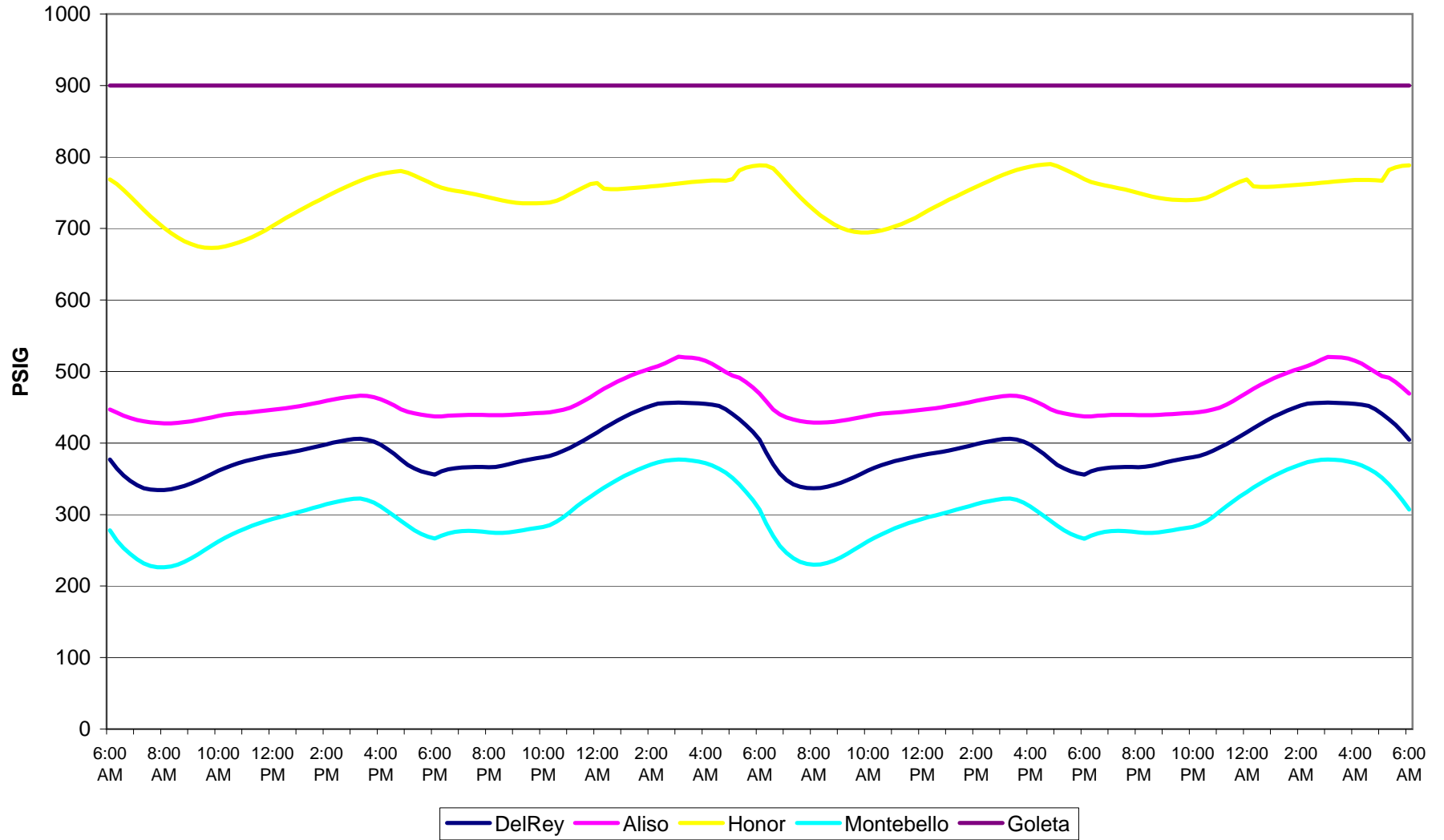
**1-in-10 Full System, 6 Bcf Sendout**  
Various Packs



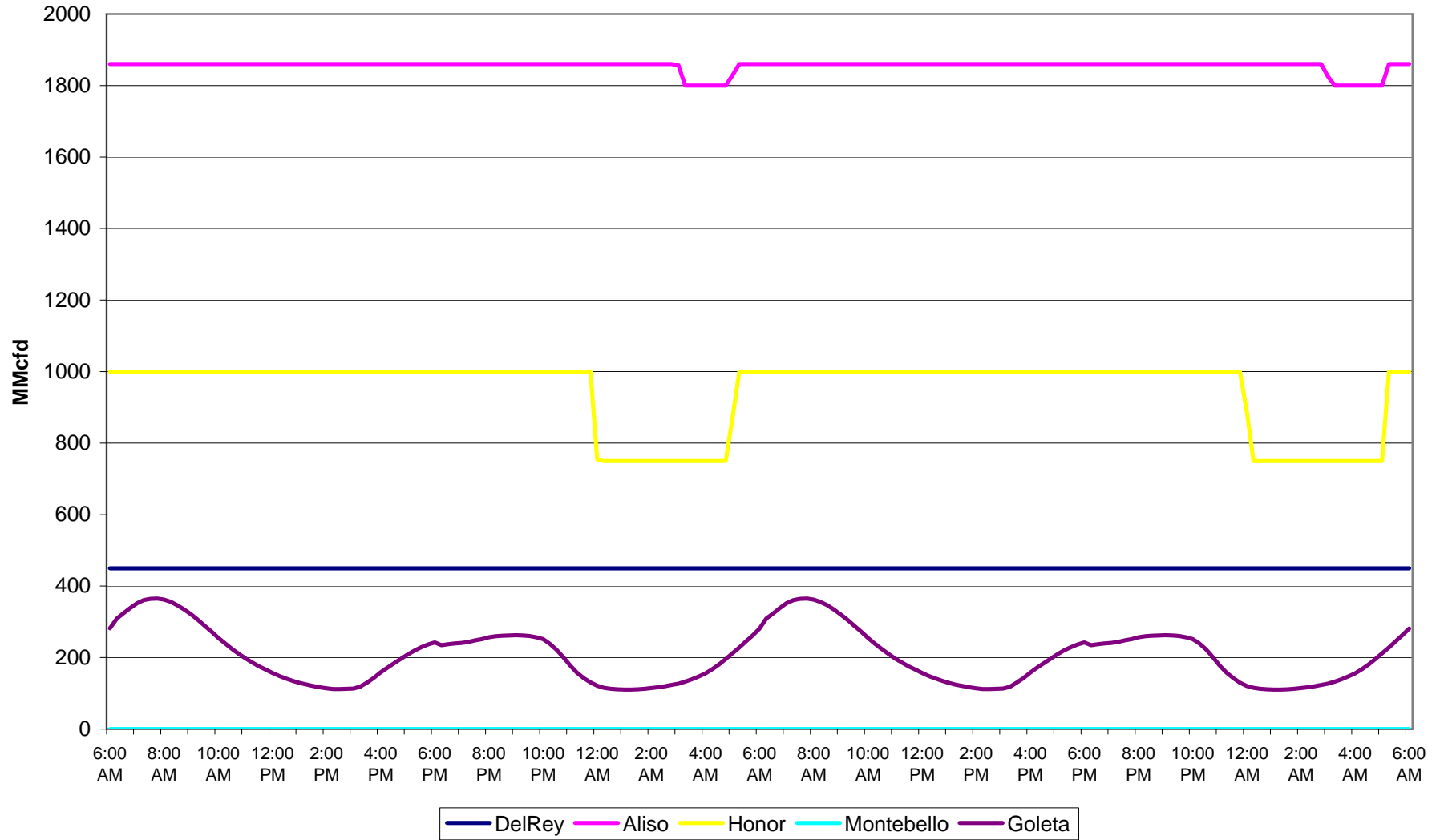
### 1-in-10 Full System, 6 Bcf Sendout City Gate Flows



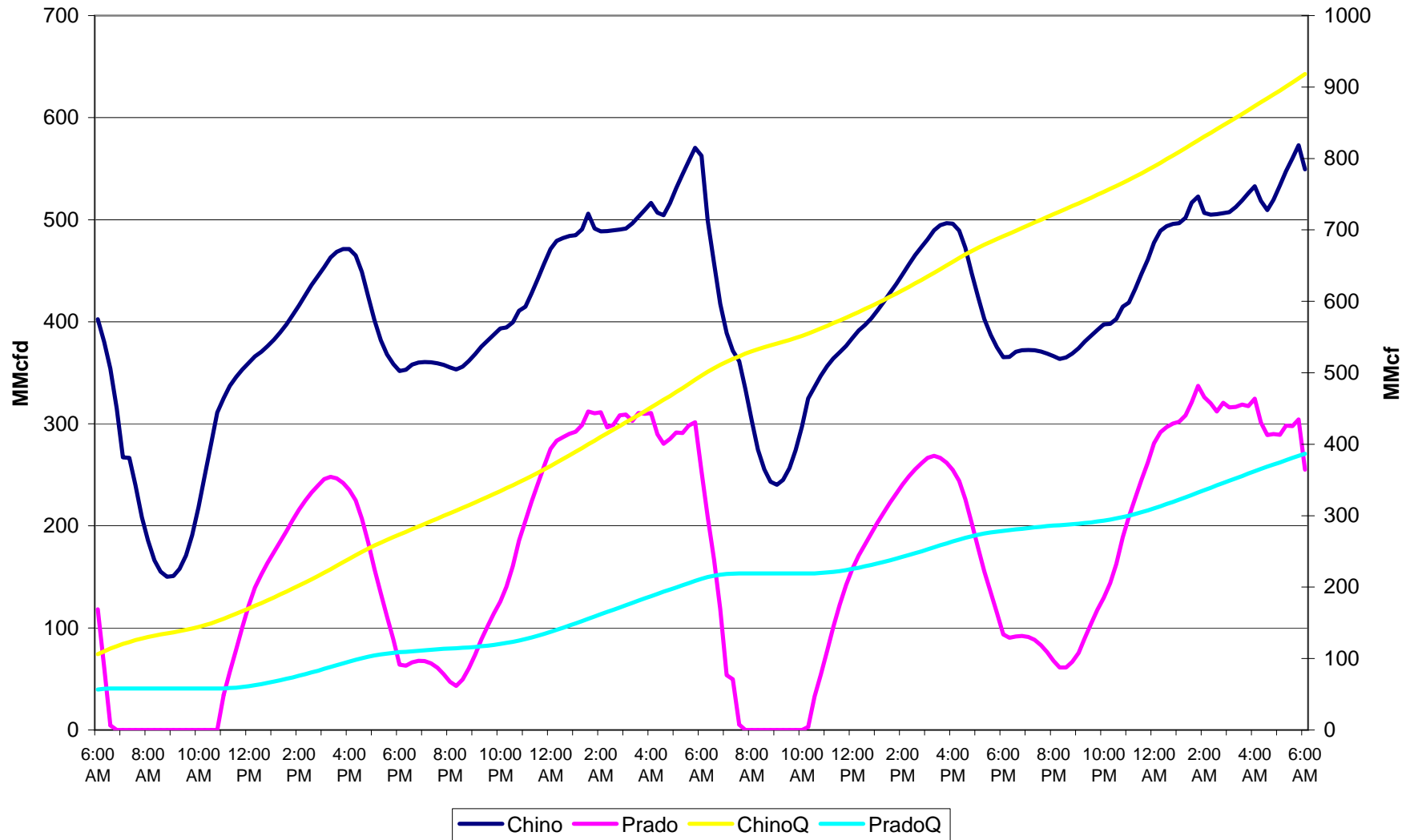
### 1-in-10 Full System, 6 Bcf Sendout Storage Field Pressures



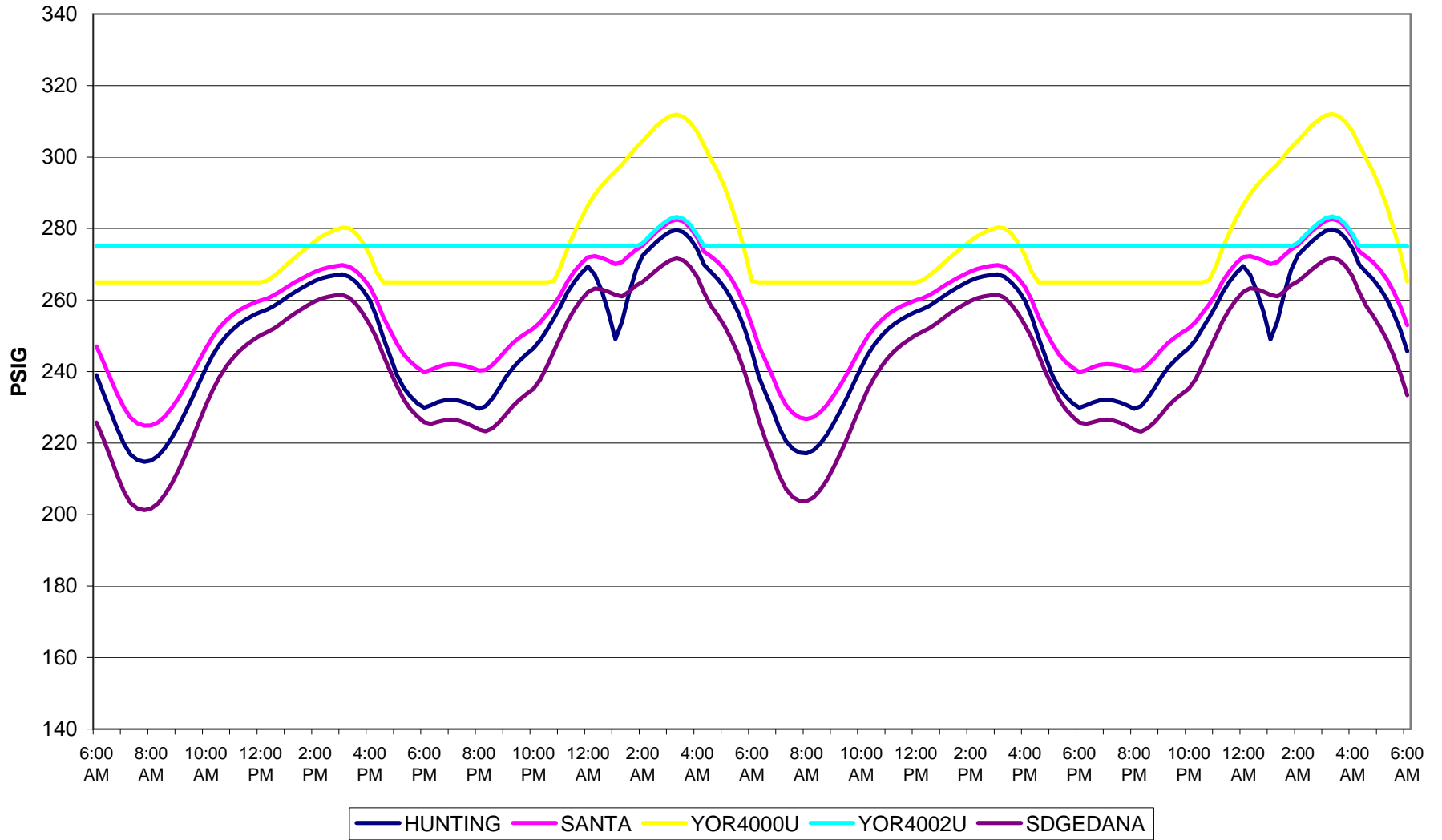
### 1-in-10 Full System, 6 Bcf Sendout Storage Field Flows



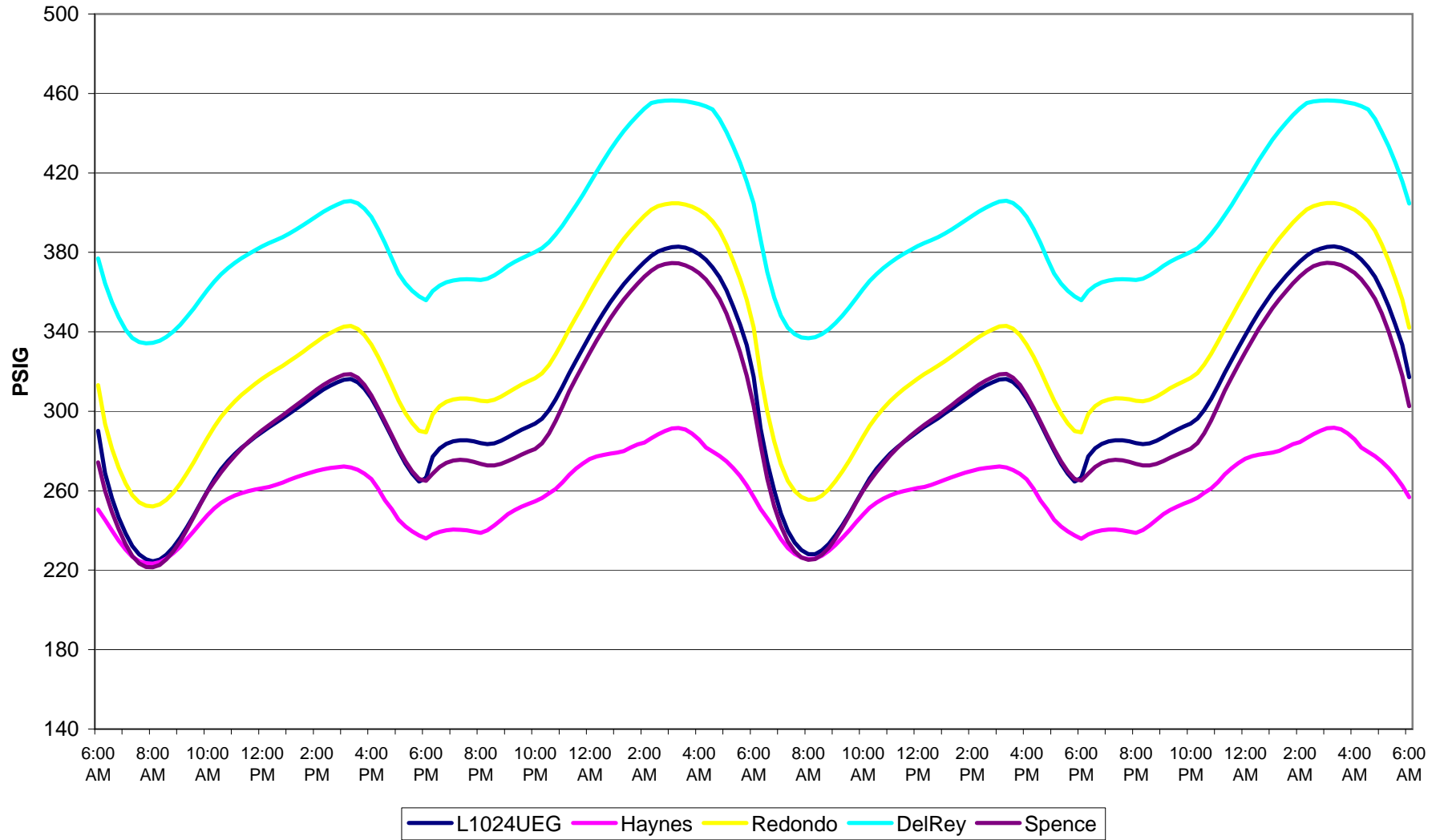
### 1-in-10 Full System, 6 Bcf Sendout Chino and Prado Flows and Totals



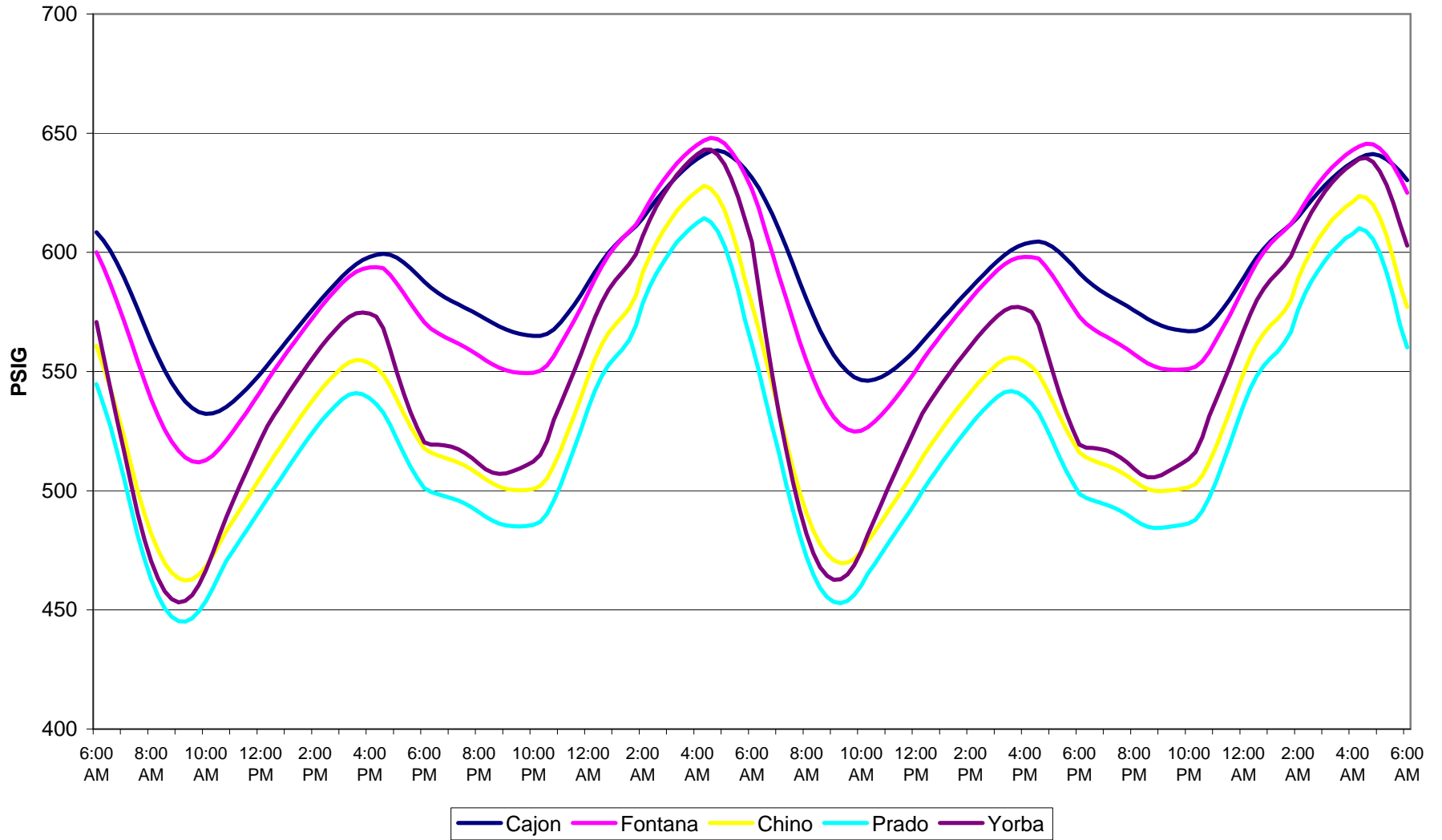
**1-in-10 Full System, 6 Bcf Sendout**  
Orange County Pressures



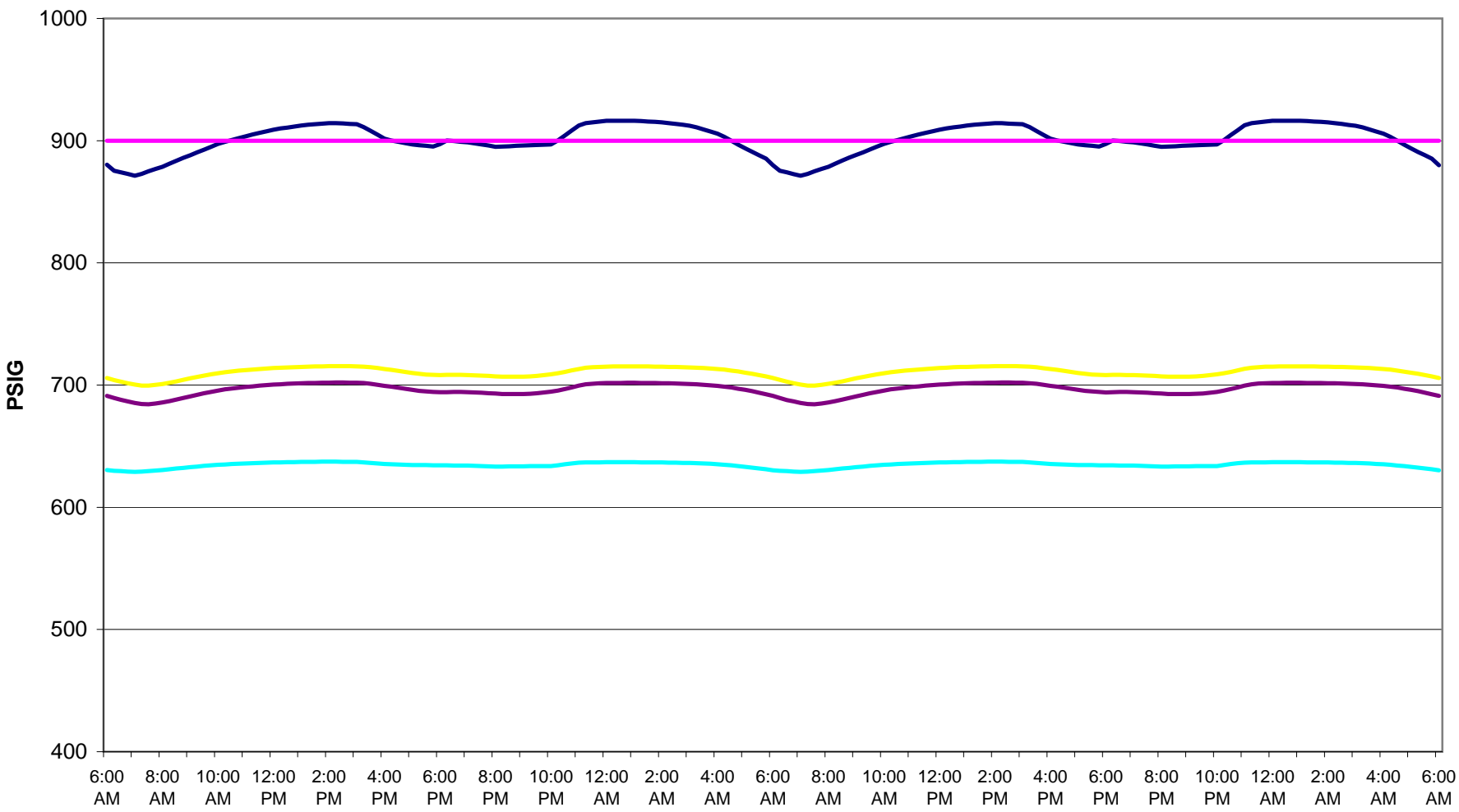
### 1-in-10 Full System, 6 Bcf Sendout Loop Pressures



**1-in-10 Full System, 6 Bcf Sendout**  
Line 4000 Pressures

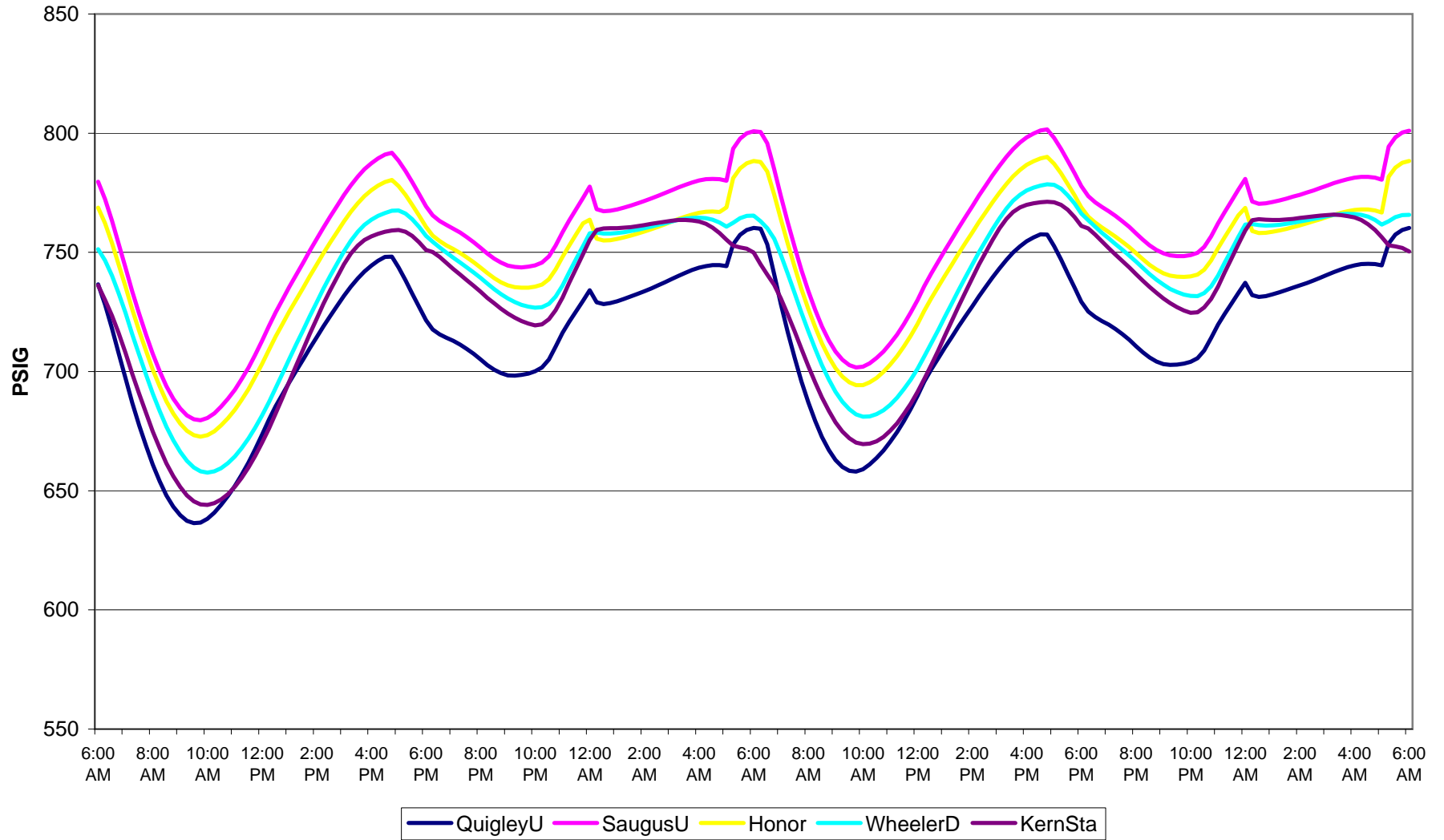


### 1-in-10 Full System, 6 Bcf Sendout Coastal Pressures

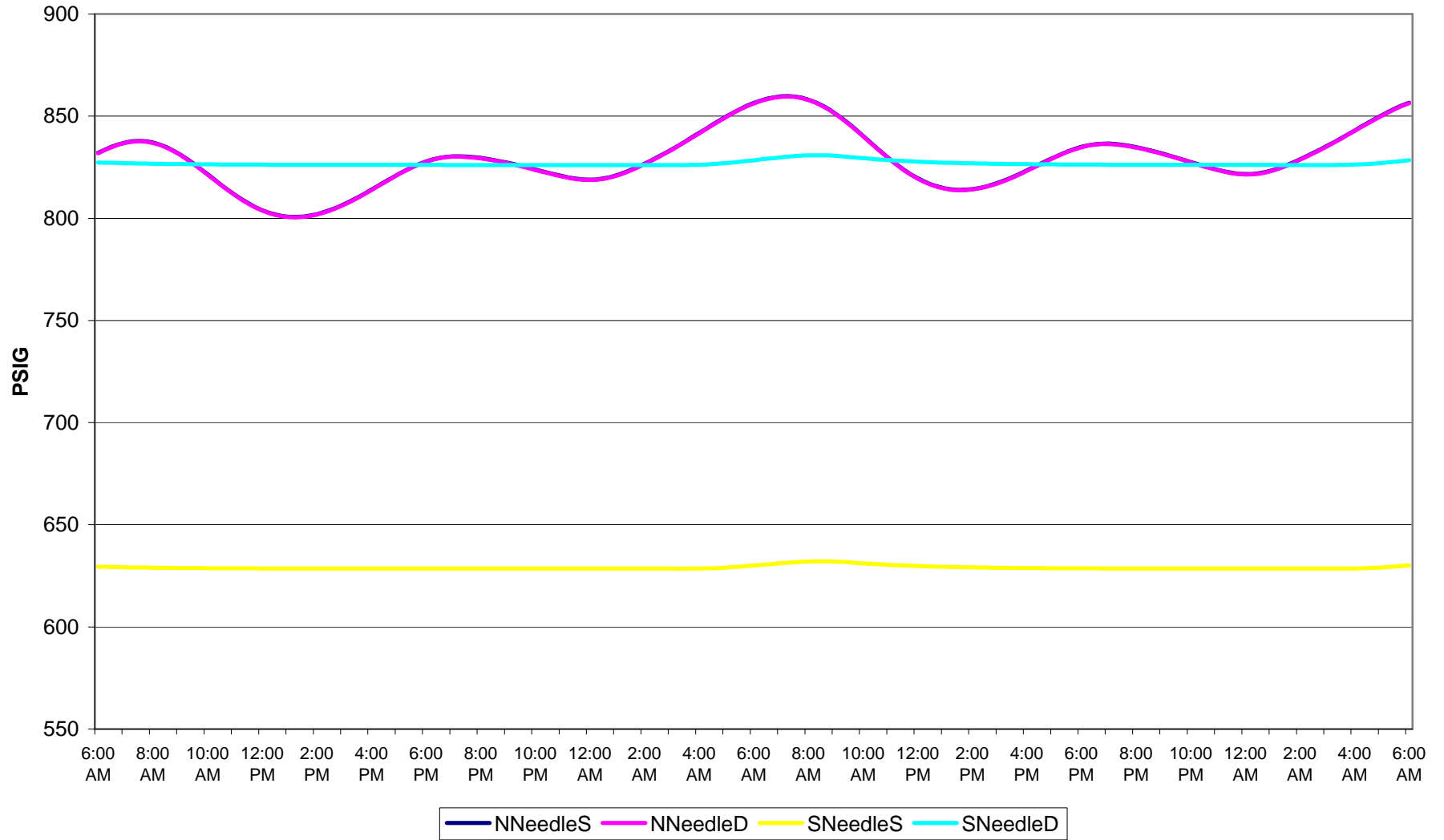


— Gaviota — Goleta — Center Road — Westside 404 — Westside 406

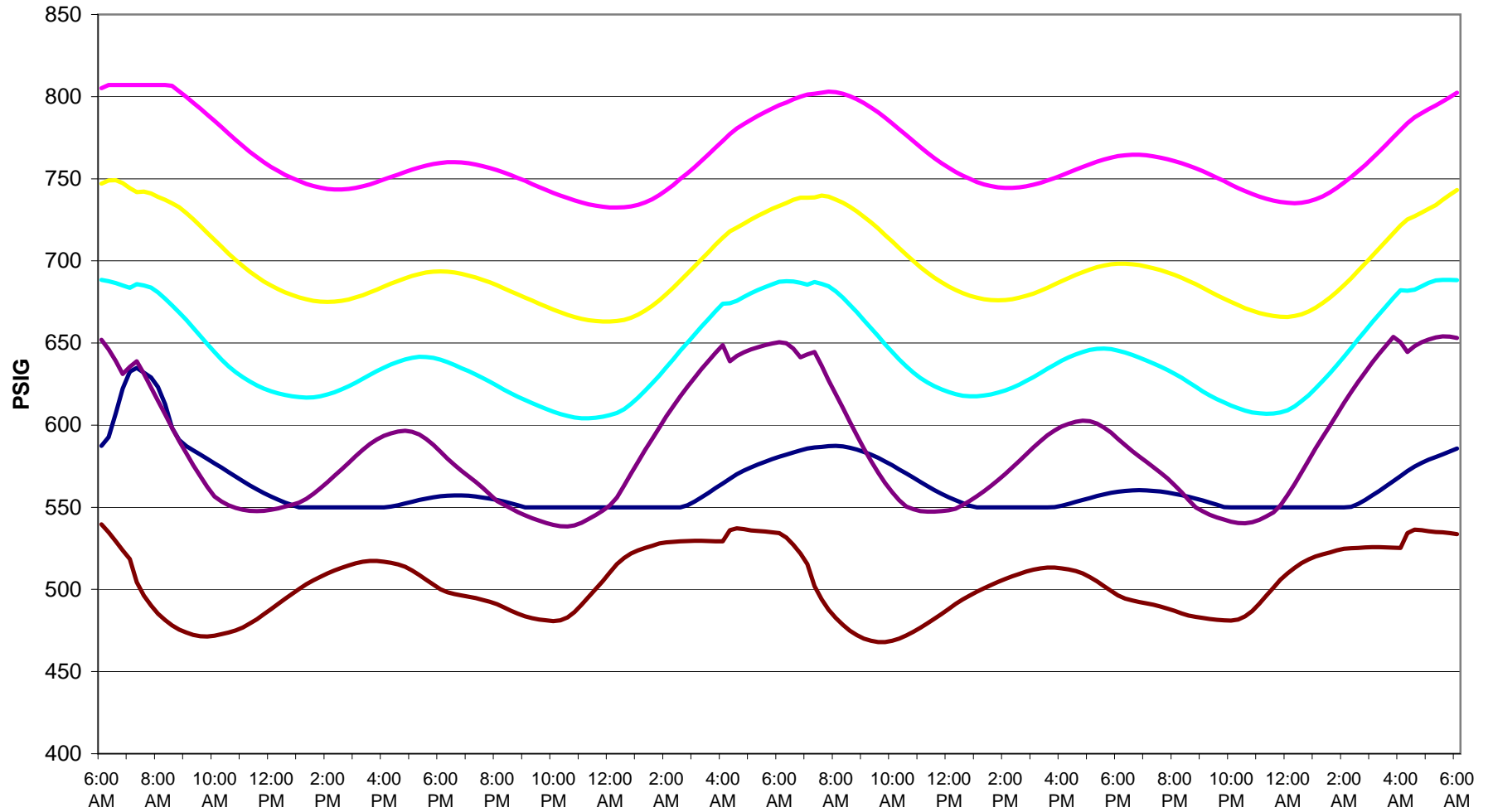
**1-in-10 Full System, 6 Bcf Sendout**  
San Joaquin Valley Pressures



### 1-in-10 Full System, 6 Bcf Sendout Needles Pressures

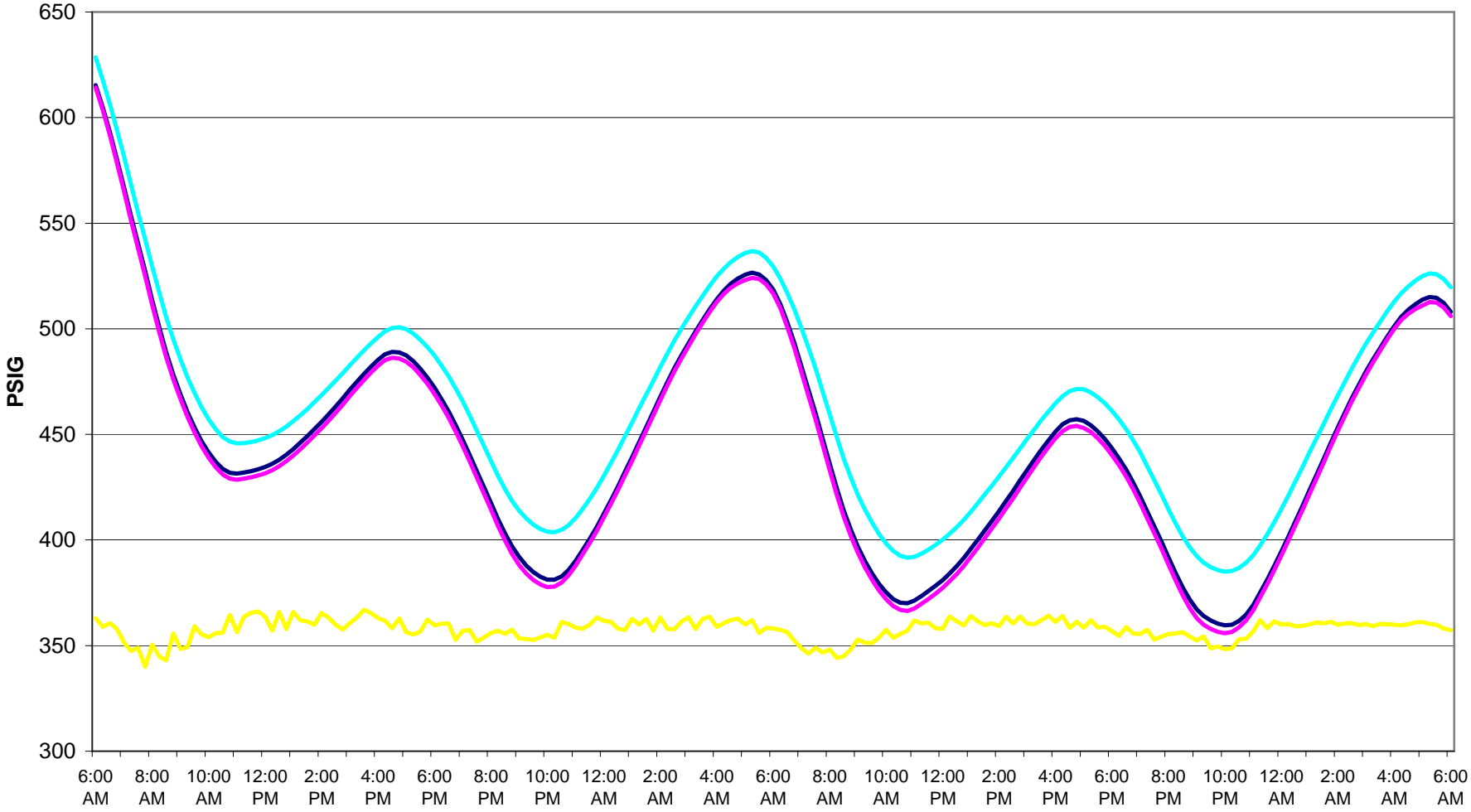


**1-in-10 Full System, 6 Bcf Sendout**  
Blythe Pressures



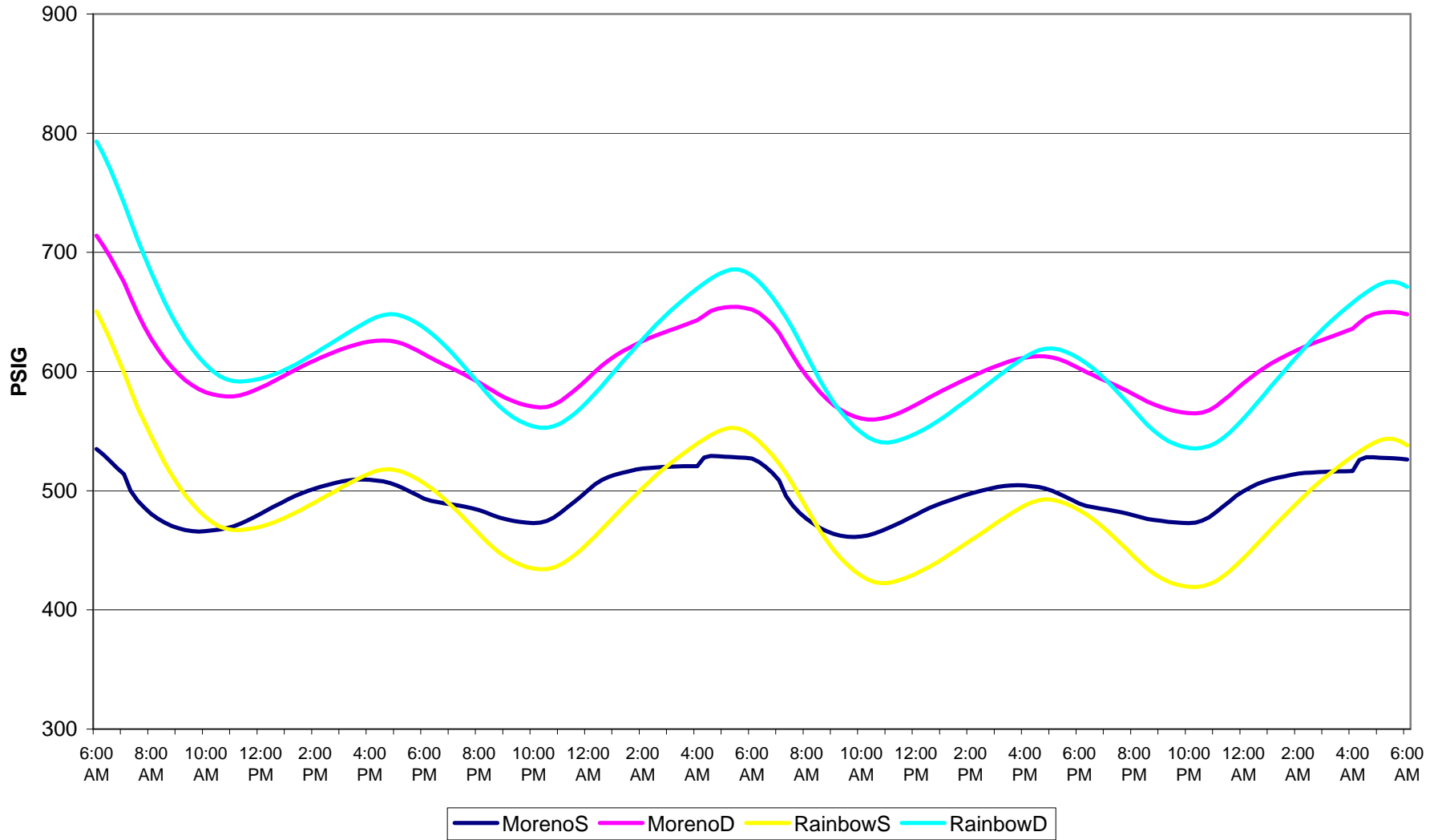
— BlytheS — BlytheD — DesertD — CactusD — WhiteU — Mor2000U

**1-in-10 Full System, 6 Bcf Sendout**  
San Diego Pressures



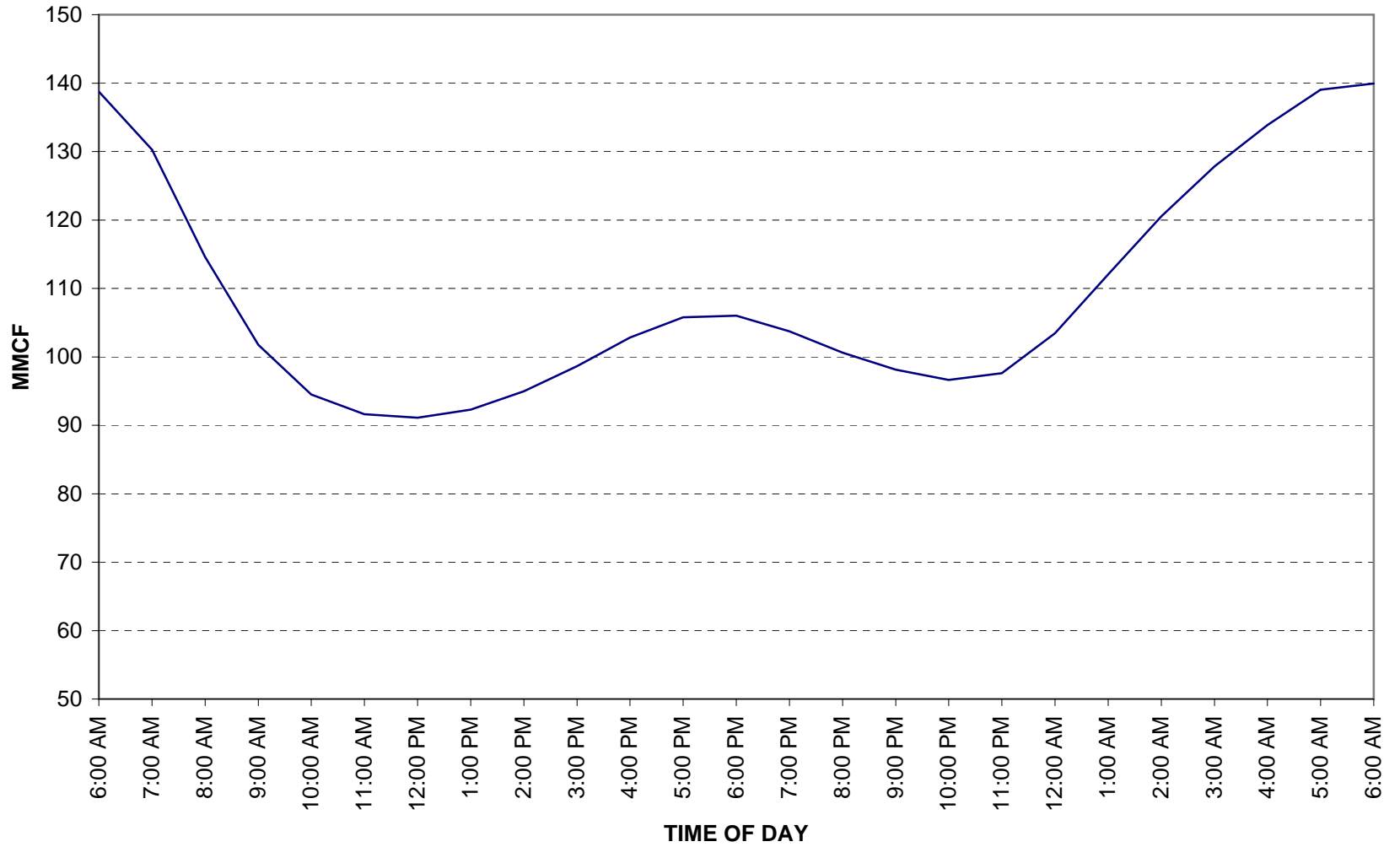
— LaMesa — Mesa — SoBay — Escondido

**1-in-10 Full System, 6 Bcf Sendout**  
Moreno and Rainbow Pressures



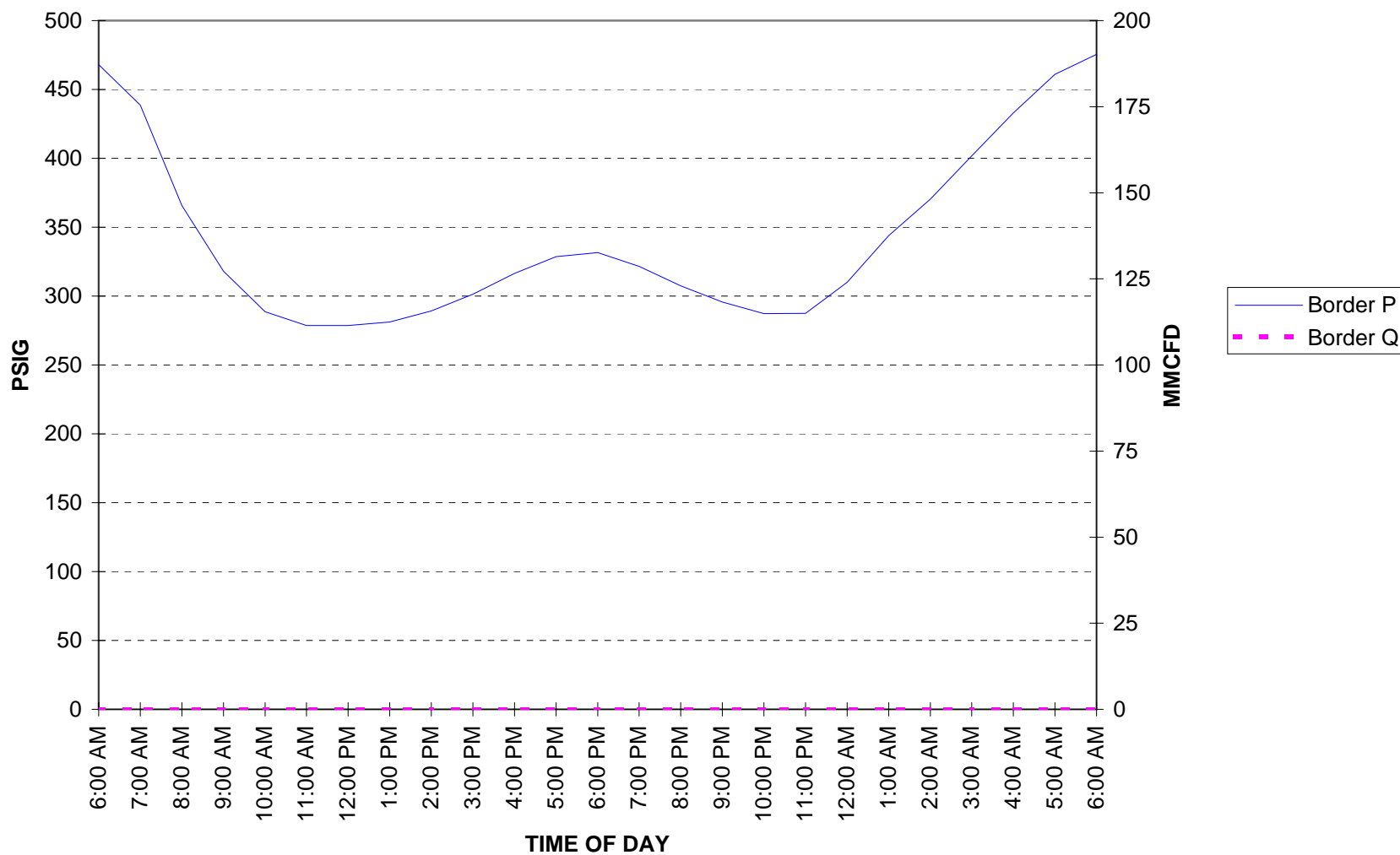
### SDG&E SYSTEM PACK

SDG&E Winter=650 MMcfd (December 2019), RDOM= 0  
EG1=68 MMcfd, EG2=65 MMcfd, EG3=50 MMcfd, RBC=256 MMcfd



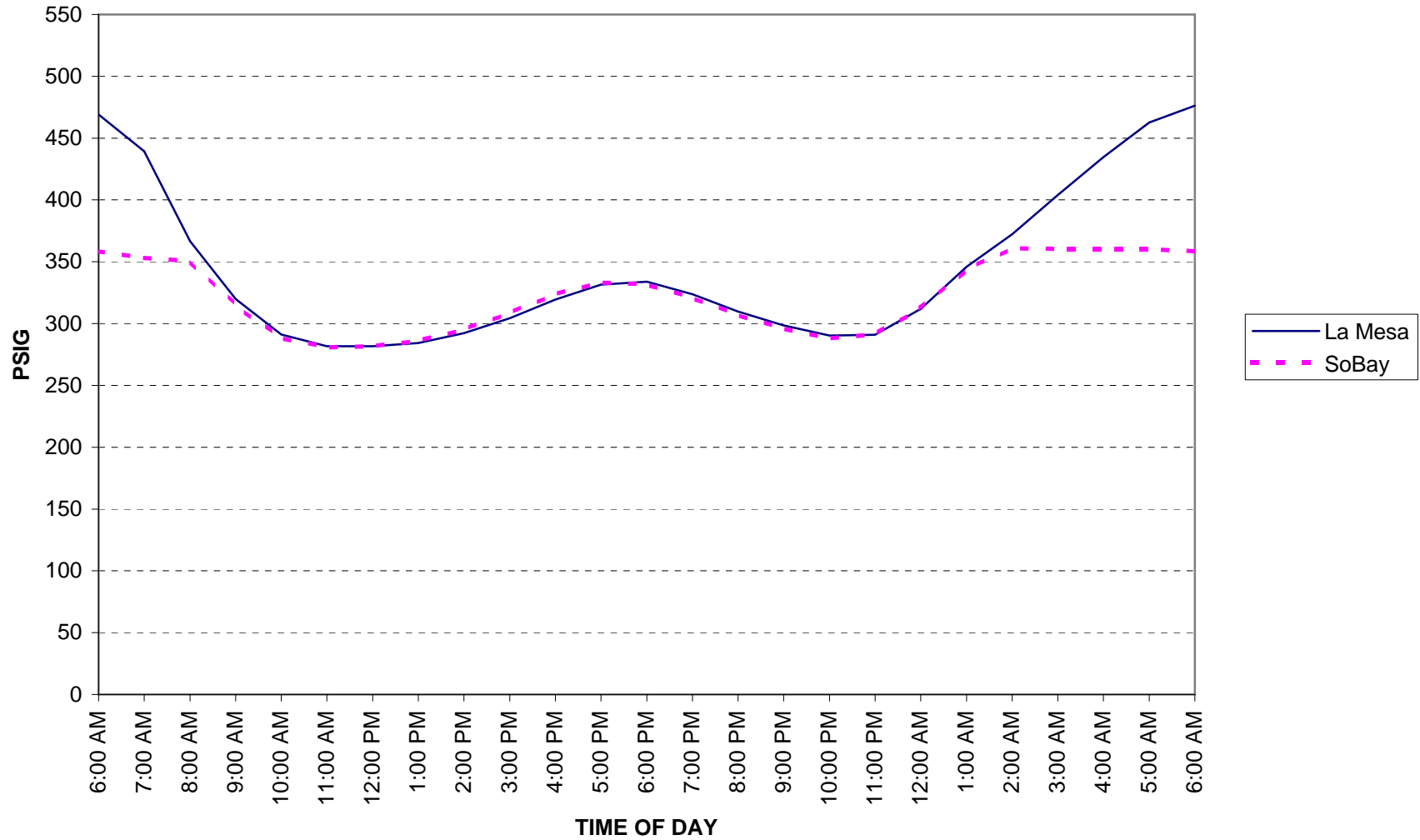
### BORDER PRESSURE AND FLOW

SDG&E Winter=650 MMcfd (December 2019), RDOM= 0  
EG1=68 MMcfd, EG2=65 MMcfd, EG3=50 MMcfd, RBC=256 MMcfd



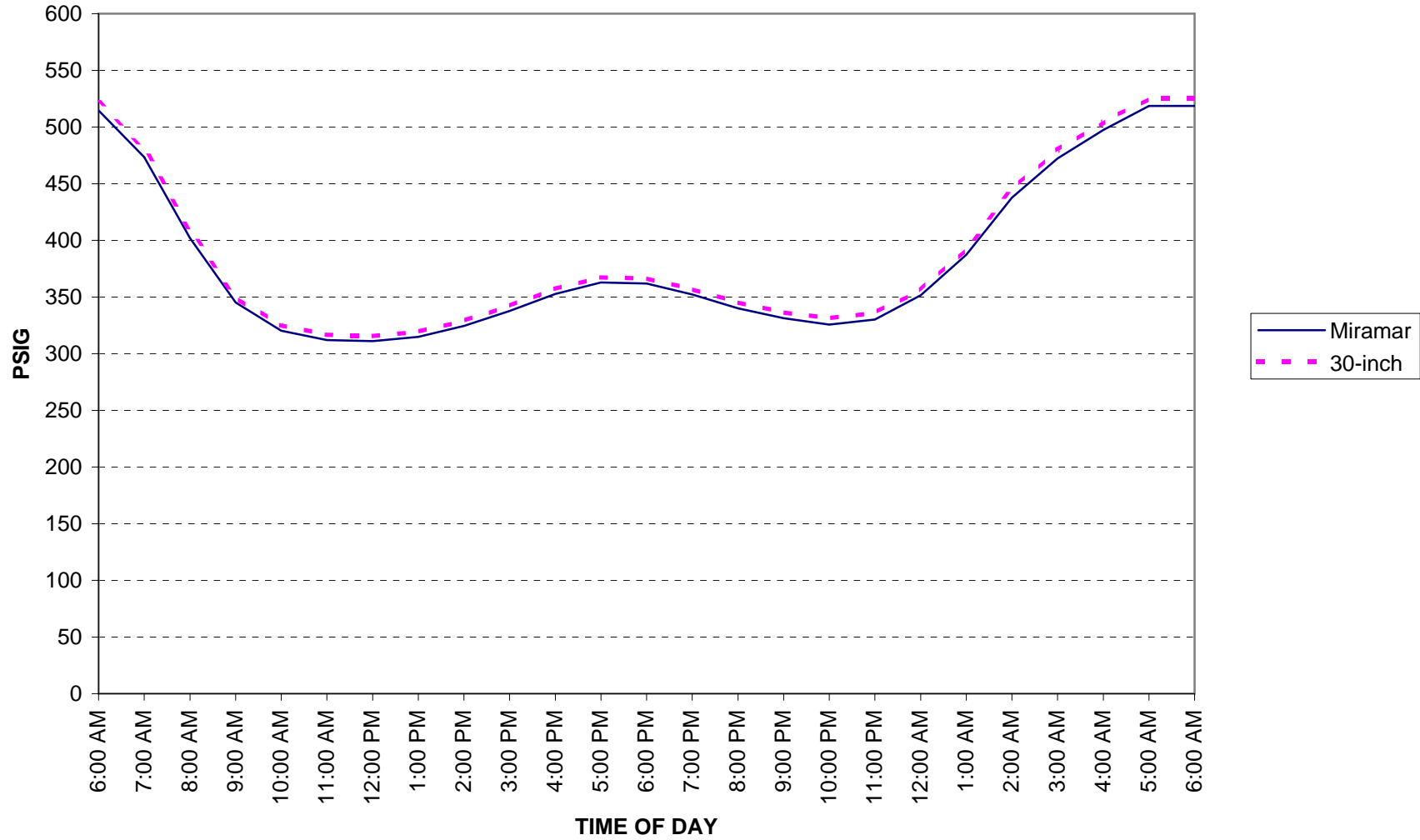
### SYSTEM PRESSURES

SDG&E Winter=650 MMcfd (December 2019), RDOM= 0  
EG1=68 MMcfd, EG2=65 MMcfd, EG3=50 MMcfd, RBC=256 MMcfd



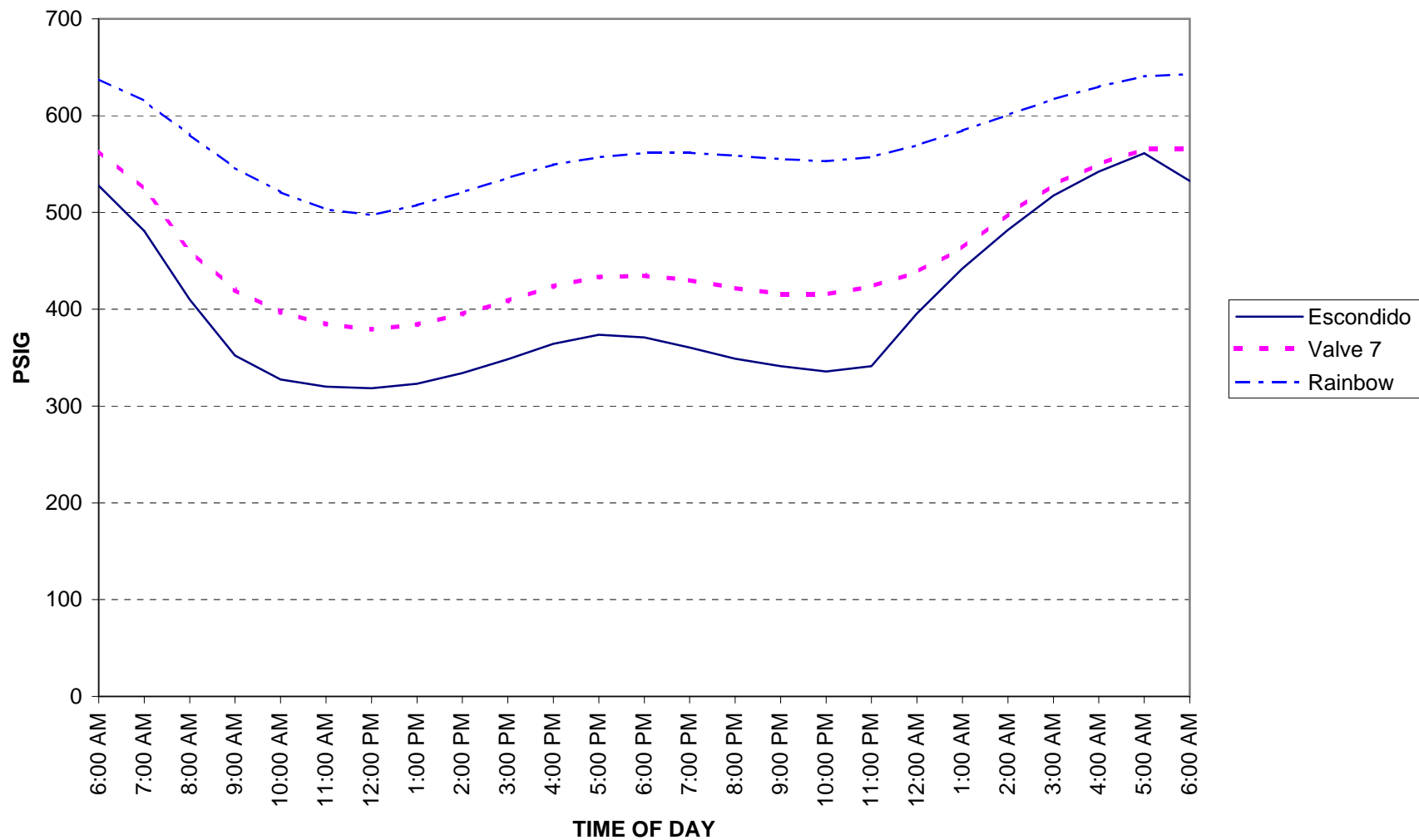
### SYSTEM PRESSURES

SDG&E Winter=650 MMcfd (December 2019), RDOM= 0  
EG1=68 MMcfd, EG2=65 MMcfd, EG3=50 MMcfd, RBC=256 MMcfd



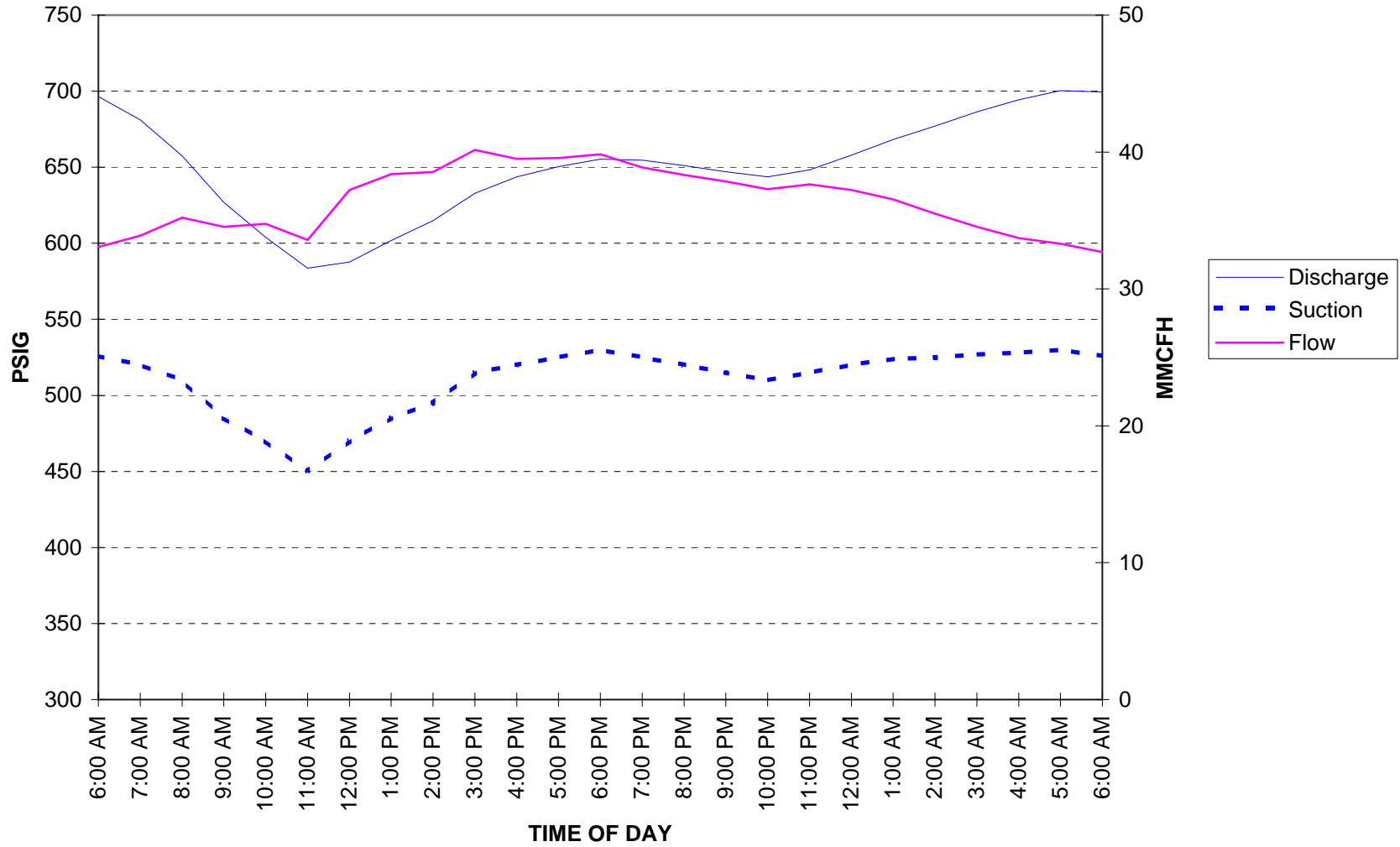
### SYSTEM PRESSURES

SDG&E Winter=650 MMcfd (December 2019), RDOM= 0  
EG1=68 MMcfd, EG2=65 MMcfd, EG3=50 MMcfd, RBC=256 MMcfd



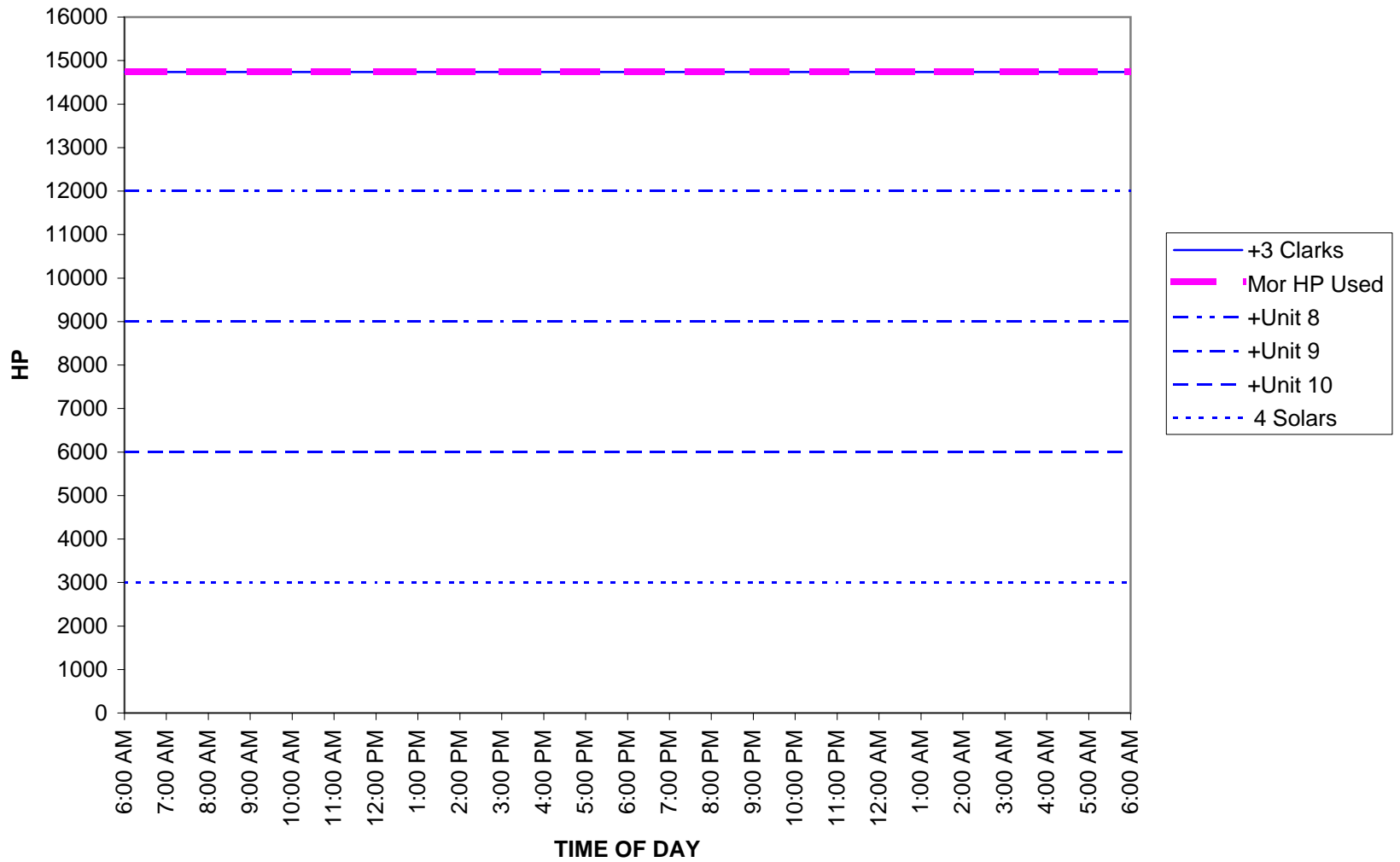
### MORENO PRESSURE AND FLOW

SDG&E Winter=650 MMcfd (December 2019), RDOM= 0  
EG1=68 MMcfd, EG2=65 MMcfd, EG3=50 MMcfd, RBC=256 MMcfd



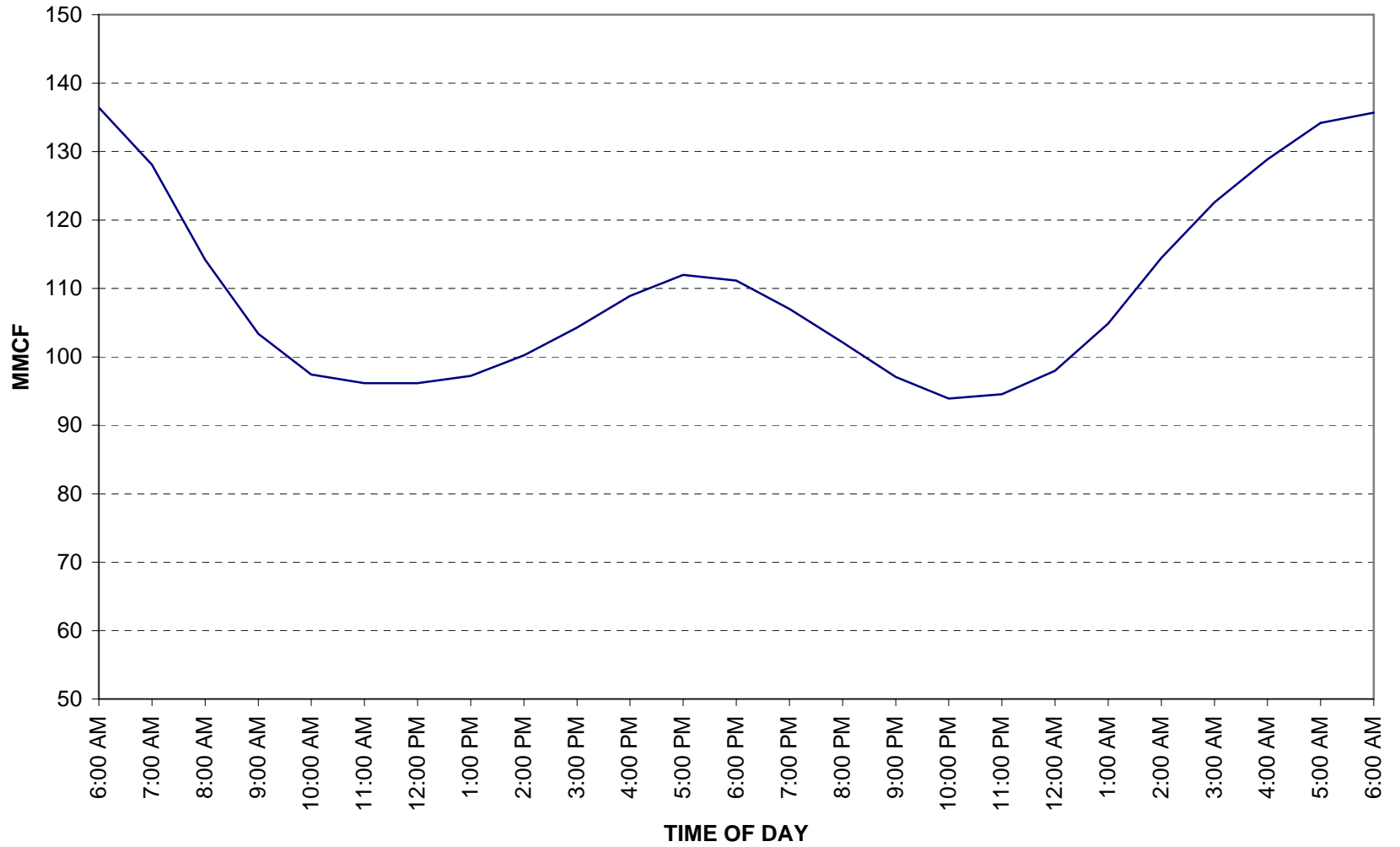
# MORENO HORSEPOWER

SDG&E Winter=650 MMcfd (December 2019), RDOM= 0  
EG1=68 MMcfd, EG2=65 MMcfd, EG3=50 MMcfd, RBC=256 MMcfd



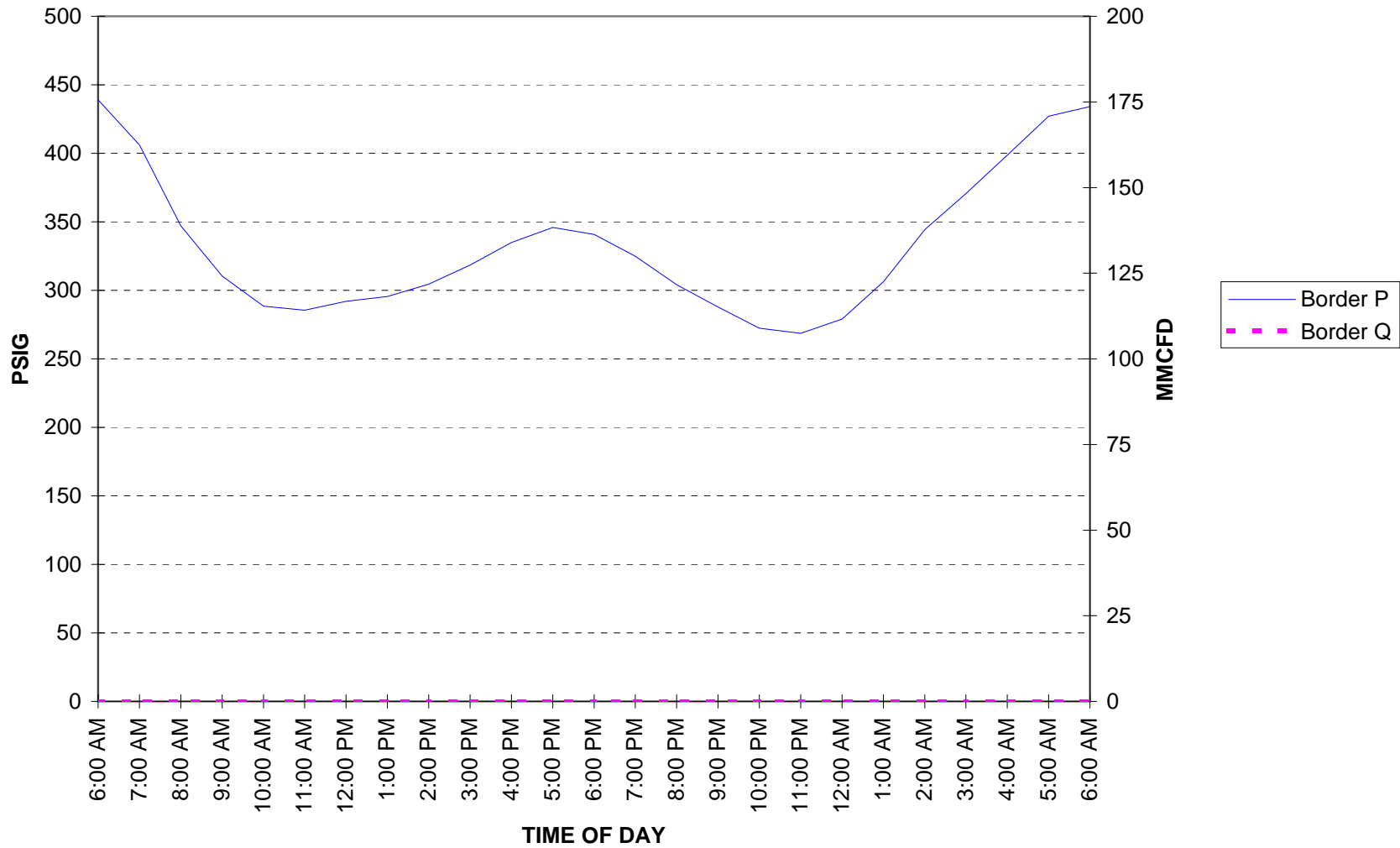
### SDG&E SYSTEM PACK

SDG&E Winter=675 MMcfd (December 2009), RDOM = 0  
EG1=58 MMcfd, EG2=73 MMcfd, EG3=37 MMcfd, RBC=195 MMcfd



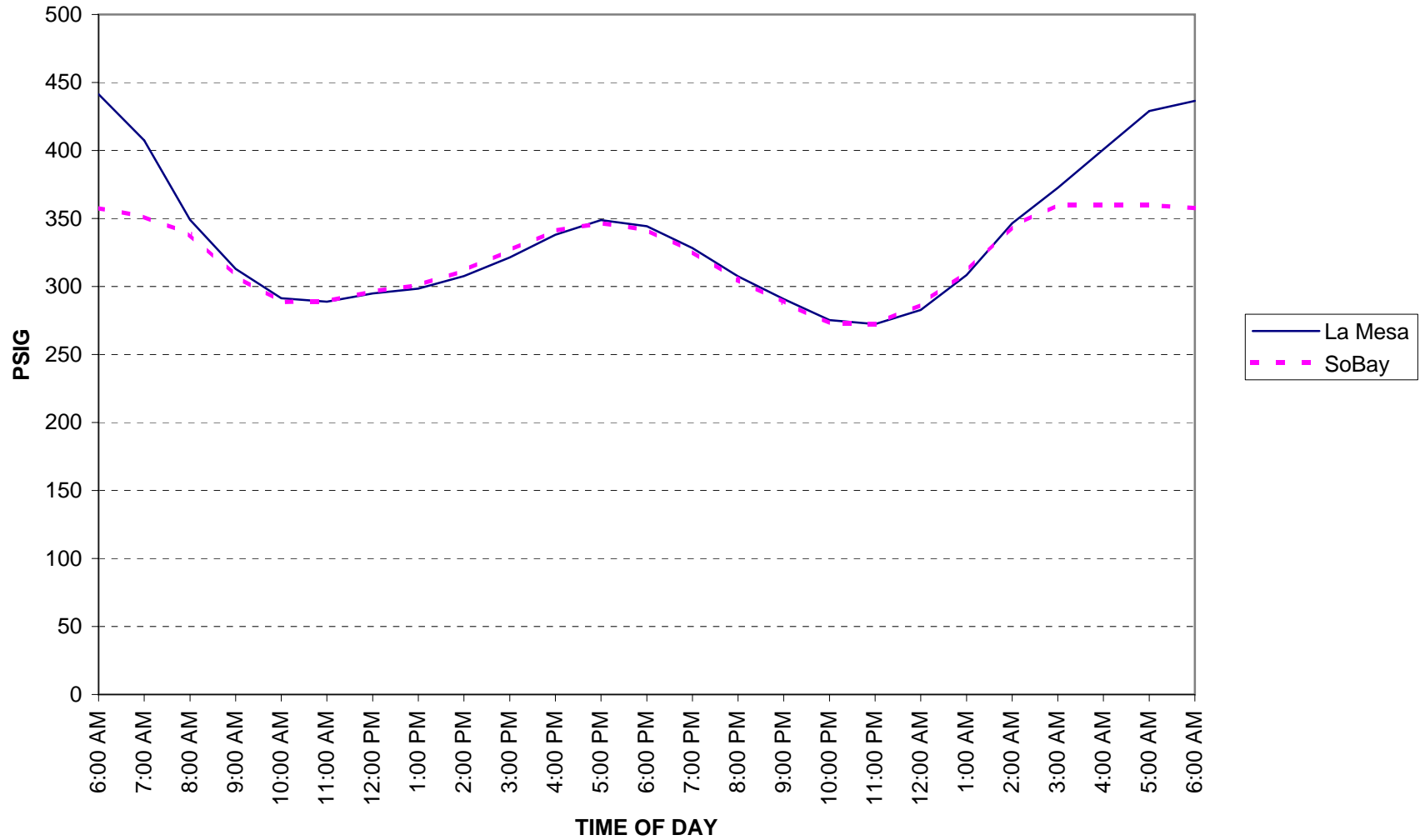
### BORDER PRESSURE AND FLOW

SDG&E Winter=675 MMcfd (December 2009), RDOM = 0  
EG1=58 MMcfd, EG2=73 MMcfd, EG3=37 MMcfd, RBC=195 MMcfd



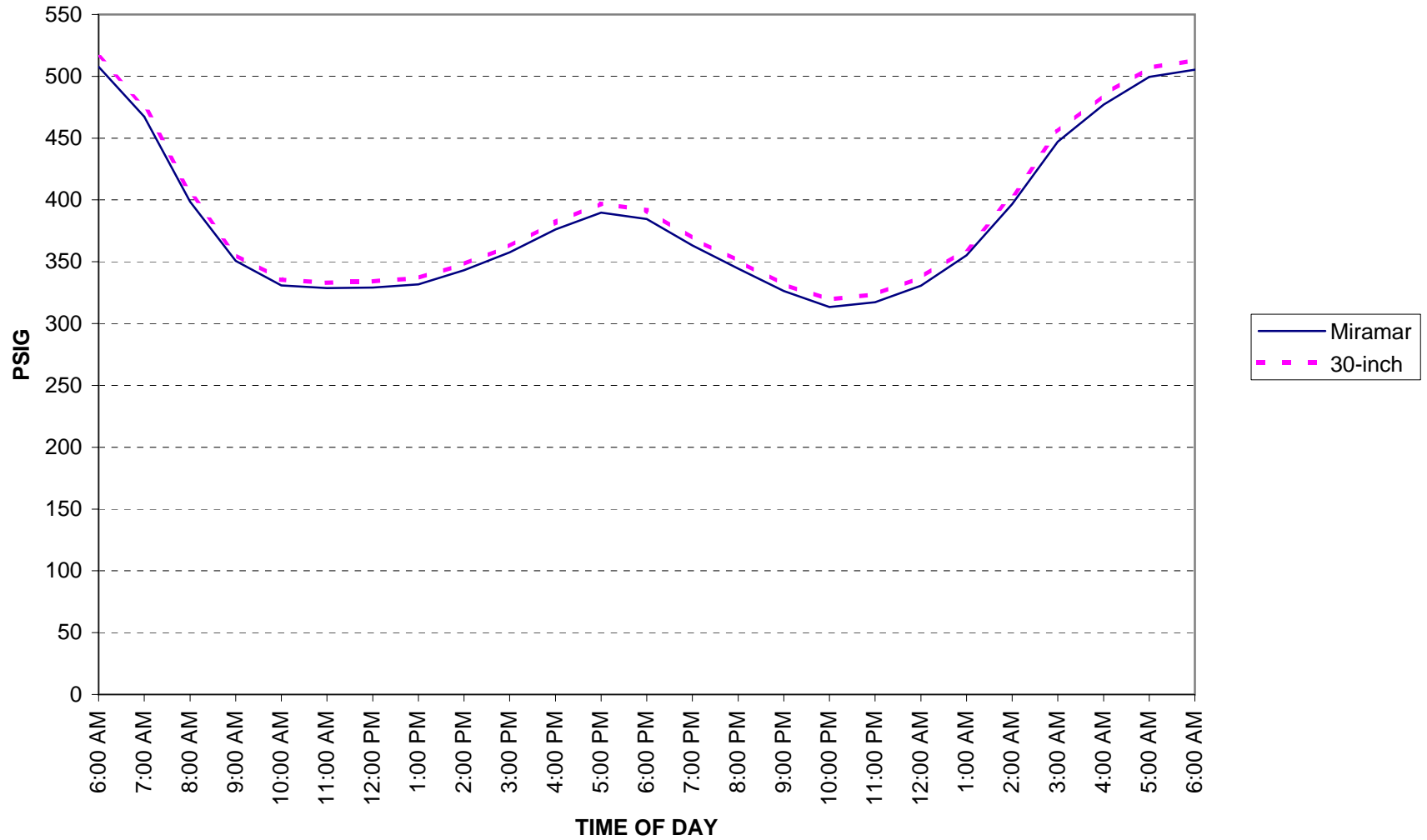
### SYSTEM PRESSURES

SDG&E Winter=675 MMcfd (December 2009), RDOM = 0  
EG1=58 MMcfd, EG2=73 MMcfd, EG3=37 MMcfd, RBC=195 MMcfd



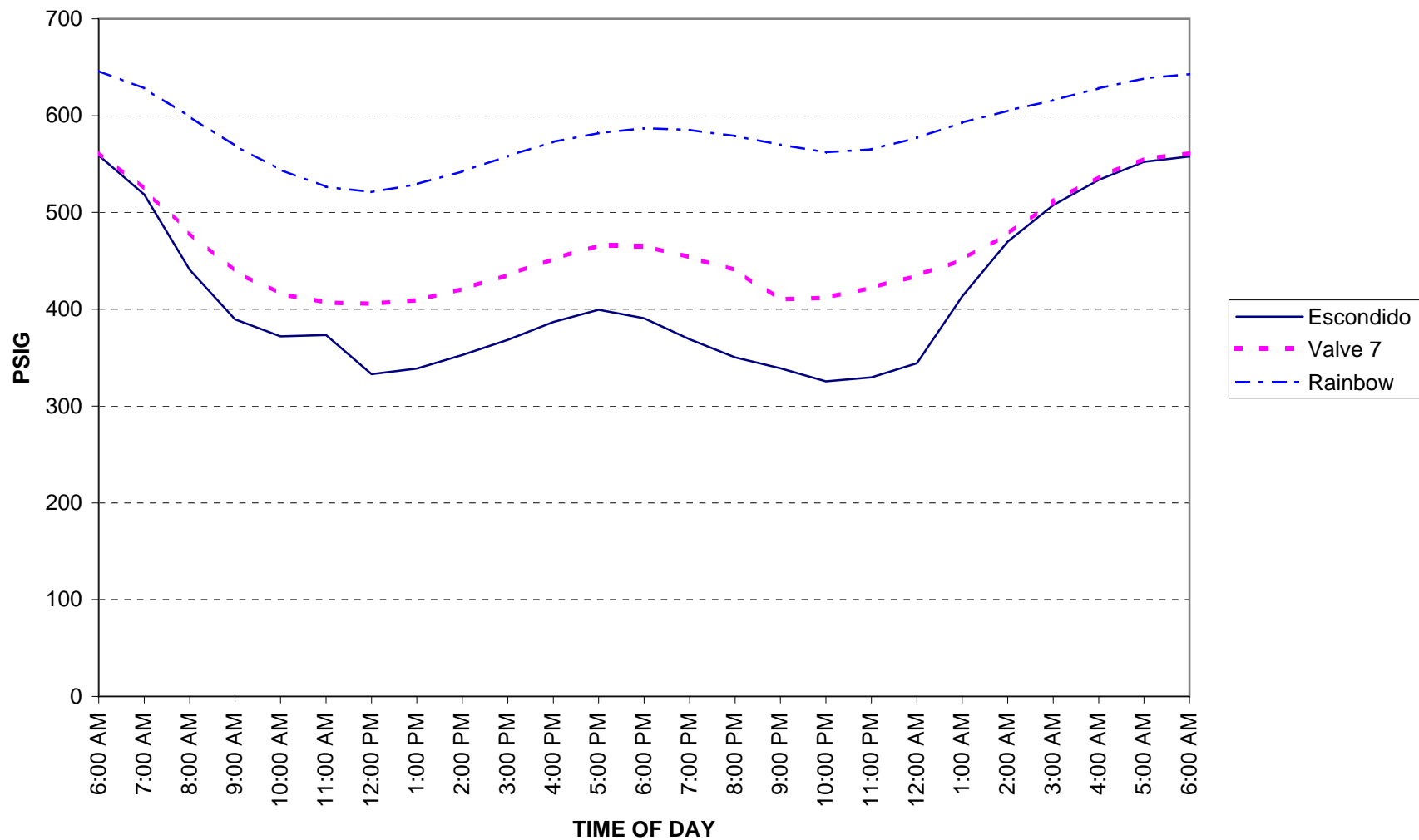
### SYSTEM PRESSURES

SDG&E Winter=675 MMcfd (December 2009), RDOM = 0  
EG1=58 MMcfd, EG2=73 MMcfd, EG3=37 MMcfd, RBC=195 MMcfd

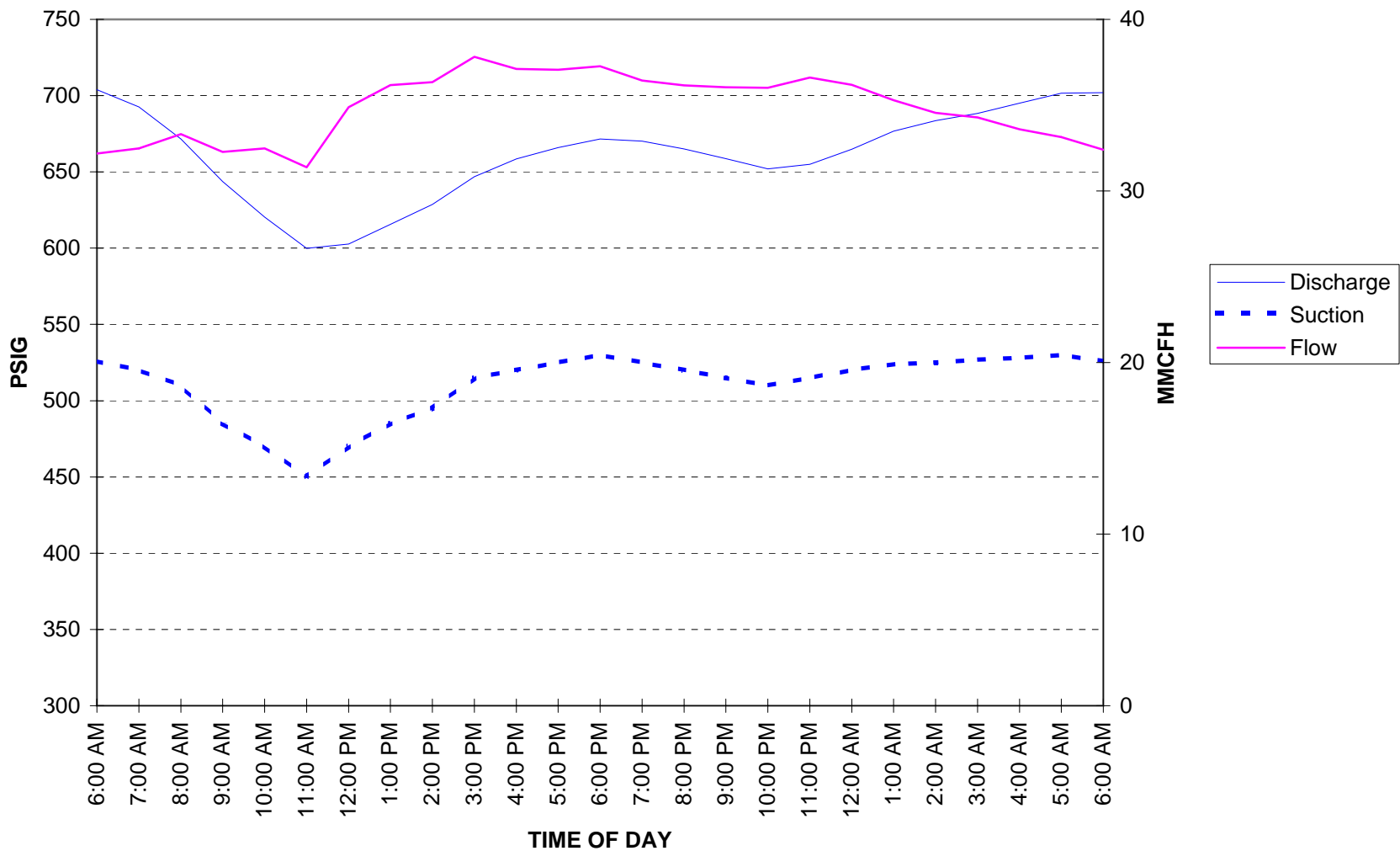


### SYSTEM PRESSURES

SDG&E Winter=675 MMcfd (December 2009), RDOM = 0  
EG1=58 MMcfd, EG2=73 MMcfd, EG3=37 MMcfd, RBC=195 MMcfd

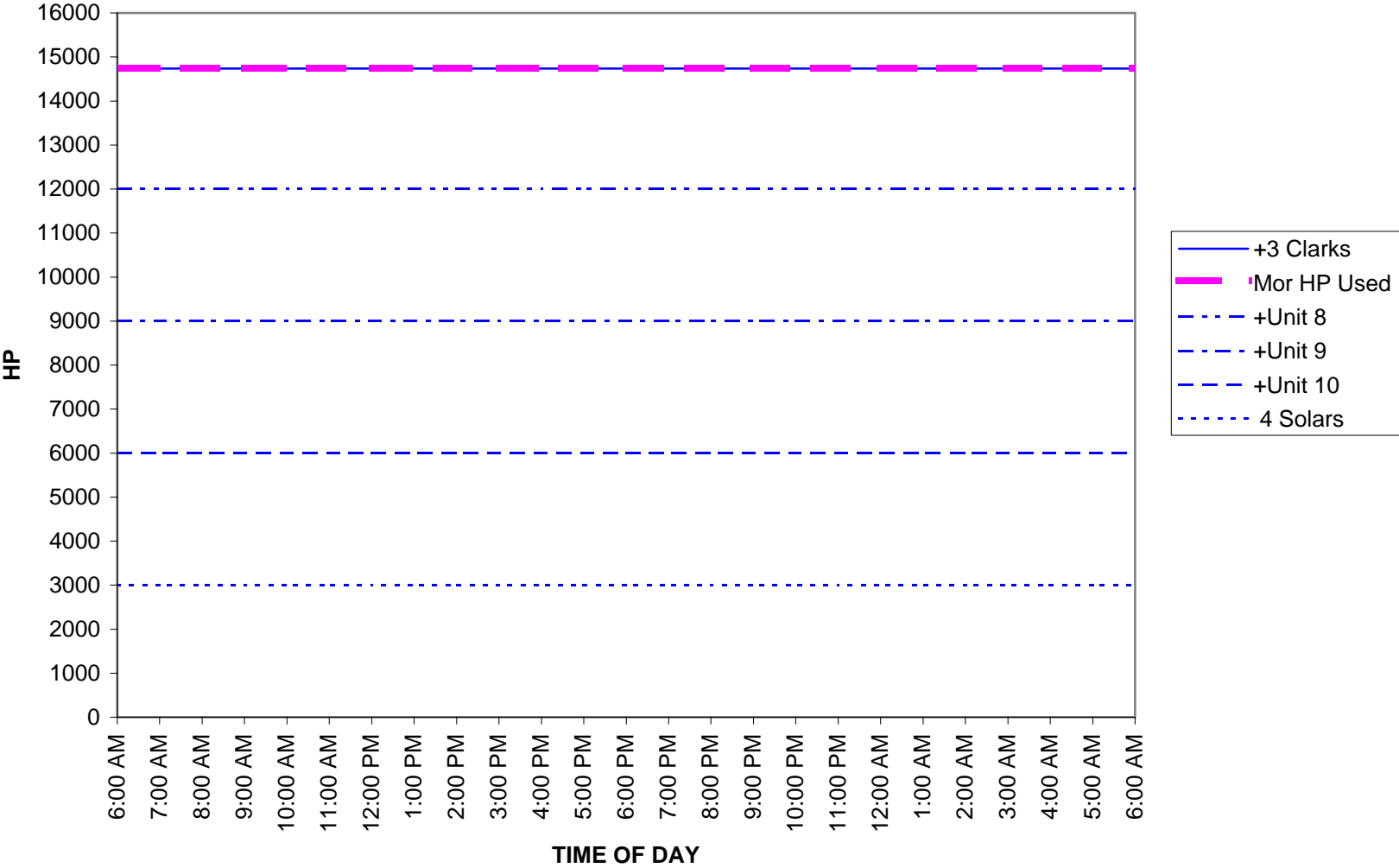


**MORENO PRESSURE AND FLOW**  
 SDG&E Winter=675 MMcfd (December 2009), RDOM = 0  
 EG1=58 MMcfd, EG2=73 MMcfd, EG3=37 MMcfd, RBC=195 MMcfd



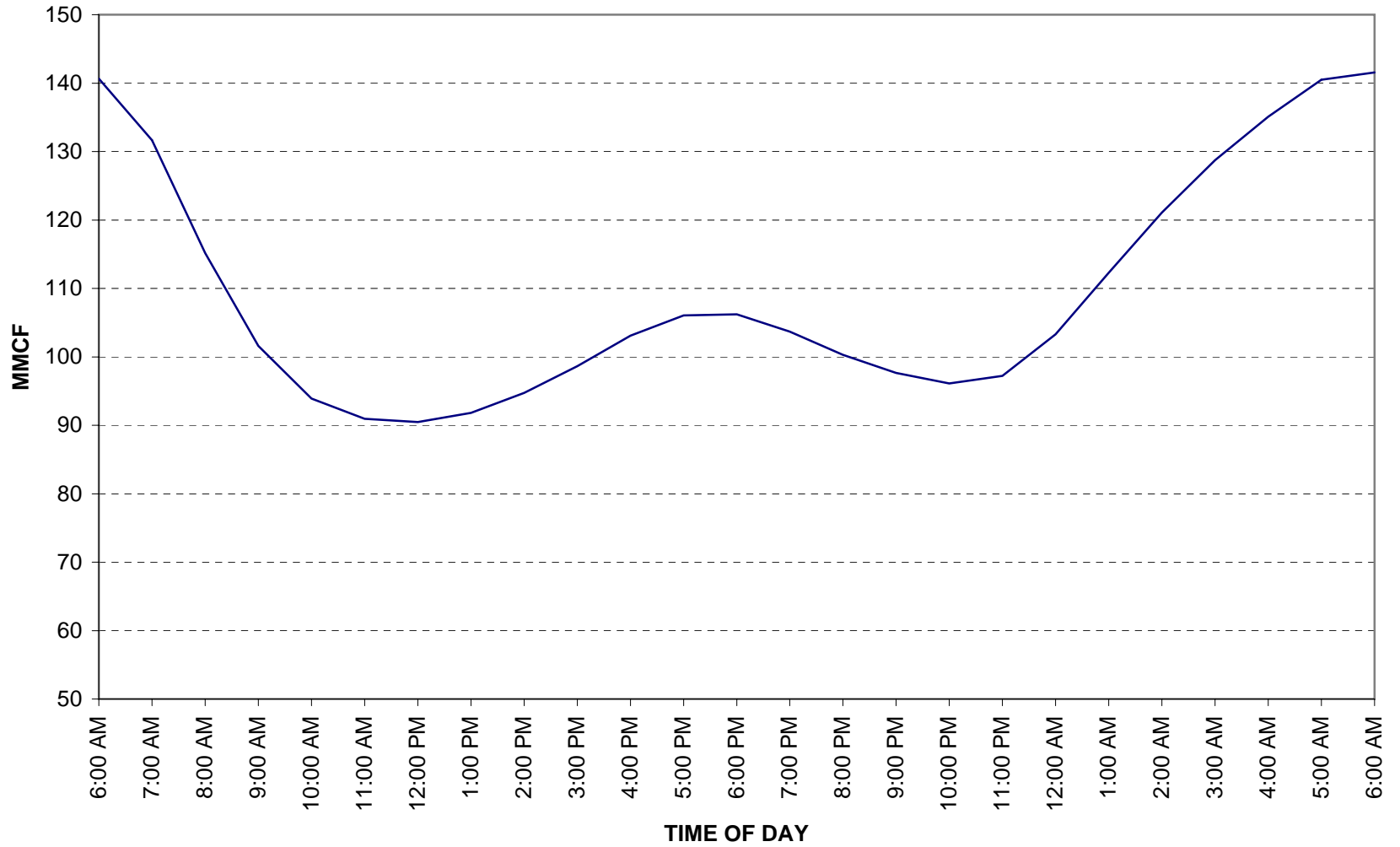
### MORENO HORSEPOWER

SDG&E Winter=675 MMcfd (December 2009), RDOM = 0  
EG1=58 MMcfd, EG2=73 MMcfd, EG3=37 MMcfd, RBC=195 MMcfd



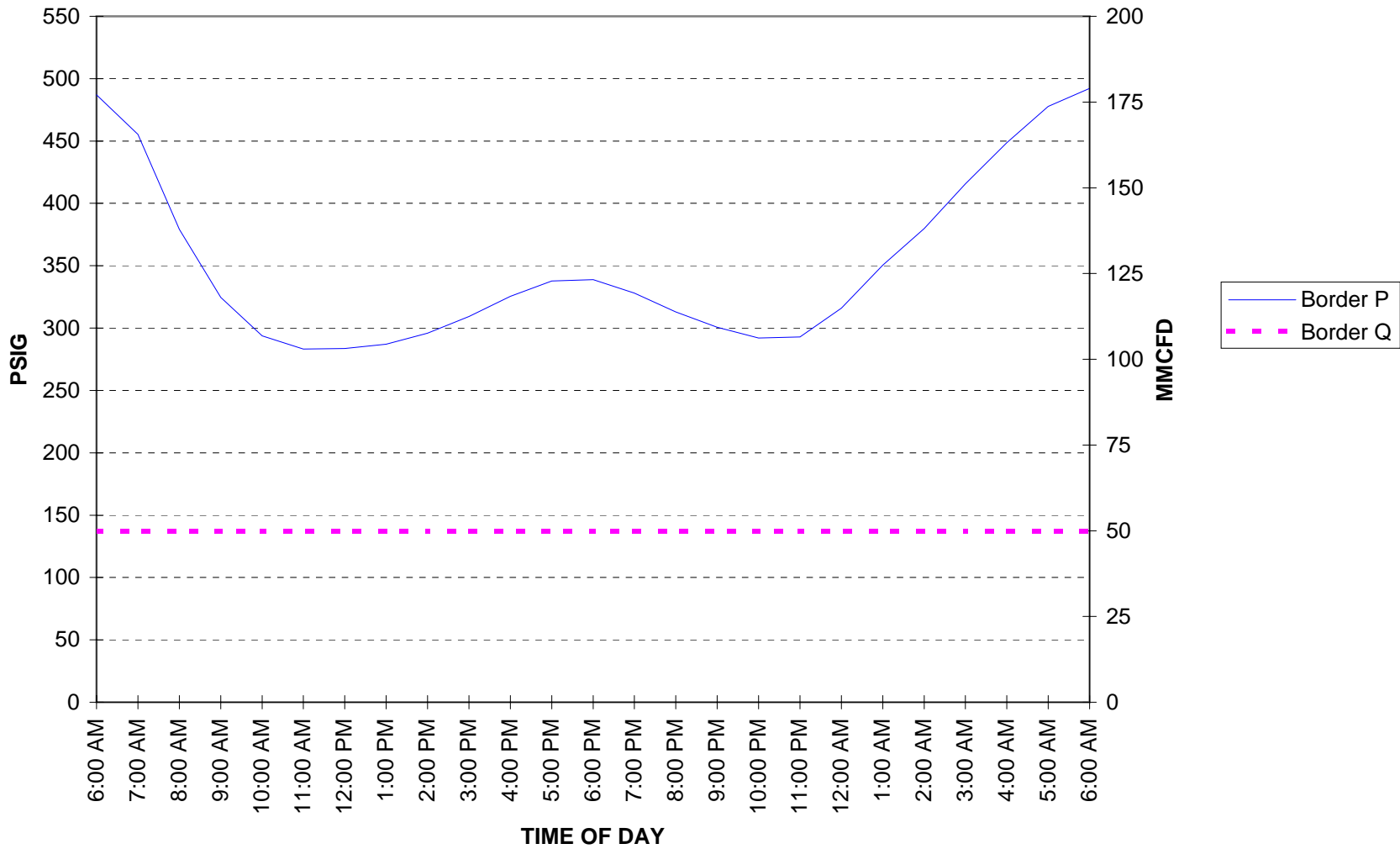
### SDG&E SYSTEM PACK

SDG&E Winter=690 MMcfd (December 2023), RDOM=50 MMcfd  
EG1=68 MMcfd, EG2=65 MMcfd, EG3=50 MMcfd, RBC=287 MMcfd



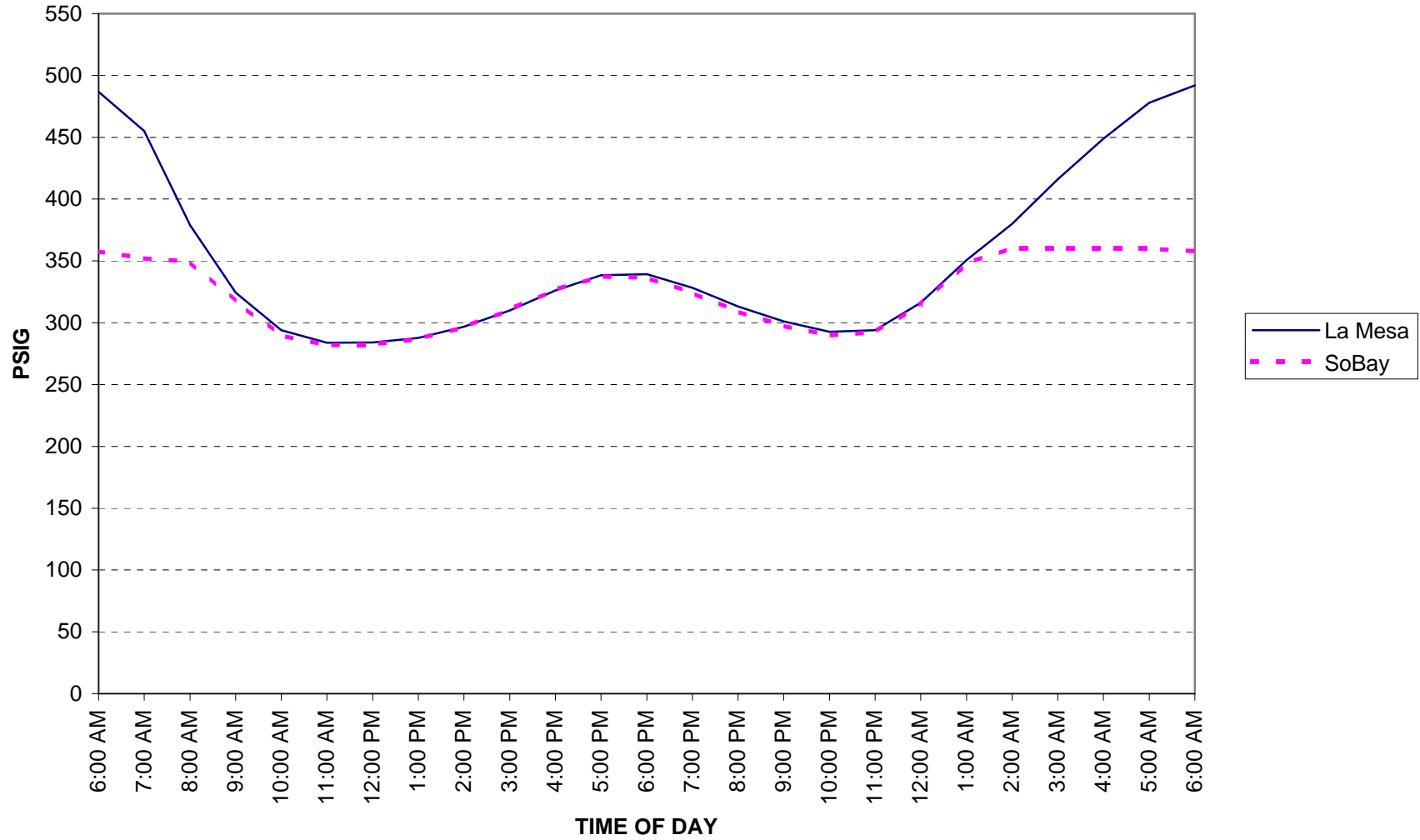
### BORDER PRESSURE AND FLOW

SDG&E Winter=690 MMcfd (December 2023), RDOM=50 MMcfd  
EG1=68 MMcfd, EG2=65 MMcfd, EG3=50 MMcfd, RBC=287 MMcfd



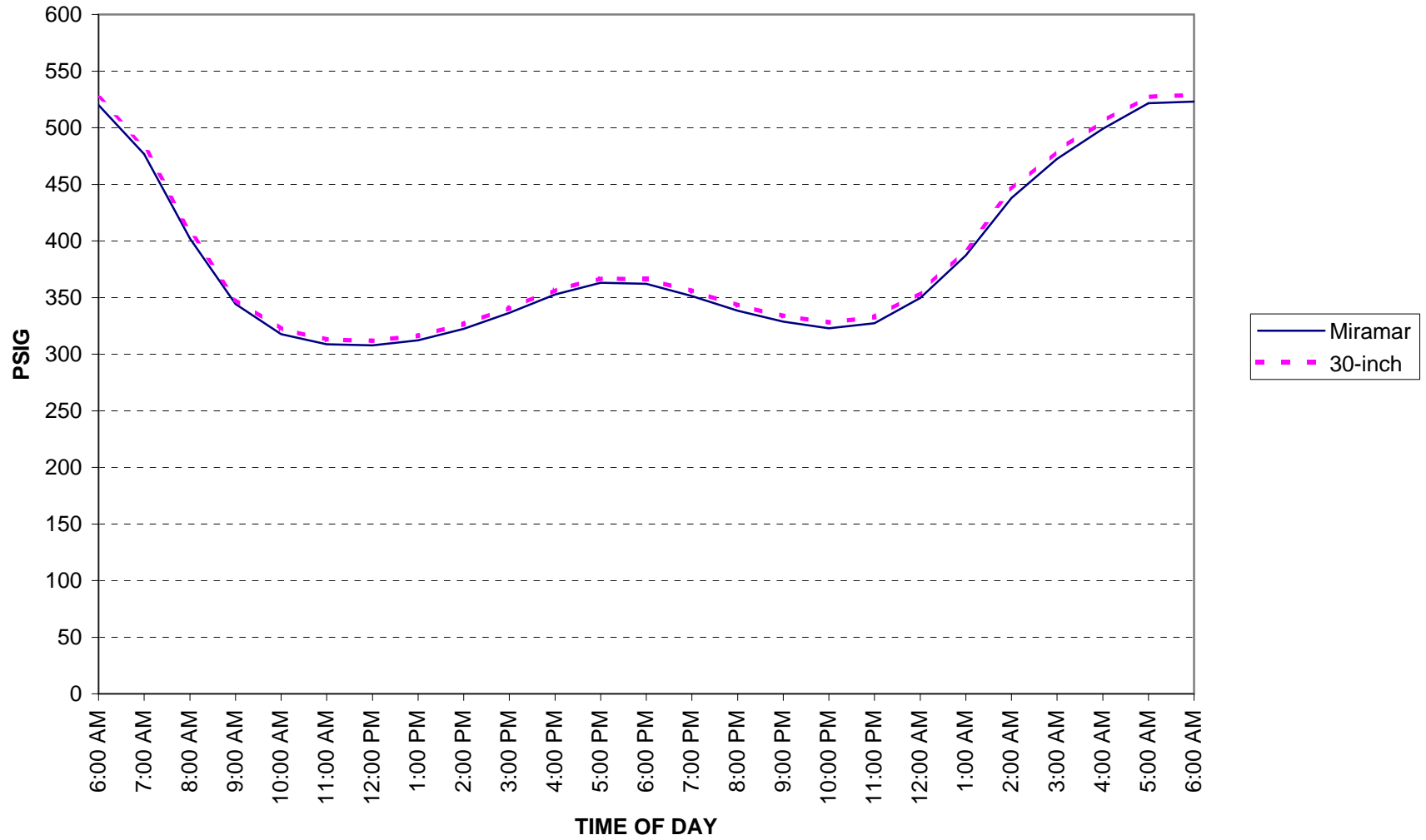
### SYSTEM PRESSURES

SDG&E Winter=690 MMcfd (December 2023), RDOM=50 MMcfd  
EG1=68 MMcfd, EG2=65 MMcfd, EG3=50 MMcfd, RBC=287 MMcfd



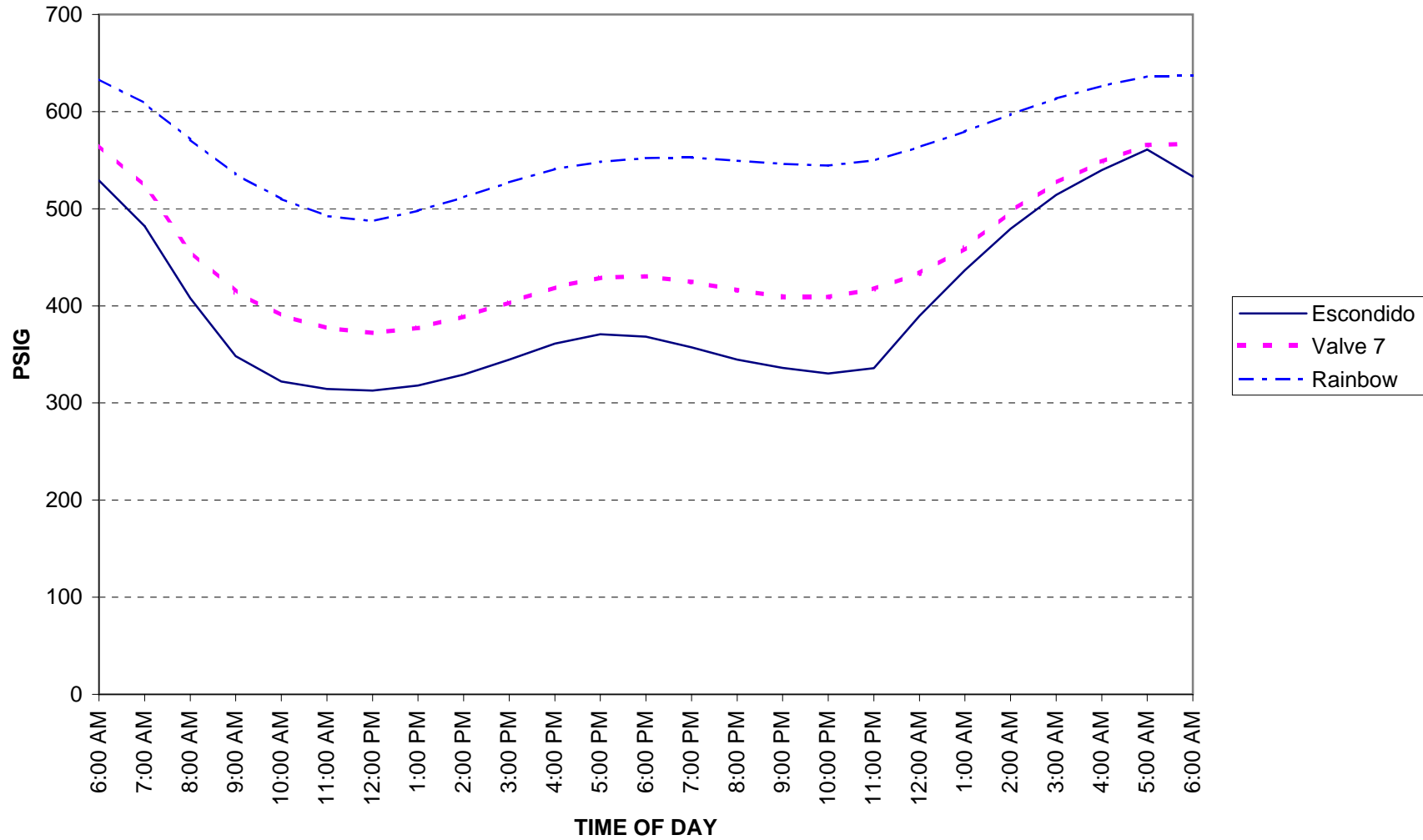
### SYSTEM PRESSURES

SDG&E Winter=690 MMcfd (December 2023), RDOM=50 MMcfd  
EG1=68 MMcfd, EG2=65 MMcfd, EG3=50 MMcfd, RBC=287 MMcfd



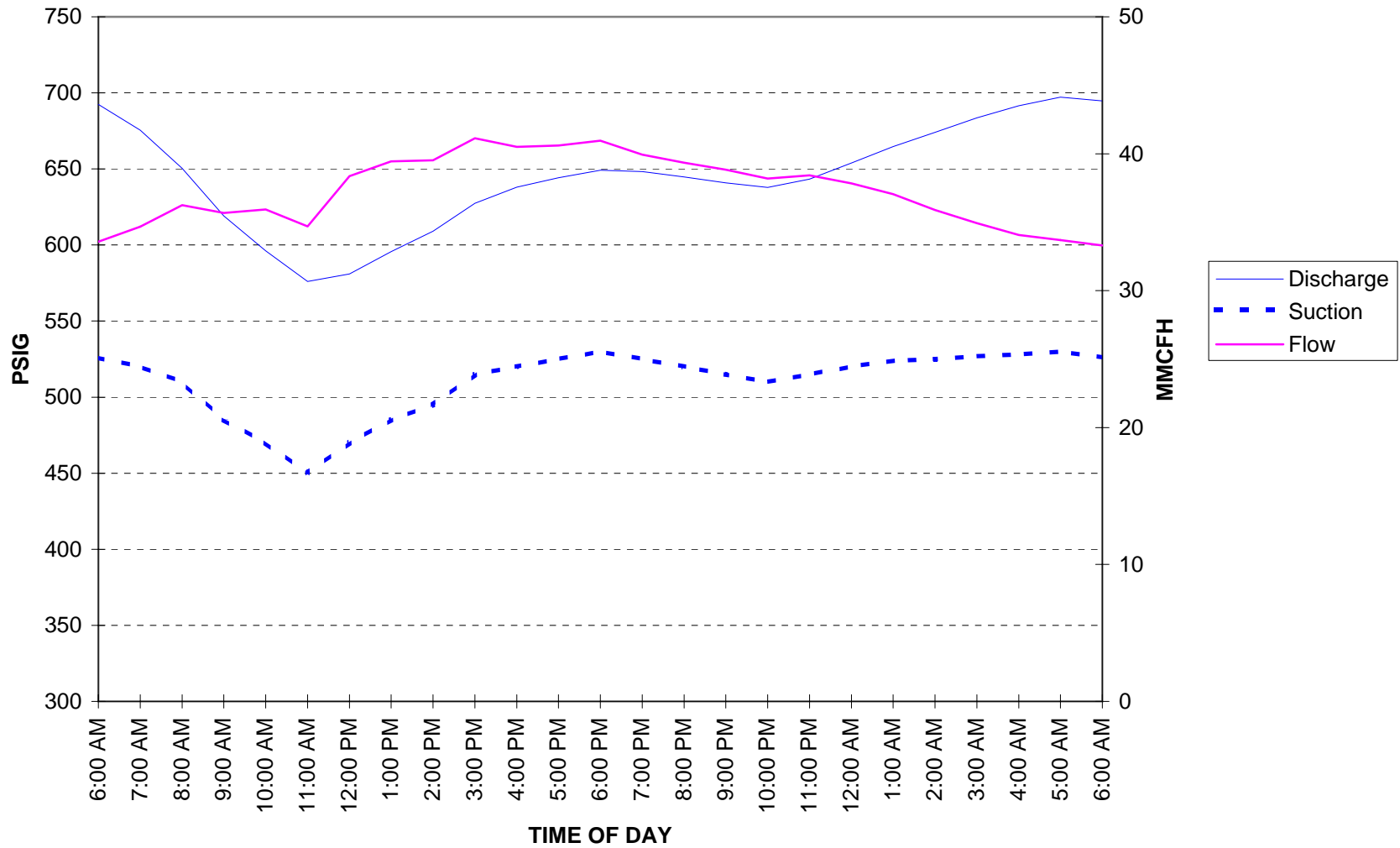
### SYSTEM PRESSURES

SDG&E Winter=690 MMcfd (December 2023), RDOM=50 MMcfd  
EG1=68 MMcfd, EG2=65 MMcfd, EG3=50 MMcfd, RBC=287 MMcfd



### MORENO PRESSURE AND FLOW

SDG&E Winter=690 MMcfd (December 2023), RDOM=50 MMcfd  
EG1=68 MMcfd, EG2=65 MMcfd, EG3=50 MMcfd, RBC=287 MMcfd



# MORENO HORSEPOWER

SDG&E Winter=690 MMcfd (December 2023), RDOM=50 MMcfd  
EG1=68 MMcfd, EG2=65 MMcfd, EG3=50 MMcfd, RBC=287 MMcfd

