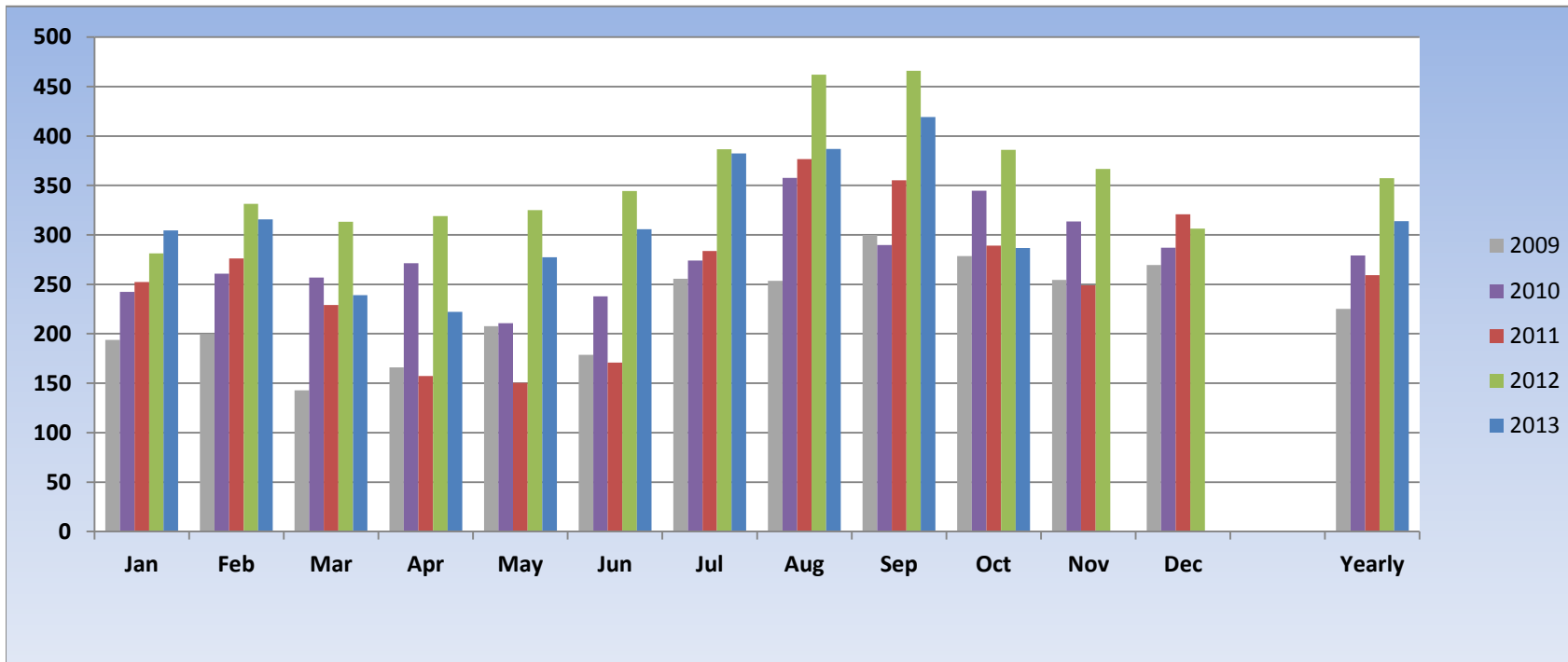


## Southern System EG and SDGE EG combined daily Average (MMCFD)

	<u>2009</u>	<u>2010</u>	<u>2011</u>	<u>2012</u>	<u>2013</u>
Jan	194	242	252	281	304
Feb	199	261	276	331	316
Mar	143	257	229	313	239
Apr	166	271	157	319	222
May	208	211	150	325	277
Jun	179	238	171	344	306
Jul	256	274	284	387	382
Aug	253	358	377	462	387
Sep	300	290	355	466	419
Oct	279	345	289	386	287
Nov	254	314	249	367	-
Dec	270	287	321	306	-
Yearly	225	279	259	357	314



	Daily Southern System Minimum (Cycle 4)	Total Deliveries (Cycle 5)	CEH Purchases
8/9/2012	610,313	596,133	179,317
8/10/2012	580,199	610,490	179,317
8/11/2012	526,997	612,623	29,886
8/12/2012	533,020	631,412	
8/13/2012	582,207	617,342	
8/14/2012	593,248	628,814	
8/15/2012	584,214	597,637	
8/16/2012	578,191	582,079	
8/17/2012	540,047	706,450	
8/18/2012	476,807	656,362	
8/19/2012	475,803	641,705	
8/20/2012	551,089	635,678	
8/21/2012	552,092	590,390	
8/22/2012	553,096	647,512	
8/23/2012	549,081	693,795	
8/24/2012	496,883	768,022	
8/25/2012	460,746	597,471	
8/26/2012	463,758	598,109	
8/27/2012	547,073	532,482	
8/28/2012	608,305	566,130	29,885
8/29/2012	632,397	722,849	69,735
8/30/2012	584,214	674,726	129,507
8/31/2012	546,070	673,241	
9/1/2012	520,974	635,318	
9/2/2012	479,819	642,940	
9/3/2012	480,822	649,339	
9/4/2012	555,104	608,109	
9/5/2012	570,161	602,388	
9/6/2012	571,165	703,351	
9/7/2012	542,054	661,845	
9/8/2012	485,841	724,172	
9/9/2012	486,845	741,036	
9/10/2012	559,119	756,564	
9/11/2012	560,123	776,903	
9/12/2012	542,054	751,327	
9/13/2012	613,324	701,224	
9/14/2012	622,359	776,326	
9/15/2012	537,035	840,657	
9/16/2012	536,032	832,470	

9/17/2012	580,199	741,477	
9/18/2012	592,245	733,661	
9/19/2012	615,332	677,734	
9/20/2012	578,191	717,134	
9/21/2012	563,134	709,929	
9/22/2012	491,864	703,818	
9/23/2012	488,853	703,983	
9/24/2012	526,997	706,840	
9/25/2012	532,016	744,208	
9/26/2012	534,024	731,644	
9/27/2012	548,077	844,433	
9/28/2012	521,978	713,844	
9/29/2012	515,955	718,669	
9/30/2012	533,020	690,239	
10/1/2012	637,901	658,940	
10/2/2012	606,808	561,487	59,821
10/3/2012	541,614	604,303	76,771
10/4/2012	494,474	633,081	
10/5/2012	482,438	632,195	
10/6/2012	408,216	488,254	
10/7/2012	411,225	520,068	
10/8/2012	493,471	562,501	
10/9/2012	503,500	698,043	
10/10/2012	500,491	648,041	
10/11/2012	503,500	558,391	179,463
10/12/2012	440,312	463,894	
10/13/2012	389,160	561,049	
10/14/2012	395,178	613,599	
10/15/2012	475,417	647,762	
10/16/2012	602,796	756,607	
10/17/2012	640,910	635,117	89,732
10/18/2012	561,674	666,118	
10/19/2012	525,566	603,819	
10/20/2012	450,342	630,189	
10/21/2012	426,270	533,899	
10/22/2012	495,477	648,278	
10/23/2012	473,411	647,679	
10/24/2012	480,432	803,202	
10/25/2012	485,447	676,360	
10/26/2012	486,450	728,449	

10/27/2012	414,234	679,794	74,778
10/28/2012	412,228	681,099	74,778
10/29/2012	484,444	532,222	
10/30/2012	508,515	526,135	74,777
10/31/2012	505,506	518,798	
11/1/2012	482,438	520,715	149,232
11/2/2012	415,237	504,474	49,176
11/3/2012	380,133	378,999	
11/4/2012	429,279	424,045	
11/5/2012	456,360	542,082	
11/6/2012	468,396	491,955	
11/7/2012	458,366	482,770	
11/8/2012	497,482	497,276	74,867
11/9/2012	467,393	472,583	
11/10/2012	437,303	526,702	
11/11/2012	438,306	512,675	
11/12/2012	471,405	566,933	
11/13/2012	503,500	557,190	
11/14/2012	485,447	621,320	
11/15/2012	471,405	600,997	
11/16/2012	463,381	634,350	
11/17/2012	483,441	470,210	39,880
11/18/2012	439,309	436,148	
11/19/2012	460,372	563,625	19,940
11/20/2012	528,575	664,214	
11/21/2012	503,500	565,102	
11/22/2012	439,309	442,583	79,762
11/23/2012	416,240	472,466	109,672
11/24/2012	437,303	434,413	79,505
11/25/2012	439,309	444,588	74,777
11/26/2012	511,524	616,812	159,523
11/27/2012	572,707	656,693	
11/28/2012	633,889	620,357	
11/29/2012	642,916	779,948	
11/30/2012	586,749	641,632	
12/1/2012	500,491	497,990	59,821
12/2/2012	464,384	367,155	36,639
12/3/2012	530,581	646,608	
12/4/2012	527,572	594,714	
12/5/2012	528,575	549,403	54,836

12/6/2012	531,584	546,032	
12/7/2012	484,444	482,983	
12/8/2012	408,216	477,420	
12/9/2012	403,202	511,432	
12/10/2012	484,444	469,354	
12/11/2012	554,653	529,651	56,830
12/12/2012	550,641	589,050	
12/13/2012	613,829	719,223	
12/14/2012	615,835	788,130	
12/15/2012	605,805	744,897	
12/16/2012	606,808	718,721	
12/17/2012	648,934	839,043	
12/18/2012	615,835	668,280	
12/19/2012	638,904	650,987	167,499
12/20/2012	773,304	750,705	432,707
12/21/2012	745,221	738,947	274,181
12/22/2012	582,737	581,194	71,745
12/23/2012	544,623	563,499	14,955
12/24/2012	514,533	570,005	
12/25/2012	493,471	465,328	99,702
12/26/2012	560,671	711,414	247,260
12/27/2012	547,632	578,942	207,380
12/28/2012	562,677	601,937	249,255
12/29/2012	521,554	478,209	99,702
12/30/2012	545,626	508,769	128,616
12/31/2012	507,512	507,367	128,616
1/1/13	577,884	596,944	207,322
1/2/13	626,041	631,993	261,146
1/3/13	651,123	616,550	297,022
1/4/13	664,165	643,163	328,461
1/5/13	611,995	572,761	164,462
1/6/13	634,067	614,444	172,888
1/7/13	654,132	646,885	212,306
1/8/13	649,116	715,289	374,127
1/9/13	676,204	761,447	368,792
1/10/13	693,260	772,194	503,354
1/11/13	901,940	899,534	622,847
1/12/13	875,855	864,230	540,233
1/13/13	873,849	873,823	533,165
1/14/13	899,934	907,955	587,717

1/15/13	923,009	994,166	740,375
1/16/13	785,561	775,815	493,042
1/17/13	712,322	727,519	477,286
1/18/13	644,100	705,440	523,287
1/19/13	549,792	617,706	319,954
1/20/13	530,730	545,232	308,464
1/21/13	517,688	529,503	287,061
1/22/13	534,743	621,726	308,989
1/23/13	651,123	655,000	281,081
1/24/13	576,881	578,645	235,231
1/25/13	582,900	600,048	173,432
1/26/13	554,809	694,090	-
1/27/13	577,884	661,888	-
1/28/13	653,129	678,944	92,697
1/29/13	598,953	734,599	-
1/30/13	577,884	649,098	-
1/31/13	544,776	637,507	-
2/1/13	498,626	828,761	
2/2/13	380,240	839,817	
2/3/13	386,259	839,817	
2/4/13	495,616	774,490	
2/5/13	572,868	834,477	
2/6/13	610,992	842,167	
2/7/13	642,093	808,306	
2/8/13	626,041	856,505	
2/9/13	596,946	809,090	
2/10/13	595,943	824,458	
2/11/13	640,087	717,051	
2/12/13	637,077	709,377	
2/13/13	608,985	709,625	
2/14/13	590,926	769,138	
2/15/13	528,724	761,961	
2/16/13	462,508	631,939	
2/17/13	467,524	763,306	
2/18/13	575,877	696,924	
2/19/13	583,904	682,682	
2/20/13	634,067	744,138	
2/21/13	690,250	725,372	
2/22/13	672,191	770,819	
2/23/13	610,992	699,006	

2/24/13	615,005	701,325	
2/25/13	626,041	705,062	
2/26/13	628,047	756,930	
2/27/13	617,011	653,897	
2/28/13	587,917	787,463	
3/1/13	562,835	604,093	
3/2/13	403,315	540,954	
3/3/13	387,262	563,704	
3/4/13	471,537	555,643	
3/5/13	472,540	576,032	
3/6/13	516,684	555,688	
3/7/13	562,835	592,906	
3/8/13	511,668	622,446	
3/9/13	457,491	518,116	
3/10/13	413,348	534,847	
3/11/13	454,482	447,134	
3/12/13	514,678	454,009	
3/13/13	466,521	486,605	39,870
3/14/13	409,334	480,409	
3/15/13	389,269	464,471	
3/16/13	333,086	339,388	29,902
3/17/13	325,060	370,853	
3/18/13	427,393	426,377	74,756
3/19/13	396,292	413,527	
3/20/13	397,295	409,304	49,837
3/21/13	383,249	382,968	29,901
3/22/13	378,233	359,175	
3/23/13	350,141	462,267	137,667
3/24/13	321,047	489,127	59,000
3/25/13	388,266	492,230	
3/26/13	481,570	462,436	
3/27/13	505,648	551,775	82,729
3/28/13	393,282	560,430	
3/29/13	374,220	490,764	
3/30/13	316,030	499,486	
3/31/13	315,027	430,550	
4/1/13	398,055	684,276	
4/2/13	400,060	644,277	
4/3/13	397,052	588,495	
4/4/13	395,047	586,597	

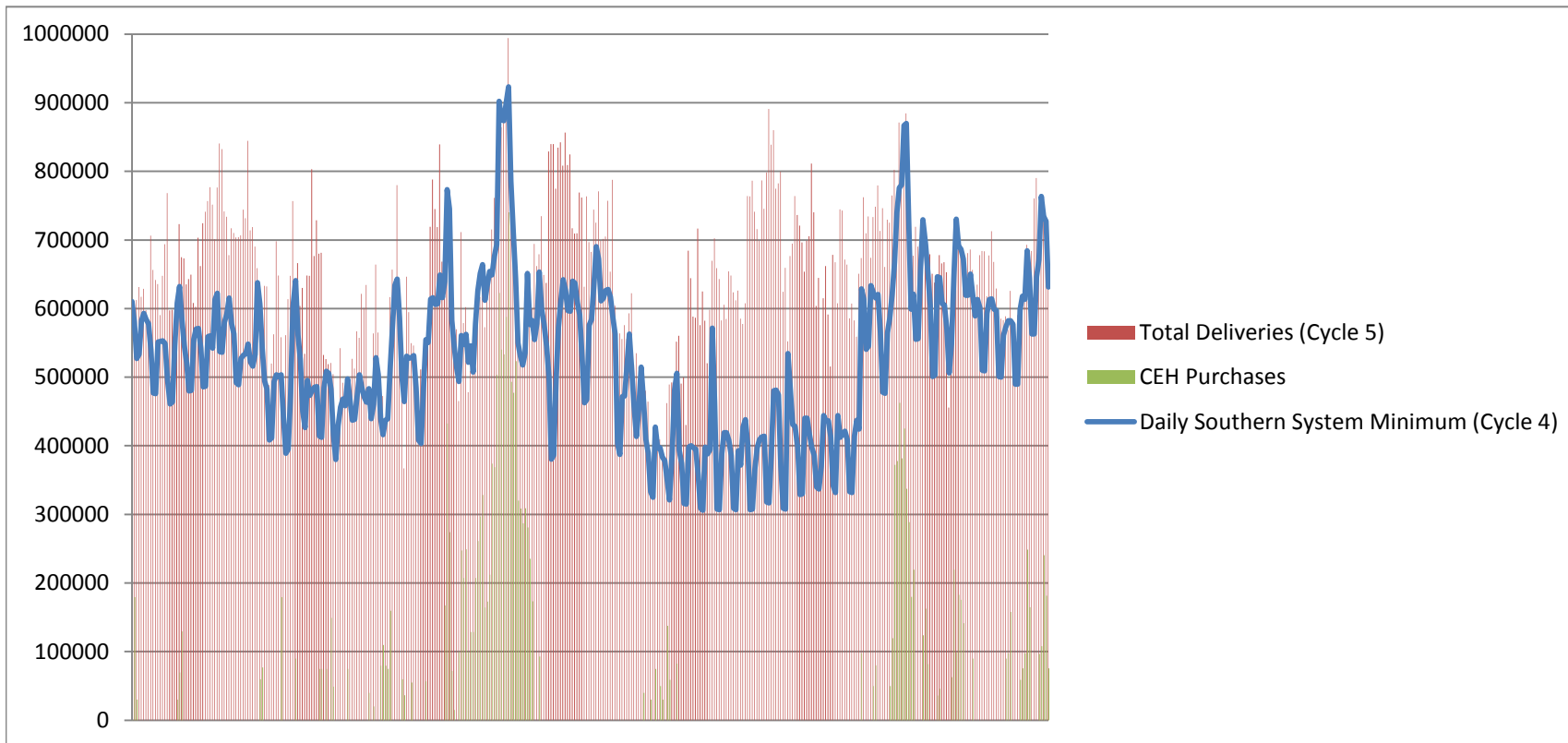
4/5/13	357,949	716,499
4/6/13	308,818	575,964
4/7/13	305,810	624,990
4/8/13	398,055	582,106
4/9/13	388,028	520,373
4/10/13	394,044	598,096
4/11/13	571,515	669,608
4/12/13	461,222	702,338
4/13/13	307,816	658,890
4/14/13	306,813	642,896
4/15/13	388,028	582,727
4/16/13	419,111	605,392
4/17/13	419,111	584,918
4/18/13	408,081	654,219
4/19/13	386,023	648,043
4/20/13	308,818	623,711
4/21/13	306,813	612,153
4/22/13	393,042	626,391
4/23/13	371,986	585,090
4/24/13	427,132	577,638
4/25/13	438,161	607,495
4/26/13	402,065	763,894
4/27/13	306,813	763,619
4/28/13	307,816	786,137
4/29/13	365,970	740,900
4/30/13	397,052	715,888
5/1/13	409,084	699,068
5/2/13	413,095	786,702
5/3/13	414,097	745,227
5/4/13	317,842	798,451
5/5/13	316,840	890,872
5/6/13	389,031	838,776
5/7/13	480,273	859,758
5/8/13	481,275	774,866
5/9/13	474,257	782,438
5/10/13	369,980	799,639
5/11/13	308,818	624,658
5/12/13	307,816	659,453
5/13/13	534,416	552,319
5/14/13	484,283	676,690



5/15/13	431,143	694,651	
5/16/13	428,135	764,007	
5/17/13	398,055	736,311	
5/18/13	328,872	720,840	
5/19/13	329,874	696,273	
5/20/13	440,166	653,702	
5/21/13	440,166	698,928	
5/22/13	416,103	705,208	
5/23/13	397,052	811,343	
5/24/13	386,023	740,042	
5/25/13	339,901	603,717	
5/26/13	336,893	644,581	
5/27/13	369,980	368,110	
5/28/13	444,177	614,881	
5/29/13	436,156	661,725	
5/30/13	436,156	591,365	
5/31/13	413,095	515,530	
6/1/13	341,906	678,278	
6/2/13	331,879	667,379	
6/3/13	444,177	607,649	
6/4/13	412,092	744,553	
6/5/13	417,105	742,859	
6/6/13	421,116	671,429	
6/7/13	409,084	663,897	
6/8/13	332,882	585,688	
6/9/13	331,879	607,260	
6/10/13	414,097	582,856	
6/11/13	437,158	559,249	
6/12/13	424,124	650,532	
6/13/13	628,666	673,459	97,740
6/14/13	613,626	762,102	
6/15/13	540,432	709,824	
6/16/13	545,445	734,066	
6/17/13	633,679	673,831	
6/18/13	623,653	733,517	49,867
6/19/13	615,631	748,378	79,788
6/20/13	620,645	779,237	
6/21/13	565,499	713,052	
6/22/13	478,267	746,367	
6/23/13	476,262	660,460	

6/24/13	564,496	729,655	
6/25/13	586,554	725,225	49,867
6/26/13	620,645	764,834	119,681
6/27/13	666,767	802,228	372,412
6/28/13	739,961	751,386	377,789
6/29/13	776,057	871,105	462,641
6/30/13	780,067	777,021	381,887
7/1/13	866,664	852,335	425,182
7/2/13	869,670	884,532	337,350
7/3/13	729,400	756,446	288,844
7/4/13	599,150	696,717	179,654
7/5/13	621,193	676,770	219,578
7/6/13	555,066	719,079	
7/7/13	556,068	690,496	
7/8/13	657,262	632,719	
7/9/13	729,400	696,407	123,762
7/10/13	694,333	686,083	162,687
7/11/13	652,252	646,839	81,843
7/12/13	604,160	679,148	
7/13/13	500,962	650,873	
7/14/13	502,966	637,634	
7/15/13	646,241	609,626	35,931
7/16/13	645,239	678,041	45,912
7/17/13	607,166	665,979	
7/18/13	605,162	667,429	
7/19/13	571,097	652,974	
7/20/13	505,971	455,919	
7/21/13	549,054	557,339	62,879
7/22/13	647,243	669,360	219,563
7/23/13	730,402	722,514	98,810
7/24/13	691,327	693,959	182,649
7/25/13	686,318	676,099	175,662
7/26/13	672,291	664,269	141,727
7/27/13	619,189	650,944	
7/28/13	619,189	681,043	
7/29/13	650,248	685,985	
7/30/13	619,189	656,451	89,827
7/31/13	589,131	600,594	
8/1/13	613,177	634,663	
8/2/13	601,154	677,625	

8/3/13	509,979	683,767	
8/4/13	508,977	683,526	
8/5/13	593,139	617,812	
8/6/13	613,177	677,223	
8/7/13	614,179	712,866	
8/8/13	599,150	667,796	
8/9/13	597,147	629,377	
8/10/13	500,962	588,865	
8/11/13	499,960	585,438	
8/12/13	561,077	583,188	
8/13/13	573,100	588,704	89,827
8/14/13	582,118	568,843	97,812
8/15/13	582,118	625,556	157,697
8/16/13	577,108	581,637	
8/17/13	489,941	553,940	
8/18/13	489,941	590,672	
8/19/13	598,148	592,883	58,887
8/20/13	618,187	591,839	75,854
8/21/13	613,177	609,523	97,812
8/22/13	684,314	692,973	248,522
8/23/13	644,237	670,448	164,683
8/24/13	563,081	683,759	
8/25/13	563,081	760,490	
8/26/13	646,241	790,247	
8/27/13	671,289	657,956	96,814
8/28/13	763,466	761,180	107,793
8/29/13	734,410	728,056	240,537
8/30/13	727,397	735,132	181,651
8/31/13	631,212	636,323	75,854



	Total BTS IT Deliveries	Total BTS IT Revenue	Wtd Avg. IT Rate	Discount Applied	Discount (\$) (FT - IT Rate)* IT_Vol	Firm Rate	
	Dth	\$	\$/Dth	\$/Dth		\$/Dth	
Dec-11	21,308,408	\$ 426,168	0.02000	0.08955	\$ 1,908,168	0.10955	
Jan-12	26,050,566	\$ 521,011	0.02000	0.09042	\$ 2,355,492	0.11042	
Feb-12	15,233,095	\$ 456,993	0.03000	0.08042	\$ 1,225,045	0.11042	
Mar-12	1,722,539	\$ 190,203	0.11042	0.00000	\$ -	0.11042	
Apr-12	630,466	\$ 69,616	0.11042	0.00000	\$ -	0.11042	
May-12	2,476,902	\$ 273,500	0.11042	0.00000	\$ -	0.11042	
Jun-12	4,430,846	\$ 398,776	0.09000	0.02042	\$ 90,478	0.11042	
Jul-12	9,334,814	\$ 466,741	0.05000	0.06042	\$ 564,009	0.11042	
Aug-12	15,419,485	\$ 462,585	0.03000	0.08042	\$ 1,240,035	0.11042	
Sep-12	15,556,826	\$ 1,382,311	0.08886	0.02156	\$ 335,474	0.11042	
Oct-12	12,625,611	\$ 1,096,791	0.08687	0.02355	\$ 297,329	0.11042	
Nov-12	9,068,088	\$ 428,175	0.04722	0.06320	\$ 573,123	0.11042	
Dec-12	14,415,828	\$ 864,950	0.06000	0.05042	\$ 726,846	0.11042	
Jan-13	20,104,198	\$ 1,407,294	0.07000	0.06763	\$ 1,359,647	0.13763	
Feb-13	20,622,888	\$ 206,229	0.01000	0.12763	\$ 2,632,099	0.13763	
Mar-13	12,715,604	\$ 953,670	0.07500	0.06263	\$ 796,378	0.13763	
Apr-13	14,435,695	\$ 1,154,856	0.08000	0.05763	\$ 831,929	0.13763	
May-13	18,491,245	\$ 1,849,125	0.10000	0.03763	\$ 695,826	0.13763	
Jun-13	14,855,312	\$ 1,782,637	0.12000	0.01764	\$ 262,048	0.13764	
Jul-13	17,393,764	\$ 563,538	0.03240	0.10524	\$ 1,830,540	0.13764	
Aug-13	16,212,418	\$ 459,141	0.02832	0.10932	\$ 1,772,336	0.13764	
Sep-13	17,764,617	\$ 363,176	0.02044	0.11720	\$ 2,081,946	0.13764	
Oct-13	10,547,056	\$ 1,010,539	0.09581	0.04183	\$ 441,158	0.13764	
Nov-13	5,076,478	\$ 698,726	0.13764	0.00000	\$ -	0.13764	
MTD (Dec-15)	Dec-13	1,976,228	\$ 272,008	0.13764	0.00000	\$ -	0.13764

Dth  
318,468,977

\$  
\$ 17,758,757

\$  
\$ 22,019,907