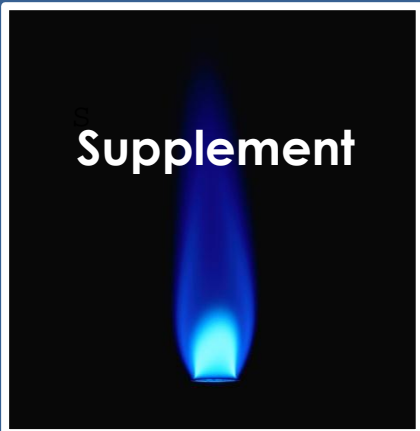
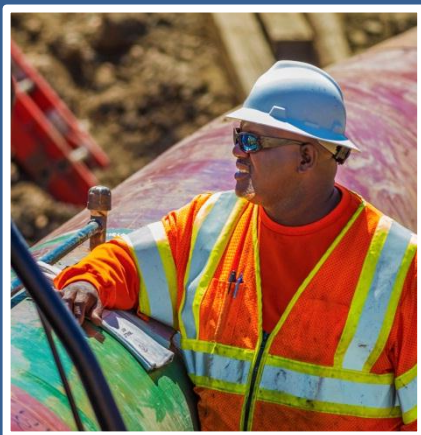
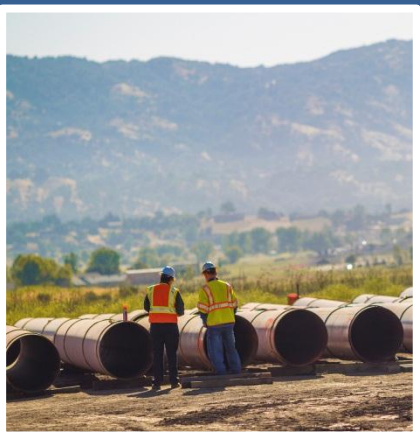


2017 CALIFORNIA GAS REPORT



Prepared by the California Gas and Electric Utilities



2017 CALIFORNIA GAS REPORT SUPPLEMENT

PREPARED BY THE CALIFORNIA GAS AND ELECTRIC UTILITIES

Southern California Gas Company
Pacific Gas and Electric Company
San Diego Gas & Electric Company
Southwest Gas Corporation
City of Long Beach Gas & Oil Department

TABLE OF CONTENTS

	Page No.
FOREWORD	6
Statewide Recorded Sources and Disposition Summary	8
Statewide Recorded Highest Sendout.....	17
Recorded Actuals	18
NORTHERN CALIFORNIA RECORDED ACTUALS	21
PACIFIC GAS & ELECTRIC COMPANY	23
. SOUTHERN CALIFORNIA RECORDED ACTUALS	25
SOUTHERN CALIFORNIA GAS COMPANY	27
CITY OF LONG BEACH GAS & OIL DEPARTMENT	28
SAN DIEGO GAS & ELECTRIC COMPANY	30
Natural Gas Storage Overview	33
RESPONDENTS	36
RESERVE YOUR SUBSCRIPTION 2018 CALIFORNIA GAS REPORT	39

FOREWORD

The 2017 Annual California Gas Report Supplement was prepared in compliance with California Public Utilities Commission Decision D.95-01-039, approved on January 24, 1995. In addition to requiring respondent utilities to prepare a comprehensive California Gas Report biennially, D.95-01-039 requires the utilities to prepare a supplemental report in odd numbered years. The supplemental report provides recorded data for the previous year.

This 2017 California Gas Report Supplement includes the latest recorded data on gas supply and gas requirements for each of the utilities listed below:

- Southern California Gas Company (SoCalGas)
- Pacific Gas & Electric Company (PG&E)
- San Diego Gas & Electric Company (SDG&E)
- City of Long Beach Gas & Oil Department (City of Long Beach)

The report is organized into two sections: Statewide Sources and Disposition and Recorded Actuals. The Recorded Actuals are split into Northern California and Southern California. The Northern California Section provides data for PG&E. The Southern California Section provides data for SoCalGas, the City of Long Beach, and SDG&E.

2017 CALIFORNIA GAS REPORT SUPPLEMENT

STATEWIDE SOURCES AND DISPOSITION SUMMARY

STATEWIDE SOURCES AND DISPOSITION SUMMARY

The Statewide Sources and Disposition Summary is intended to complement the existing five-year recorded data tables included in the tabular data section of each utility. Please note that Non-Utilities Served Load is defined in this report as the volume of gas, which might have been served by the California Utilities, but is now being served by non-utility entities or non-CPUC jurisdictional pipelines. The Summary does not include electric bypass, or what is commonly referred to as “bypass by wire”.

The information shown on the following Statewide Sources and Disposition Summary tables is based on the utilities’ accounting records and on available gas nomination and preliminary gas transaction information obtained daily from customers or their appointed agents and representatives. It should be noted that data on gas daily nominations are frequently subject to reconciling adjustments. In addition, some of the data are based on allocations and assignments which, by necessity, rely on estimated or preliminary information.

Some columns may not sum exactly because of factored allocations and rounding differences, and do not imply curtailments.

Recorded 2012 Statewide Sources and Disposition Summary
MMcf/Day

	California Sources	El Paso	Trans western	GTN	Kern River	Mojave (10)	Other (1)	Ruby	Total
Southern California Gas Company									
Core + UAF (2)	-10	402	304	59	216	0	10	0	981
Noncore Commercial/Industrial	41	86	80	55	145	13	1	0	425
EG (3)	89	186	174	119	315	28	3	0	922
EOR	3	6	5	4	10	1	0	0	29
Wholesale/Resale/International (4)	25	143	116	47	151	0	6	0	477
Total	148	822	680	283	838	42	21	0	2,834
Pacific Gas and Electric Company (5)									
Core	0	165	90	352	19	0	0	183	809
Noncore Industrial/Wholesale/EG (6)	84	94	95	428	141	318	13	689	1,863
Total	84	259	185	781	161	318	13	872	2,672
Other Northern California									
Core (7)	11	0	0	0	0	0	12	0	23
Non-Utilities Served Load (8,9)									
Direct Sales/Bypass	394	0	0	0	815	36	0	0	1,245
TOTAL SUPPLIER	637	1,081	865	1,064	1,814	396	46	872	6,774

Notes:

- (1) Includes storage activities, volumes delivered on Questar Southern Trails for SoCalGas and PG&E.
- (2) Includes NGV volumes
- (3) EG includes UEG, COGEN, and EOR Cogen.
- (4) Includes transportation to City of Long Beach, Southwest Gas, City of Vernon, DGN, & SDG&E, as shown.

	California Sources	El Paso	Trans western	GTN	Kern River	Mojave (10)	Other (1)	Ruby	Total
San Diego Gas & Electric Company									
Core	-1.4	55	41	8	30	0	1.4	0	134
Noncore Commercial/Industrial	21	58	50	29	90	0	4	0	251
Total	20	113	91	37	120	0	5	0	385
SouthWest Gas									
Core	22	0	0	0	0	0	11.50	0	33.50
Noncore Commercial/Industrial	2	0	0	0	0	0	0.15	0	2.15
Total	24	0	0	0	0	0	11.65	0	35.65

- (5) Kern River supplies include net volume flowing over Kern River High Desert interconnect.
- (6) Includes UEG, COGEN, industrial and deliveries to PG&E's wholesale customers.
- (7) Includes Southwest Gas Corporation and Tuscarora deliveries in the Lake Tahoe and Susanville areas.
- (8) Deliveries to end-users by non-CPUC jurisdictional pipelines.
- (9) California production is preliminary.

Recorded 2013 Statewide Sources and Disposition Summary
MMcf/Day

California Sources	El Paso	Trans western	GTN	Kern River	Mojave (10)	Other (1)	Ruby	Total
Southern California Gas Company								
Core + UAF (2)	361	265	67	230	0	56	0	997
Noncore Commercial/ Industrial	163	117	25	77	10	-2	0	426
EG (3)	324	231	50	153	19	-4	0	845
EOR	13	10	2	6	1	0	0	35
Wholesale/Resale/International (4)	141	114	45	144	2	2	0	472
Total	1,003	737	189	611	32	51	0	2,775
Pacific Gas and Electric Company (5)								
Core	91	116	330	43	0	0	181	760
Noncore Industrial/Wholesale/EG (6)	88	92	429	130	0	45	599	1,440
Total	178	208	759	173	0	45	779	2,200
Other Northern California								
Core (7)	0	0	0	0	0	12	0	24
Non-Utilities Served Load (8,9)								
Direct Sales/Bypass	0	0	0	645	129	0	0	1,170
TOTAL SUPPLIER	1,181	945	948	1,429	161	109	779	6,169
San Diego Gas & Electric Company								
Core	56.2	42.5	8.2	30.1	1.8	0.0	0	137
Noncore Commercial/ Industrial	55.0	47.6	26.9	83.4	0.0	1.4	0	234
Total	111	90	35	114	2	1	0	371
SouthWest Gas								
Core	0	0	0	0	0	12	0	33.5
Noncore Commercial/ Industrial	0	0	0	0	0	0.15	0	2.2
Total	0	0	0	0	0	11.65	0	35.7

Notes:

- (1) Includes storage activities, volumes delivered on Questar Southern Trails for SoCalGas and PG&E.
- (2) Includes NGV volumes
- (3) EG includes UEG, COGEN, and EOR Cogen.
- (4) Includes transportation to City of Long Beach, Southwest Gas, City of Vernon, DGN, & SDG&E, as shown.

- (5) Kern River supplies include net volume flowing over Kern River High Desert interconnect.
- (6) Includes UEG, COGEN, industrial and deliveries to PG&E's wholesale customers.
- (7) Includes Southwest Gas Corporation and Tuscarora deliveries in the Lake Tahoe and Susanville areas.
- (8) Deliveries to end-users by non-CPUC jurisdictional pipelines.
- (9) California production is preliminary.

Recorded 2014 Statewide Sources and Disposition Summary MMcf/Day

	California Sources	El Paso	Trans western	GTN	Kern River	Mojave	Other (1)	RUBY	Total
Southern California Gas Company									
Core + UAF (2)	35	426	182	61	226	0	-61	0	869
Noncore Commercial/Industrial	27	107	90	98	53	8	27	0	411
EG (3)	57	225	190	207	112	17	56	0	863
EOR	3	11	10	11	6	1	3	0	44
Wholesale/Resale/International (4)	20	122	99	39	125	2	2	0	410
Total	142	891	571	416	522	28	27	0	2397
Pacific Gas and Electric Company (5)									
Core	0	26	100	328	18	0	0	184	657
Noncore Industrial/Wholesale/EG (6)	49	237	161	428	64	0	57	642	1,638
Total	49	264	261	757	82	0	57	826	2,295
Other Northern California									
Core (7)	12	0	0	0	0	0	0	0	12
Non-Utilities Served Load (8,9)									
Direct Sales/Bypass	588	0	0	0	810	202	0	0	1,600
TOTAL SUPPLIER	791	1,155	832	1,173	1,414	230	84	826	6,492

Notes:

- (1) Includes storage activities, volumes delivered on Questar Southern Trails for SoCalGas and PG&E.
- (2) Includes NGV volumes
- (3) EG includes UEG, COGEN, and EOR Cogen.
- (4) Includes transportation to City of Long Beach, Southwest Gas, City of Vernon, DGN, & SDG&E, as shown.

	California Sources	El Paso	Trans western	GTN	Kern River	Mojave (10)	Other (1)	RUBY	Total
San Diego Gas & Electric Company									
Core	-1	48	36	7	26	2	0	0	117
Noncore Commercial/Industrial	17	48	41	23	73	0	1	0	204
Total	16	96	77	30	99	2	1	0	321
SouthWest Gas									
Core	20	0	0	0	0	0	11.10	0.000	20.00
Noncore Commercial/Industrial	2	0	0	0	0	0	0.40	0.000	2.00
Total	22	0	0	0	0	0	13.17	0.000	22.00

- (5) Kern River supplies include net volume flowing over Kern River High Desert interconnect.
- (6) Includes UEG, COGEN, industrial and deliveries to PG&E's wholesale customers.
- (7) Includes Southwest Gas Corporation and Tuscarora deliveries in the Lake Tahoe and Susanville areas.
- (8) Deliveries to end-users by non-CPUC jurisdictional pipelines.
- (9) California production is preliminary.

**Recorded 2015 Statewide Sources and Disposition Summary
MMcf/Day**

	California Sources	El Paso	Trans western	GIN	Kern River	Mojave	Other (1)	RUBY	Total
Southern California Gas Company									
Core + UAF (2)	-61	447	76	40	225	0	122	0	876
Noncore Commercial/Industrial	64	238	20	16	26	28	74	0	414
EG (3)	124	457	39	30	50	54	142	0	795
EOR	7	26	2	2	3	3	8	0	46
Wholesale/Resale/International (4)	-12	136	85	29	156	12	10	0	428
Total	122	1305	223	117	461	97	357	0	2559
Pacific Gas and Electric Company (5)									
Core	0	23	124	345	12	0	0	207	711
Noncore Industrial/Wholesale/EG (6)	37	216	145	798	81	0	56	551	1,884
Total	37	239	268	1,143	93	0	56	758	2,595
Other Northern California									
Core (7)	11	0	0	0	0	0	0	0	11
Non-Utilities Served Load (8,9)									
Direct Sales/Bypass	523	0	0	0	697	14	0	0	1,234
TOTAL SUPPLIER	693	1544	491	1260	1251	111	413	758	6399

Notes:

- (1) Includes storage activities, volumes delivered on Questar Southern Trails for SoCalGas and PG&E.
- (2) Includes NGV volumes
- (3) EG includes UEG, COGEN, and EOR Cogen.
- (4) Includes transportation to City of Long Beach, Southwest Gas, City of Vernon, DGN, & SDG&E, as shown.

San Diego Gas & Electric Company

	California Sources	El Paso	Trans western	GIN	Kern River	Mojave (10)	Other (1)	RUBY	Total
Core	-8	68	16	7	26	0	7	0	116
Noncore Commercial/Industrial	-2	39	51	16	97	9	1	0	211
Total	-10	107	67	23	123	9	8	0	327

SouthWest Gas

	California Sources	El Paso	Trans western	GIN	Kern River	Mojave (10)	Other (1)	RUBY	Total
Core	21	0	0	0	0	0	11.10	0.000	37.00
Noncore Commercial/Industrial	2	0	0	0	0	0	0.40	0.000	2.17
Total	26	0	0	0	0	0	13.17	0.000	39.17

(5) Kern River supplies include net volume flowing over Kern River High Desert interconnect.

(6) Includes UEG, COGEN, industrial and deliveries to PG&E's wholesale customers.

(7) Includes Southwest Gas Corporation and Tuscarora deliveries in the Lake Tahoe and Susanville areas.

(8) Deliveries to end-users by non-CPUC jurisdictional pipelines.

(9) California production is preliminary.

Recorded 2016 Statewide Sources and Disposition Summary MMcf/Day

	California Sources	El Paso	Trans western	GTN	Kern River	Mojave (10)	Other (1)	RUBY	Total
Southern California Gas Company									
Core + UAF (2)	86	417	114	48	196	0	31	0	892
Noncore Commercial/Industrial	9	120	90	37	180	0	20	448	448
EG (3)	15	198	149	61	298	0	33	740	740
EOR	1	10	8	3	16	0	2	39	39
Wholesale/Resale/International (4)	16	121	65	27	127	0	15	390	390
Total	126	866	427	176	816	0	100	0	2,511
Pacific Gas and Electric Company (5)									
Core	0	40	84	318	0	0	0	194	636
Noncore Industrial/Wholesale/EG (6)	33	198	100	837	30	0	15	400	1,613
Total	33	238	184	1,155	30	0	15	594	2,249
Other Northern California									
Core (7)	12	0	0	0	0	0	13	37	62
Non-Utilities Served Load (8,9)									
Direct Sales/Bypass	429	0	0	0	697	14	0	0	1,140
TOTAL SUPPLIER	600	1,104	611	1,331	1,543	14	128	631	5,962

Notes:

- (1) Includes storage activities, volumes delivered on Questar Southern Trails for SoCalGas and PG&E.
- (2) Includes NGV volumes
- (3) EG includes UEG, COGEN, and EOR Cogen.
- (4) Includes transportation to City of Long Beach, Southwest Gas, City of Vernon, DGN, & SDG&E, as shown.

	California Sources	El Paso	Trans western	GTN	Kern River	Mojave (10)	Other (1)	RUBY	Total
San Diego Gas & Electric Company									
Core	13	59	16	6	28	0	4	0	125
Noncore Commercial/Industrial	0	38	36	15	74	0	8	0	171
Total	13	96	52	22	101	0	12	0	296
SouthWest Gas									
Core	22	0	0	0	0	0	11.90	0	34.30
Noncore Commercial/Industrial	2	0	0	0	0	0	0	0	2
Total	26	0	0	0	0	0	12.30	0	38.30

- (5) Kern River supplies include net volume flowing over Kern River High Desert interconnect.
- (6) Includes UEG, COGEN, industrial and deliveries to PG&E's wholesale customers.
- (7) Includes Southwest Gas Corporation and Tuscarora deliveries in the Lake Tahoe and Susanville areas.
- (8) Deliveries to end-users by non-CPUC jurisdictional pipelines.
- (9) California production is preliminary.

STATEWIDE RECORDED HIGHEST SENDOUT

The table below summarizes the highest sendout days by the state in the summer and winter periods from the last five years. Daily sendout from Southern California Gas Company, Pacific Gas & Electric and from customers not served by these utilities were used to construct the following tables.

Estimated California Highest Summer Sendout (MMcf/d)

Year	Date	PG&E ⁽¹⁾	SoCal Gas ⁽²⁾	Utility Total ⁽⁴⁾	Non-Utility ⁽³⁾	State Total
2012	08/13/2012	2,685	3,483	6,168	1,633	7,801
2013	07/01/2013	2,558	3,393	5,951	1,437	7,388
2014	09/16/2014	2,683	3,488	6,171	1,523	7,694
2015	09/10/2015	2,787	3,601	6,388	1,407	7,795
2016	07/28/2016	2,761	3,136	5,897	1,356	7,253

Estimated California Highest Winter Sendout (MMcf/d)

Year	Date	PG&E ⁽¹⁾	SoCal Gas ⁽²⁾	Utility Total ⁽⁴⁾	Non-Utility ⁽³⁾	State Total
2012	12/19/2012	3,628	4,294	7,922	1,501	9,423
2013	12/09/2013	4,850	4,881	9,731	1,426	11,157
2014	12/31/2014	3,429	4,325	7,754	1,465	9,219
2015	12/29/2015	3,626	4,036	7,662	1,311	8,973
2016	01/06/2016	3,224	3,904	7,128	1,285	8,413

Notes:

- (1) PG&E Piperanger.
- (2) SoCalGas Envoy.
- (3) Source: DOGGR, Monthly Oil and Gas Production and Injection Report, Lipmann Monthly Pipeline Reports. Nonutility Demand equals Kern/Mojave and California monthly average total flows less PG&E and SoCal Gas peak day supply from Kern/Mojave and California Production. Provided by the CEC.
- (4) PG&E and SoCalGas sendouts are reported for the day on which the Utility Total sendout is maximum for the respective season each year. Winter season months are Jan, Feb, Mar, Nov and Dec; while Summer season months are Apr, May, Jun, Jul, Aug, Sep and Oct.

2017 CALIFORNIA GAS REPORT SUPPLEMENT

RECORDED ACTUALS

RECORDED ACTUALS

Recorded data for 2012 to 2016 are shown in the following tables in millions of cubic feet per day (MMcf/day). Additional information on gas requirements are indicated as follows:

- Some columns may not sum precisely because of modeling accuracy and rounding and do not imply curtailments.
- For PG&E, the recorded data show supplies, requirements, and gas sendout within the PG&E service area. Therefore, supplies delivered through PG&E to Southern California utilities are not included in PG&E's data.
- The total gas requirements and supplies in the Recorded Actuals section do not include gas volumes served by non-utility entities.

2017 CALIFORNIA GAS REPORT SUPPLEMENT

NORTHERN CALIFORNIA RECORDED ACTUALS

Pacific Gas and Electric Company

**PACIFIC GAS AND ELECTRIC COMPANY
ANNUAL GAS SUPPLY AND REQUIREMENTS
RECORDED YEARS 2012-2016
MMCF/DAY**

LINE		2012	2013	2014	2015	2016	LINE	
GAS SUPPLY TAKEN								
CALIFORNIA SOURCE GAS								
1	Core Purchases	0	0	0	0	0	1	
2	Customer Gas Transport & Exchange	84	57	49	37	33	2	
3	Total California Source Gas	84	57	49	37	33	3	
OUT-OF-STATE GAS								
Core Net Purchases								
6	Rocky Mountain Gas	203	223	202	219	194	6	
7	U.S. Southwest Gas	255	207	126	147	124	7	
8	Canadian Gas	353	330	328	345	318	8	
Customer Gas Transport								
10	Rocky Mountain Gas	846	774	763	689	445	10	
11	U.S. Southwest Gas	190	180	398	360	298	11	
12	Canadian Gas	483	432	428	798	837	12	
13	Total Out-of-State Gas	2,330	2,146	2,247	2,558	2,217	13	
14	STORAGE WITHDRAWAL ⁽²⁾	259	395	344	238	260	14	
15	Total Gas Supply Taken	2,673	2,598	2,640	2,833	2,510	15	
GAS SENDOUT								
CORE								
19	Residential	537	538	437	450	461	19	
20	Commercial	229	229	207	209	214	20	
21	NGV	6	6	7	8	8	21	
22	Total Throughput-Core	771	774	651	667	683	22	
NONCORE								
24	Industrial	518	519	533	534	544	24	
25	Electric Generation ⁽¹⁾	939	987	990	1,025	783	25	
26	NGV	1	1	1	1	1	26	
27	Total Throughput-Noncore	1,458	1,507	1,524	1,560	1,329	27	
28	WHOLESALE	9	10	8	8	8	28	
29	Total Throughput	2,239	2,291	2,183	2,235	2,020	29	
30	OFF-SYSTEM DELIVERIES ⁽⁴⁾				251	217	30	
31	CALIFORNIA EXCHANGE GAS	2	2	0	0	0	31	
32	STORAGE INJECTION ⁽²⁾	344	267	425	291	231	32	
33	SHRINKAGE Company Use / Unaccounted for	88	39	32	56	42	33	
34	Total Gas Send Out	2,673	2,598	2,640	2,833	2,510	34	
TRANSPORTATION & EXCHANGE								
38	CORE							
		ALL END USES	130	152	144	142	142	38
39	NONCORE							
		INDUSTRIAL	518	519	533	534	544	39
40		ELECTRIC GENERATION	939	987	990	1025	783	40
41		SUBTOTAL/RETAIL	1,587	1,658	1,666	1,701	1,470	41
43		WHOLESALE/INTERNATIONAL	9	10	8	8	8	43
45	TOTAL TRANSPORTATION AND EXCHANGE		1,596	1,668	1,674	1,709	1,478	45
CURTAILMENT/ALTERNATIVE FUEL BURNS								
48	Residential, Commercial, Industrial	0	0	0	0	0	48	
49	Utility Electric Generation	0	0	0	0	0	49	
50	TOTAL CURTAILMENT ⁽³⁾	0	0	0	0	0	50	

NOTES:

- (1) Electric generation includes SMUD, cogeneration, PG&E-owned electric generation, and deliveries to power plants connected to the PG&E system. It excludes deliveries by other pipelines.
- (2) Includes both PG&E and third party storage
- (3) UEG curtailments include voluntary oil burns due to economic, operational, and inventory reduction reasons as well as involuntary curtailments due to supply shortages and capacity constraints.
- (4) For years 2012 through 2016, Total gas send-out excludes off-system transportation; off system deliveries are subtracted from total supply .

2017 CALIFORNIA GAS REPORT SUPPLEMENT

SOUTHERN CALIFORNIA RECORDED ACTUALS

Southern California Gas Company
City of Long Beach Gas & Oil Department
San Diego Gas & Electric Company

SOUTHERN CALIFORNIA GAS COMPANY
ANNUAL GAS SUPPLY AND SENDOUT - MMCF/DAY
RECORDED YEARS 2012 TO 2016

<u>Line</u>	<u>CAPACITY AVAILABLE</u>	<u>2012</u>	<u>2013</u>	<u>2014</u>	<u>2015</u>	<u>2016</u>
1	California Source Gas					
	<u>Out-of-State Gas</u>					
2	California Offshore -POPCO / PIOC					
3	El Paso Natural Gas Co.					
4	Transwestern Pipeline Co.					
5	Kern / Mojave					
6	PGT / PG&E					
7	Other					
8	Total Out-of-State Gas					
9	TOTAL CAPACITY AVAILABLE					
	<u>GAS SUPPLY TAKEN</u>					
10	California Source Gas	148	153	143	122	89
	<u>Out-of-State Gas</u>					
11	Other Out-of-State	2,728	2,514	2,538	2,397	2,342
12	Total Out-of-State Gas	2,728		2,538	2,397	2,342
13	TOTAL SUPPLY TAKEN	2,876	2,667	2,681	2,519	2,431
14	Net Underground Storage Withdrawal	(42)	106	(63)	40	80
15	TOTAL THROUGHPUT (1)(2)	2,834	2,773	2,618	2,559	2,511
	<u>DELIVERIES BY END-USE</u>					
16	Core Residential	644	646	541	548	557
17	Commercial	216	222	202	207	213
18	Industrial	61	62	58	58	55
19	NGV	29	31	33	35	36
20	Subtotal	950	961	834	848	861
21	Noncore Commercial	60	60	53	52	57
22	Industrial	365	368	379	362	391
23	EOR Steaming	29	35	44	46	39
24	Electric Generation	922	848	863	795	740
25	Subtotal	1,376	1,311	1,339	1,255	1,228
26	Wholesale/International	477	465	410	428	390
27	Co. Use & LUAF	31	36	35	28	31
28	SYSTEM TOTAL-THROUGHPUT (1)(2)	2,834	2,773	2,618	2,559	2,511
	<u>TRANSPORTATION AND EXCHANGE</u>					
29	Core All End Uses	35	45	49	52	56
30	Noncore Commercial/Industrial	425	428	432	414	449
31	EOR Steaming	29	35	44	46	39
32	Electric Generation	922	848	863	795	740
33	Subtotal-Retail	1,411	1,356	1,388	1,307	1,284
34	Wholesale/International	477	465	410	428	390
35	TOTAL TRANSPORTATION & EXCHANGE	1,888	1,821	1,798	1,735	1,674
36	CURTAILMENT (3)					
37	REFUSAL					
38	Total BTU Factor (Dth/Mcf)	1.021	1.0266	1.0300	1.0353	1.0345

NOTES:

- (1) The wholesale volumes only reflect natural gas supplied by SoCalGas; and, do not include supplies from other sources. Refer to the supply source data provided in each utility's report for a complete accounting of their supply sources.
- (2) Deliveries by end-use includes sales, transportation, and exchange volumes and data includes effect of prior period adjustments
- (3) The table does not explicitly show any curtailment numbers for the recorded years because, during some curtailment events, the estimate of the curtailed volume is not available. While the table does not explicitly show any curtailment numbers for the recorded years, the noncore customer usage data implicitly captures the effects of any curtailment events.

CITY OF LONG BEACH - GAS & OIL DEPARTMENT

ANNUAL GAS SUPPLY AND SENDOUT - MMCF/DAY
RECORDED YEARS 2009 THRU 2014

LINE	ACTUAL DELIVERIES BY END-USE		2012	2013	2014	2015	2016	LINE
1	CORE	Residential	13.7	14.2	11.5	11.9	11.9	1
2	CORE/NONCORE	Commercial	5.4	5.9	5.4	5.4	5.8	2
3	CORE/NONCORE	Industrial	3.4	3.4	3.3	3.7	3.9	3
4		Subtotal	22.5	23.6	20.3	20.9	21.6	4
5	NON CORE	Non-EOR Cogeneration	1.6	1.5	0.9	1.2	1.9	5
6		EOR Cogen. & Steaming	-	-	-	-	-	6
7		Electric Utilities	-	-	-	-	-	7
8		Subtotal	1.6	1.5	0.9	1.2	1.9	8
9	WHOLESALE	Residential	-	-	-	-	-	9
10		Com. & Ind., others	-	-	-	-	-	10
12		Subtotal-WHOLESALE	-	-	-	-	-	12
13		Co. Use & LUAF	0.2	0.2	0.4	0.4	0.2	13
14		Subtotal-END USE	24.4	25.4	21.5	22.5	23.7	14
15		Storage Injection	-	-	-	-	-	15
16		SYSTEM TOTAL-THROUGHPUT	24.4	25.4	21.5	22.5	23.7	16
ACTUAL TRANSPORTATION AND EXCHANGE								
17		Residential	N/A	N/A	N/A	N/A	N/A	17
18		Commercial/Industrial	2.7	2.5	2.3	2.3	2.6	18
19		Non-EOR Cogeneration	1.6	1.5	0.8	1.1	1.8	19
20		EOR Cogen. & Steaming	N/A	N/A	N/A	N/A	N/A	20
21		Electric Utilites	N/A	N/A	N/A	N/A	N/A	21
22		Subtotal-RETAIL	4.3	3.9	3.1	3.4	4.3	22
23	WHOLESALE	All End Uses	-	-	-	-	-	23
24		TOTAL TRANSPORTATION & EXCHANGE	4.3	3.9	3.1	3.4	4.3	24
ACTUAL CURTAILMENT								
25		Residential	-	-	-	-	-	25
26		Commercial/Industrial	-	-	-	-	-	26
27		Non-EOR Cogeneration	-	-	-	-	-	27
28		EOR Cogen. & Steaming	-	-	-	-	-	28
29		Electric Utilites	-	-	-	-	-	29
30		Wholesale	-	-	-	-	-	30
31		TOTAL- Curtailment	-	-	-	-	-	31
32	REFUSAL		-	-	-	-	-	32

NOTE: Actual deliveries by end-use includes sales, transportation, and exchange volumes, but excludes actual curtailments.

CITY OF LONG BEACH - GAS & OIL DEPARTMENT

ANNUAL GAS SUPPLY AND SENDOUT - MMCF/DAY
RECORDED YEARS 2012 THRU 2016

LINE	GAS SUPPLY AVAILABLE	2012	2013	2014	2015	2016	LINE
	California Source Gas						
1	Regular Purchases	-	-	-	-	-	1
2	Received for Exchange/Transport	-	-	-	-	-	2
3	Total California Source Gas	-	-	-	-	-	3
4	Purchases from Other Utilities	-	-	-	-	-	4
	Out-of-State Gas						
5	Pacific Interstate Companies	-	-	-	-	-	5
6	Additional Core Supplies	-	-	-	-	-	6
7	Incremental Supplies	-	-	-	-	-	7
8	Out-of-State Transport	-	-	-	-	-	8
9	Total Out-of-State Gas	-	-	-	-	-	9
10	Subtotal	-	-	-	-	-	10
11	Underground Storage Withdrawal	-	-	-	-	-	11
12	GAS SUPPLY AVAILABLE	-	-	-	-	-	12
	GAS SUPPLY TAKEN						
	California Source Gas						
13	Regular Purchases	1.2	1.9	2.4	0.7	0.9	13
14	Received for Exchange/Transport	0	0	0	0	0	14
15	Total California Source Gas	1.2	1.9	2.4	0.7	0.9	15
16	Purchases from Other Utilities	-	-	-	-	-	16
	Out-of-State Gas						
17	Pacific Interstate Companies	-	-	-	-	-	17
18	Additional Core Supplies	-	-	-	-	-	18
19	Incremental Supplies	23.2	23.5	19.2	21.9	22.8	19
20	Out-of-State Transport	-	-	-	-	-	20
21	Total Out-of-State Gas	23.2	23.5	19.2	21.9	22.8	21
22	Subtotal	24.4	25.4	21.5	22.5	23.7	22
23	Underground Storage Withdrawal	-	-	-	-	-	23
24	TOTAL Gas Supply Taken & Transported	24.4	25.4	21.5	22.5	23.7	24

SAN DIEGO GAS & ELECTRIC COMPANY

ANNUAL GAS SUPPLY AND SENDOUT (MMCF/DAY)

RECORDED YEARS 2012-2016

RECORDED YEARS 2012-2016

LINE	Actual Deliveries by End-Use		2012	2013	2014	2015	2016
1	CORE	Residential	83	85	68	67	71
2		Commercial	50	52	49	49	51
3		Industrial	0	0	0	0	-
4		<i>Subtotal - CORE</i>	134	137	117	116	122
5	NONCORE	Commercial	0	0	0	0	-
6		Industrial	13	12	11	11	12
7		Non-EOR Cogen/EG	100	70	72	74	60
8		Electric Utilities	134	147	121	126	99
9		<i>Subtotal - NONCORE</i>	247	229	204	211	171
10	WHOLESALE	All End Uses	0	0	0	0	-
11		<i>Subtotal - Co Use & LUAF</i>	4	5	2	9	(3)
12	SYSTEM TOTAL THROUGHPUT		384	371	323	336	290
Actual Transport & Exchange							
13	CORE	Residential	0	1	1	1	1
14		Commercial	11	12	11	12	13
15	NONCORE	Industrial	13	12	11	11	12
16		Non-EOR Cogen/EG	100	70	72	74	60
17		Electric Utilities	134	147	121	126	99
18		<i>Subtotal - RETAIL</i>	258	242	216	224	185
19	WHOLESALE	All End Uses	0	0	0	0	-
20	TOTAL TRANSPORT & EXCHANGE		258	242	216	224	185
Storage							
21		<i>Storage Injection</i>	0	0	0	0	-
22		<i>Storage Withdrawal</i>	0	0	0	0	-
Actual Curtailment							
23		Residential	0	0	0	0	-
24		Com/Indl & Cogen	0	0	0	0	-
25		Electric Generation	0	0	0	0	-
26	TOTAL CURTAILMENT		0	0	0	0	-
27	REFUSAL		0	0	0	0	-
ACTUAL DELIVERIES BY END-USE includes sales and transportation volumes							
MMbtu/Mcf:			1.017	1.024	1.035	1.040	1.036

NB: This file and MMCFD Supplies are used in the odd year reports (see P 17-18 of CGR)

SAN DIEGO GAS & ELECTRIC COMPANY
ANNUAL GAS SUPPLY TAKEN (MMCF/DAY)
RECORDED YEARS 2012-2016

LINE	2012	2013	2014	2015	2016
CAPACITY AVAILABLE					
1	California Sources				
	Out of State gas				
2	California Offshore (POPCO/PIOC)				
3	El Paso Natural Gas Company				
4	Transwestern Pipeline company				
5	Kern River/Mojave Pipeline Company				
6	TransCanada GTN/PG&E				
7	Other				
8	TOTAL Output of State				
9	Underground storage withdrawal				
10	TOTAL Gas Supply available				
Gas Supply Taken					
	2012	2013	2014	2015	2016
California Source Gas					
11	0	0	0	0	0
12	0	0	0	0	0
13	<u>0</u>	<u>0</u>	<u>0</u>	<u>0</u>	<u>0</u>
Total California Source Gas					
14	0	0	0	0	0
Purchases from Other Utilities					
Out-of-State Gas					
15	0	0	0	0	0
16	0	0	0	0	0
17	126	129	107	112	105
18	<u>258</u>	<u>242</u>	<u>216</u>	<u>224</u>	<u>185</u>
19	384	371	323	336	290
20	384	371	323	336	290
	(MMCFD)				
			0	0	0

2017 CALIFORNIA GAS REPORT SUPPLEMENT

CALIFORNIA NATURAL GAS STORAGE OVERVIEW

CALIFORNIA NATURAL GAS STORAGE CAPACITIES

Northern California		Inventory (Bcf) ⁽¹⁾	Injection (MMcf/d) ⁽²⁾	Withdrawal (MMcf/d) ⁽⁴⁾	Cite ⁽³⁾
Independent Storage Providers					
	Lodi Gas Storage	30	550	750	1
	Wild Goose Storage	50	650	1,200	2
	Gill Ranch	20	650	650	3
	Central Valley	11	300	300	4
	Pacific Gas & Electric Company Utility Storage	96	287	1,811	5
Northern California Total					
Northern California Total		207	2,437	4,711	
Southern California					
	Southern California Gas Company Utility Storage	138.1	770/490 *	1,812/3,175	6, 7
California Total					
California Total		345.1	3,207/2,927	6,523/7,886	

* The injection capacity for the summer and winter has been reduced by 145 MMcf/d as a result of the Aliso Canyon Turbine Replacement Project not yet being in service.

(1) <https://www.rockpointgs.com/lodi.html>

(2) <https://www.rockpointgs.com/wild-goose.html>

(3) http://www.cpuc.ca.gov/environment/info/mha/gillranch/pea/05_section_3_project_description.pdf

(4) <http://pivotalenergydev.com/commercial-operations/cvgs-operations>

(5) D.16-06-05

(6) A.11-11-002

(7) Summer # / Winter # (MMcf/d)

2017 CALIFORNIA GAS REPORT SUPPLEMENT

RESPONDENTS

RESPONDENTS

The following utilities have been designated by the California Public Utilities Commission as respondents in the preparation of the *2017 California Gas Report*.

- Southern California Gas Company
- Pacific Gas & Electric Company
- San Diego Gas & Electric Company
- City of Long Beach Gas and Oil Department
- Southwest Gas Corporation

A statewide committee has been formed by the respondents and cooperating utilities to prepare this report. The following individuals served on this committee:

Working Committee:

- Rose-Marie Payan – SoCalGas/SDG&E
- Sharim Chaudhury – SoCalGas/SDG&E
- Scott Wilder – SoCalGas/SDG&E
- Tessa Carlberg – PG&E
- Todd Peterson – PG&E
- Gary Lenart – SoCalGas
- Nathan Fung--SoCalGas
- Timothy Loon-- SoCalGas
- Oliver Harris – SoCalGas
- Michelle Clay-Ijomah – SDG&E
- Kathleen Donaldson – SDG&E
- Nasim Ahmed – SoCalGas
- Nancy Thom--SoCalGas

Observers:

- : fUbn'7\Yb[– CPUC Energy Division
- Anthony Dixon – California Energy Commission

RESERVE YOUR SUBSCRIPTION

2018 CALIFORNIA GAS REPORT

Pacific Gas and Electric Company

2018 CGR Reservation Form

C/O Tessa Carlberg

77 Beale Street

Mail code B10B

San Francisco, CA 94105

or

Fax: (415) 973-6272

Email: Tessa Carlberg at

T3M3@pge.com

- Send me a 2018 California Gas Report
- New subscriber
- Change of address

Company Name: _____

C/O: _____

Address: _____

City: _____ State: _____ Zip: _____

Phone: (_____) _____ Fax: (_____) _____

Also, please visit our website at: www.pge.com

RESERVE YOUR SUBSCRIPTION

2018 CALIFORNIA GAS REPORT

Southern California Gas Company

2018 CGR Reservation Form

C/O Sharim Chaudhury

555 West Fifth Street

Mail Location GT14D6

Los Angeles, CA 90013

or

Fax: (213) 244-4957

Email: Sharim Chaudhury at

IChaudhury@semprautilities.com

- Send me a 2018 California Gas Report
- New subscriber
- Change of address

Company Name: _____

C/O: _____

Address: _____

City: _____ State: _____ Zip: _____

Phone: (_____) _____ Fax: (_____) _____

Also, please visit our website at: www.socalgas.com
www.sdge.com

