

CLIMATE ADAPTATION



SoCalGas will conduct a **vulnerability assessment** that examines the impacts of climate hazards on its infrastructure, operations and services.



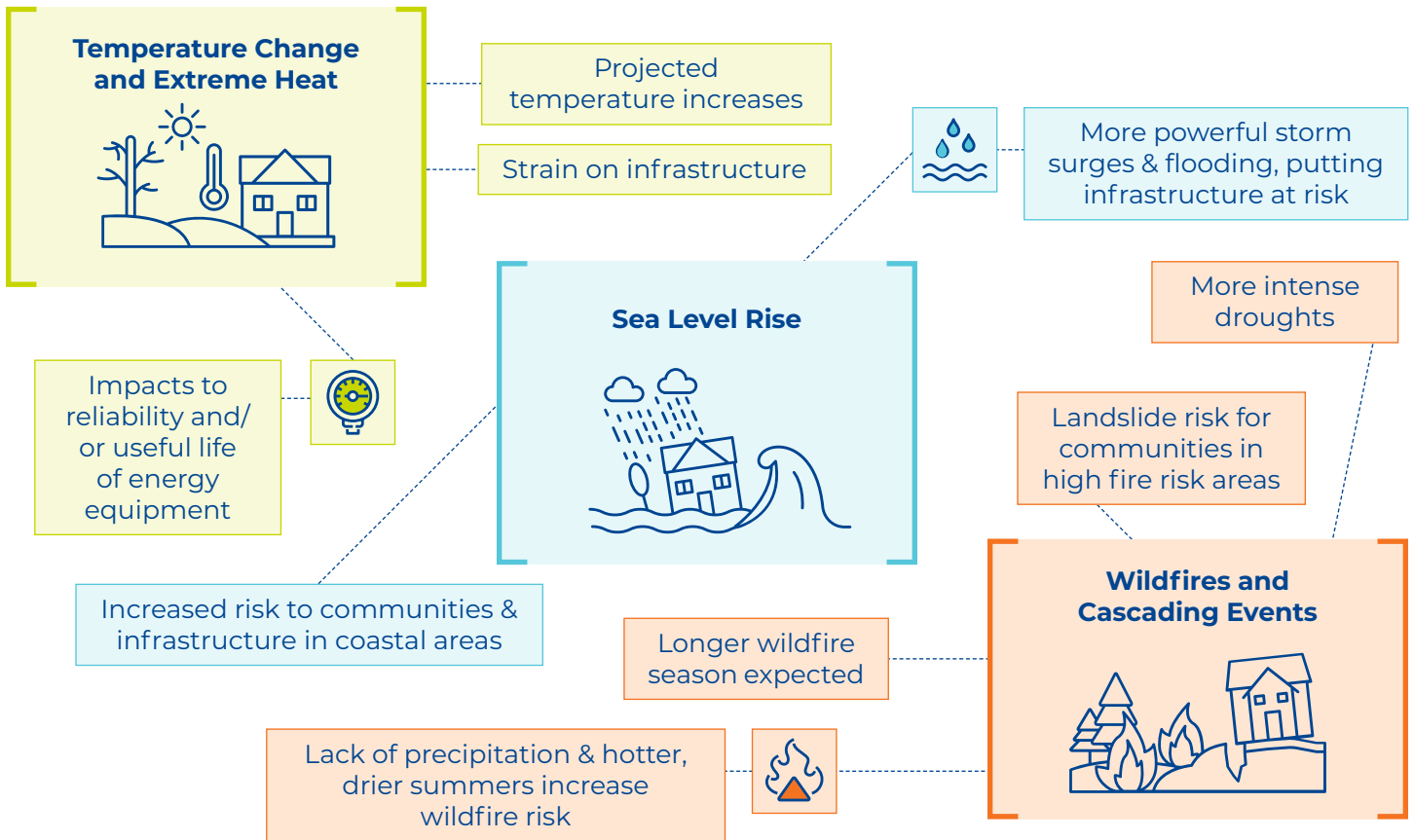
WHAT IS A VULNERABILITY ASSESSMENT?

The vulnerability assessment examines how current infrastructure may be impacted or services disrupted due to climate change. It also helps SoCalGas plan the infrastructure needed for a climate-resilient and sustainable energy future.

As we prepare for this assessment, we invite you to help us shape an equitable and climate-resilient plan for all Californians.

Together, we can identify...

- What climate impacts can we expect?
- How will climate impacts affect SoCalGas?
- How these changes will impact our communities?
- How SoCalGas can address these issues?



Your input is critical!

Help us understand vulnerabilities across our system and identify the steps needed to build a more climate resilient future. To learn more, provide comments, or look for upcoming engagement opportunities, please scan the QR code or visit:

www.socalgas.com/climate-adaptation-at-socalgas

